

US Government - Thrift Savings Plan (TSP)
TSP Daily Share Prices & Trend Lines
21 Business Days (~ 1 month)
<https://www.tsp.gov/investmentfunds/shareprice/sharePriceHistory.shtm>
 Nov 2, 2023 - to - Dec 1, 2023

Date	L Income	L 2025	L 2030	L 2035	L 2040	L 2045	L 2050	L 2055	L 2060	L 2065	G Fund	F Fund	C Fund	S Fund	I Fund	Comments
Thu, Nov 2, 2023	23.9846	12.1107	41.9749	12.4932	46.8949	12.7417	27.7299	13.5068	13.5048	13.5027	17.8255	18.0142	67.1201	64.6338	36.1882	
Fri, Nov 3, 2023	24.0695	12.1680	42.2992	12.5992	47.3266	12.8672	28.0194	13.6690	13.6671	13.6650	17.8279	18.1398	67.7535	66.2469	36.5816	
Mon, Nov 6, 2023	24.0624	12.1621	42.2596	12.5855	47.2687	12.8497	27.9789	13.6494	13.6475	13.6454	17.8353	18.0589	67.8745	65.4909	36.5044	
Tue, Nov 7, 2023	24.0689	12.1649	42.2640	12.5869	47.2736	12.8510	27.9807	13.6446	13.6427	13.6406	17.8377	18.1480	68.0685	65.7768	36.2489	
Wed, Nov 8, 2023	24.0714	12.1653	42.2560	12.5842	47.2611	12.8471	27.9706	13.6345	13.6326	13.6305	17.8401	18.2077	68.1398	65.3721	36.2022	
Thu, Nov 9, 2023	24.0325	12.1391	42.1096	12.5359	47.0638	12.7895	27.8382	13.5651	13.5632	13.5610	17.8425	18.0669	67.6016	64.4925	36.2846	
Fri, Nov 10, 2023	24.0980	12.1840	42.3715	12.6212	47.4117	12.8905	28.0717	13.7013	13.6993	13.6972	17.8449	18.0891	68.6674	65.2391	36.3361	
Mon, Nov 13, 2023	24.1068	12.1883	42.3846	12.6250	47.4255	12.8942	28.0796	13.7048	13.7028	13.7007	17.8523	18.0954	68.6141	65.2409	36.4041	
Tue, Nov 14, 2023	24.2769	12.3045	43.0547	12.8445	48.3215	13.1551	28.6828	14.0474	14.0455	14.0434	17.8547	18.3099	69.9367	68.1010	37.3679	
Wed, Nov 15, 2023	24.2799	12.3073	43.0775	12.8516	48.3508	13.1635	28.7034	14.0660	14.0641	14.0619	17.8572	18.2064	70.0608	68.3315	37.3664	
Thu, Nov 16, 2023	24.2813	12.3063	43.0573	12.8448	48.3214	13.1545	28.6808	14.0458	14.0439	14.0418	17.8596	18.3065	70.1602	67.5634	37.2970	
Fri, Nov 17, 2023	24.3253	12.3364	43.2315	12.9018	48.5543	13.2224	28.8382	14.1370	14.1352	14.1331	17.8620	18.3358	70.2515	68.2675	37.7726	
Mon, Nov 20, 2023	24.3755	12.3694	43.4143	12.9612	48.7953	13.2922	28.9992	14.2296	14.2278	14.2257	17.8694	18.3682	70.7779	68.7254	37.9722	
Tue, Nov 21, 2023	24.3583	12.3564	43.3307	12.9336	48.6815	13.2588	28.9210	14.1819	14.1801	14.1780	17.8718	18.3841	70.6360	68.2231	37.8250	
Wed, Nov 22, 2023	24.3817	12.3722	43.4211	12.9631	48.8017	13.2937	29.0020	14.2293	14.2274	14.2253	17.8743	18.3923	70.9262	68.6717	37.8638	
Fri, Nov 24, 2023	24.4048	12.3880	43.5144	12.9932	48.9246	13.3294	29.0852	14.2822	14.2803	14.2782	17.8792	18.3319	70.9698	69.0654	38.1526	
Mon, Nov 27, 2023	24.4062	12.3858	43.4791	12.9813	48.8736	13.3141	29.0479	14.2527	14.2508	14.2487	17.8866	18.4329	70.8323	68.9552	38.0537	
Tue, Nov 28, 2023	24.4176	12.3923	43.5075	12.9906	48.9102	13.3246	29.0712	14.2617	14.2599	14.2579	17.8890	18.5010	70.9014	68.8451	38.0913	
Wed, Nov 29, 2023	24.4347	12.4026	43.5559	13.0065	48.9749	13.3435	29.1140	14.2803	14.2786	14.2766	17.8914	18.6015	70.8461	69.4755	38.1380	
Thu, Nov 30, 2023	24.4482	12.4124	43.6175	13.0264	49.0562	13.3671	29.1694	14.3175	14.3157	14.3137	17.8939	18.5331	71.1354	69.8017	38.1279	
Fri, Dec 1, 2023	24.5204	12.4608	43.8906	13.1162	49.4234	13.4744	29.4173	14.4541	14.4524	14.4504	17.8963	18.6929	71.5592	71.5764	38.4578	
Date	L Income	L 2025	L 2030	L 2035	L 2040	L 2045	L 2050	L 2055	L 2060	L 2065	G Fund	F Fund	C Fund	S Fund	I Fund	Comments
4 Biz Day Gain/Loss	0.1028	0.0685	0.3831	0.1256	0.5132	0.1498	0.3461	0.1924	0.1925	0.1925	0.0073	0.1919	0.6578	2.7313	0.3665	4 Biz Days
5 Biz Day Gain/Loss	0.1142	0.0750	0.4115	0.1349	0.5498	0.1603	0.3694	0.2014	0.2016	0.2017	0.0097	0.2600	0.7269	2.6212	0.4041	1 Week
10 Biz Day Gain/Loss	0.1951	0.1244	0.6591	0.2144	0.8691	0.2520	0.5791	0.3171	0.3172	0.3173	0.0343	0.3571	1.3077	3.3089	0.6852	2 Weeks
15 Biz Day Gain/Loss	0.4224	0.2768	1.5191	0.4950	2.0117	0.5839	1.3456	0.7528	0.7531	0.7532	0.0514	0.6038	2.8918	6.3373	2.1217	3 Weeks
21 Biz Day Gain/Loss	0.5358	0.3501	1.9157	0.6230	2.5285	0.7327	1.6874	0.9473	0.9476	0.9477	0.0708	0.6787	4.4391	6.9426	2.2696	1 Month

21 Business Days (~ 1 month)

	L Income	L 2025	L 2030	L 2035	L 2040	L 2045	L 2050	L 2055	L 2060	L 2065	G Fund	F Fund	C Fund	S Fund	I Fund	Comments
Min	23.9846	12.1107	41.9749	12.4932	46.8949	12.7417	27.7299	13.5068	13.5048	13.5027	17.8255	18.0142	67.1201	64.4925	36.1882	
Max	24.5204	12.4608	43.8906	13.1162	49.4234	13.4744	29.4173	14.4541	14.4524	14.4504	17.8963	18.6929	71.5592	71.5764	38.4578	
Avg	24.2574	12.2894	42.9558	12.8117	48.1864	13.1154	28.5905	13.9934	13.9915	13.9894	17.8615	18.2960	69.6587	67.5284	37.2970	
Std Deviation	0.169	0.111	0.611	0.199	0.807	0.234	0.539	0.305	0.305	0.305	0.022	0.191	1.430	1.972	0.818	Less Is Better (More Stable)
Min & Max	L min =	12.1107		L max =	49.4234						I min =	17.8255		I max =	71.5764	

Date	L Income	L 2025	L 2030	L 2035	L 2040	L 2045	L 2050	L 2055	L 2060	L 2065	G Fund	F Fund	C Fund	S Fund	I Fund	Comments
Thu, Nov 2, 23	10,000.00	10,000.00	10,000.00	10,000.00	10,000.00	10,000.00	10,000.00	10,000.00	10,000.00	10,000.00	10,000.00	10,000.00	10,000.00	10,000.00	10,000.00	
No. of Shares	416.934	825.716	238.238	800.435	213.243	784.825	360.622	740.368	740.477	740.593	560.994	555.118	148.987	154.718	276.333	
Fri, Dec 1, 23	10,223.39	10,289.08	10,456.39	10,498.67	10,539.18	10,575.04	10,608.51	10,701.35	10,701.68	10,701.86	10,039.72	10,376.76	10,661.37	11,074.14	10,627.17	
\$ Gain/Loss	\$223.39	\$289.08	\$456.39	\$498.67	\$539.18	\$575.04	\$608.51	\$701.35	\$701.68	\$701.86	\$39.72	\$376.76	\$661.37	\$1,074.14	\$627.17	
% Gain/Loss	2.23	2.89	4.56	4.99	5.39	5.75	6.09	7.01	7.02	7.02	0.40	3.77	6.61	10.74	6.27	GRADING: Green: A & B (top 16%) Yellow: C+ (upper middle 34%) Orange: C- (lower middle 34%) Red: D & F (bottom 16%)
D/F	D/F	D/F	C-	C-	C+	C+	C+	C+	C+	C+	D/F	C-	C+	A/B	C+	Normal (Bell) Curve: http://evolutionaryparenting.com/wp-content/uploads/2013
% Gain/Loss	min =	0.40		max =	10.74						avg =	5.38		std dev =	2.37	
											avg - std dev =	3.02		avg + std dev =	7.75	

Larry's Distribution

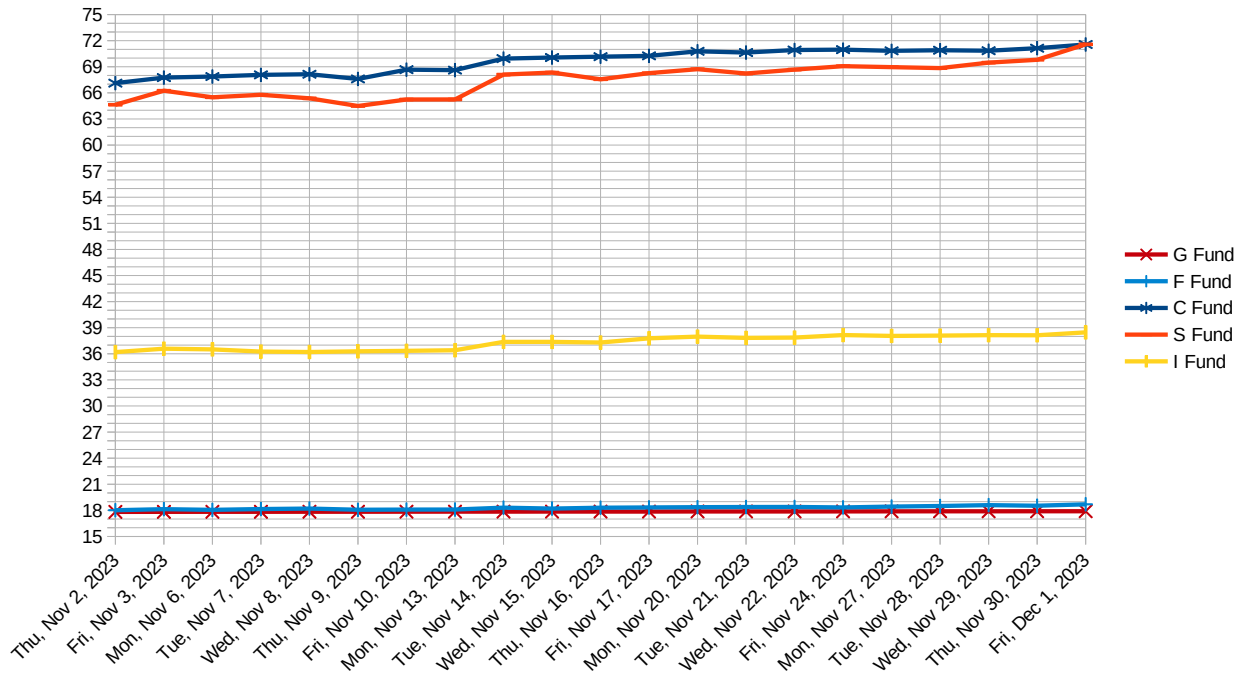
1% 1% 1% 1% 1%

95%

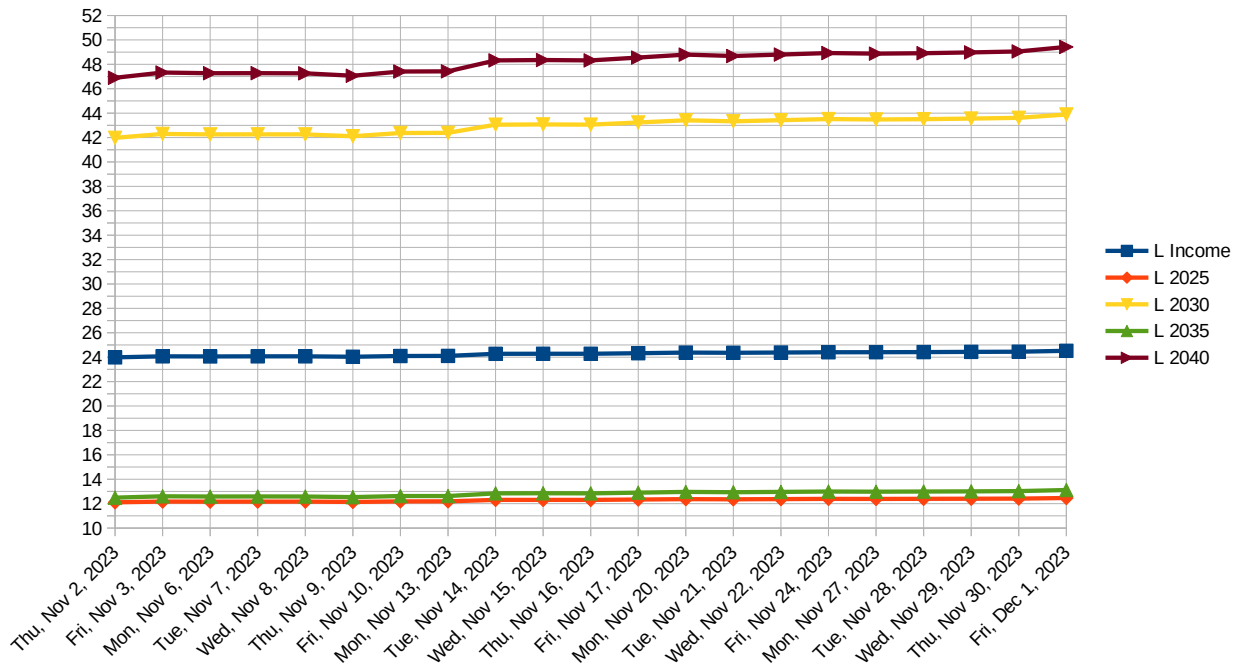
100%

Min & Max	L min =	12.1107	L max =	49.4234	I min =	17.8255	I max =	71.5764
-----------	---------	---------	---------	---------	---------	---------	---------	---------

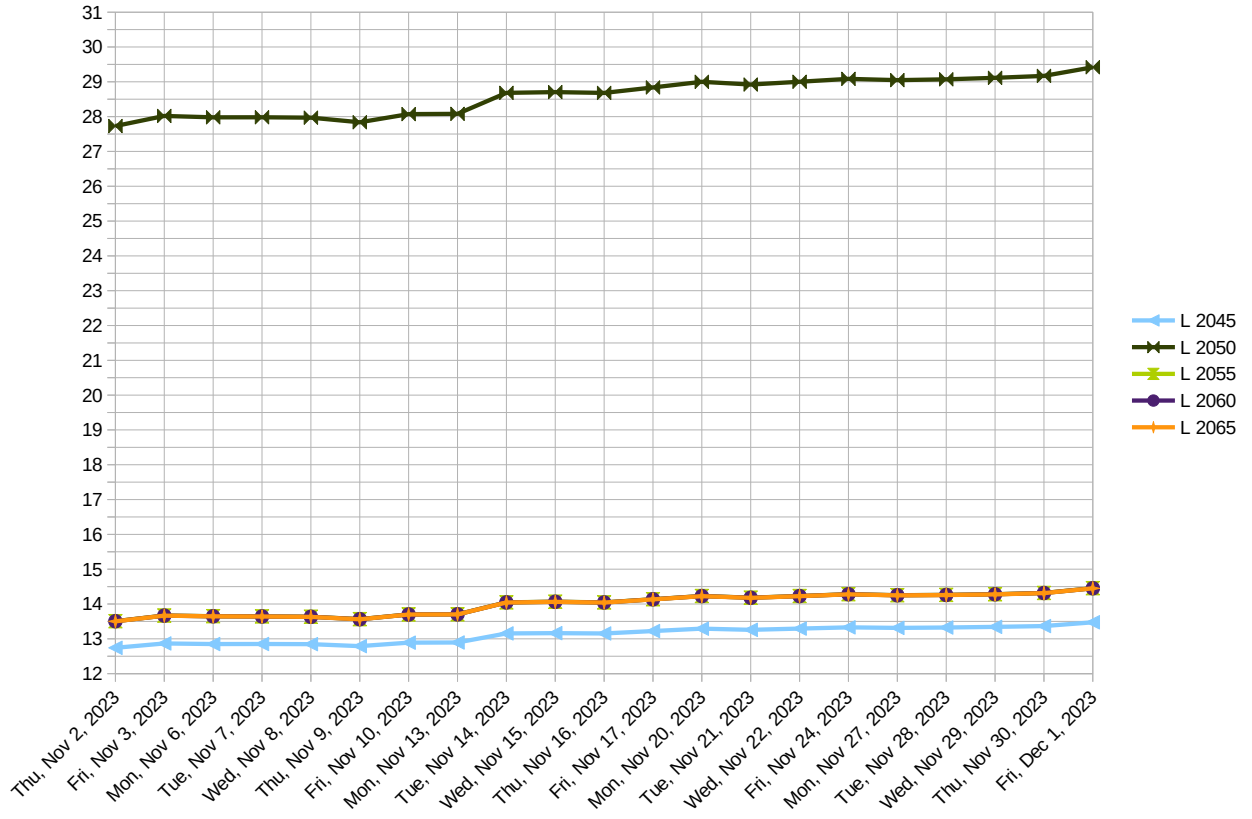
21 Business Days (~ 1 month)



21 Business Days (~ 1 month)



21 Business Days (~ 1 month)



US Government - Thrift Savings Plan (TSP)

TSP Daily Share Prices & Trends

250 Business Days (~ 12 months)

<https://www.tsp.gov/investmentfunds/shareprice/sharePriceHistory.shtml>

Dec 2, 2022 - to - Dec 1, 2023

Date	L Income	L 2025	L 2030	L 2035	L 2040	L 2045	L 2050	L 2055	L 2060	L 2065	L 2065	G Fund	F Fund	C Fund	S Fund	I Fund	Comments
Fri, Dec 2, 2022	23.0668	11.6321	40.2062	11.9673	44.9092	12.2026	26.5465	12.8579	12.8567	12.8552	17.1833	18.5728	62.4016	66.0443	64.7731		
Mon, Dec 5, 2022	22.9812	11.5456	39.7541	11.8189	44.3024	12.0257	26.1370	12.6256	12.6243	12.6228	17.1888	18.4324	61.2851	64.0984	34.2837		
Tue, Dec 6, 2022	22.9628	11.4987	39.5015	11.7364	43.9643	11.9273	25.9081	12.4870	12.4858	12.4843	17.1906	18.5002	60.4043	63.0687	34.1327		
Wed, Dec 7, 2022	22.9309	11.4982	39.4871	11.7318	43.9347	11.9212	25.8922	12.4682	12.4671	12.4657	17.1924	18.6545	60.2930	62.9026	34.1081		
Thu, Dec 8, 2022	22.9665	11.5278	39.6424	11.7822	44.1495	11.9809	26.0307	12.5520	12.5508	12.5494	17.1942	18.6026	60.7556	63.4879	34.2620		
Fri, Dec 9, 2022	22.9361	11.5043	39.5251	11.7437	43.9928	11.9353	25.9260	12.4975	12.4962	12.4948	17.1961	18.4886	60.3110	62.8607	34.3379		
Mon, Dec 12, 2022	22.9958	11.5510	39.7629	11.8208	44.3058	12.0260	26.1355	12.6193	12.6181	12.6166	17.2016	18.4880	61.1730	63.7892	34.3886		
Tue, Dec 13, 2022	23.0643	11.6039	40.0286	11.9075	44.6582	12.1280	26.3703	12.7487	12.7475	12.7460	17.2033	18.6154	61.6206	64.3391	34.9193		
Wed, Dec 14, 2022	23.0489	11.5896	39.9487	11.8814	44.5511	12.0969	26.2976	12.7029	12.7017	12.7003	17.2050	18.6679	61.2594	64.0441	34.9166	Wed, Dec 14, 2022 Federal Reserve raised the interest rate 0.50%	
Thu, Dec 15, 2022	22.9092	11.4738	39.3393	11.6824	43.7384	11.8607	25.7502	12.3815	12.3803	12.3790	17.2068	18.6803	59.7361	62.3336	34.0056		
Fri, Dec 16, 2022	22.8518	11.4269	39.0949	11.6025	43.4125	11.7660	25.5313	12.2560	12.2548	12.2535	17.2085	18.6354	59.0738	61.7387	33.6905		
Mon, Dec 19, 2022	22.8070	11.3901	38.9039	11.5397	43.1558	11.6911	25.3584	12.1612	12.1601	12.1586	17.2139	18.5246	58.5453	60.7610	33.5960		
Tue, Dec 20, 2022	22.8182	11.4009	38.9658	11.5597	43.2379	11.7150	25.4147	12.2007	12.1995	12.1980	17.2157	18.4059	58.6079	61.0676	33.7920		
Wed, Dec 21, 2022	22.8965	11.4635	39.2864	11.6639	43.6616	11.8377	25.6979	12.3631	12.3618	12.3603	17.2174	18.4397	59.4866	62.0709	34.1285		
Thu, Dec 22, 2022	22.8277	11.4070	38.9924	11.5681	43.2714	11.7246	25.4364	12.2119	12.2107	12.2092	17.2191	18.4230	58.6284	61.1795	33.8405		
Fri, Dec 23, 2022	22.8496	11.4254	39.0902	11.5997	43.4003	11.7618	25.5229	12.2659	12.2646	12.2631	17.2208	18.3588	58.9717	61.3898	33.9379		
Tue, Dec 27, 2022	22.8340	11.4119	39.0189	11.5759	43.3022	11.7330	25.4567	12.2332	12.2319	12.2303	17.2281	18.2486	58.7373	60.9983	33.9634		
Wed, Dec 28, 2022	22.7722	11.3613	38.7567	11.4903	42.9538	11.6319	25.2230	12.0991	12.0978	12.0962	17.2299	18.2129	58.0309	60.1184	33.6813		
Thu, Dec 29, 2022	22.8745	11.4430	39.1746	11.6264	43.5073	11.7924	25.5935	12.3106	12.3092	12.3077	17.2316	18.2819	59.0510	61.6545	34.1698		
Fri, Dec 30, 2022	22.8607	11.4237	39.0754	11.5938	43.3747	11.7539	25.5049	12.2631	12.2618	12.2602	17.2352	18.2074	58.9043	61.5305	33.9422		
Tue, Jan 3, 2023	22.8557	11.4238	39.0628	11.5894	43.3547	11.7477	25.4893	12.2479	12.2466	12.2450	17.2407	18.3031	58.6704	61.1436	34.1009		
Wed, Jan 4, 2023	22.9224	11.4740	39.3225	11.6741	43.6986	11.8475	25.7190	12.3760	12.3747	12.3732	17.2425	18.3977	59.1156	62.0623	34.5438		
Thu, Jan 5, 2023	22.8607	11.4252	39.0603	11.5886	43.3501	11.7463	25.4852	12.2407	12.2395	12.2379	17.2444	18.3808	58.4370	61.2283	34.2187		
Fri, Jan 6, 2023	23.0043	11.5339	39.6266	11.7731	44.0996	11.9635	25.9853	12.5205	12.5193	12.5178	17.2463	18.5763	59.7718	62.5154	35.0441		
Mon, Jan 9, 2023	23.0314	11.5521	39.7134	11.8012	44.2125	11.9961	26.0597	12.5600	12.5588	12.5574	17.2520	18.6338	59.7362	62.8115	35.3242		
Tue, Jan 10, 2023	23.0574	11.5733	39.8310	11.8393	44.3685	12.0414	26.1654	12.6261	12.6249	12.6234	17.2539	18.5559	60.1532	63.5930	35.3280		
Wed, Jan 11, 2023	23.1289	11.6271	40.1102	11.9304	44.7368	12.1488	26.4127	12.7638	12.7626	12.7612	17.2557	18.6666	60.9279	64.5760	35.5535		
Thu, Jan 12, 2023	23.1890	11.6716	40.3378	12.0048	45.0412	12.2368	26.6152	12.8740	12.8728	12.8714	17.2576	18.8029	61.1434	65.4094	36.0676		
Fri, Jan 13, 2023	23.2152	11.6926	40.4536	12.0424	45.1947	12.2814	26.7190	12.9383	12.9371	12.9357	17.2595	18.7406	61.3899	65.8056	36.2888		
Tue, Jan 17, 2023	23.2219	11.6956	40.4619	12.0446	45.2024	12.2833	26.7232	12.9414	12.9402	12.9388	17.2671	18.7182	61.2654	65.8848	36.4033		
Wed, Jan 18, 2023	23.1775	11.6567	40.2363	11.9711	44.9004	12.1955	26.5176	12.8098	12.8086	12.8073	17.2690	18.8993	60.3111	64.9470	36.3616		
Thu, Jan 19, 2023	23.1352	11.6232	40.0561	11.9120	44.6589	12.1250	26.3545	12.7166	12.7155	12.7141	17.2709	18.8541	59.8582	64.1668	36.1722		
Fri, Jan 20, 2023	23.2211	11.6919	40.4304	12.0339	45.1569	12.2697	26.6904	12.9181	12.9169	12.9155	17.2727	18.7669	60.9921	65.5491	36.5188		
Mon, Jan 23, 2023	23.2773	11.7350	40.6588	12.1080	45.4586	12.3572	26.8930	13.0386	13.0373	13.0359	17.2784	18.7239	61.7172	66.6060	36.6308		
Tue, Jan 24, 2023	23.2827	11.7370	40.6614	12.1098	45.4604	12.3575	26.8926	13.0331	13.0319	13.0305	17.2803	18.8066	61.6741	66.2775	36.6958		
Wed, Jan 25, 2023	23.2968	11.7470	40.7113	12.1251	45.5262	12.3766	26.9364	13.0569	13.0557	13.0543	17.2822	18.8362	61.6635	66.3900	36.8717		
Thu, Jan 26, 2023	23.3385	11.7801	40.8907	12.1835	45.7646	12.4458	27.0971	13.1536	13.1524	13.1510	17.2841	18.7937	62.3466	67.0875	36.9121		
Fri, Jan 27, 2023	23.3499	11.7887	40.9362	12.1983	45.8251	12.4635	27.1382	13.1782	13.1770	13.1756	17.2859	18.7842	62.5031	67.6445	36.8512		
Mon, Jan 30, 2023	23.2898	11.7399	40.6679	12.1100	45.4636	12.3580	26.8934	13.0371	13.0358	13.0344	17.2917	18.7300	61.6884	66.6023	36.6336		
Tue, Jan 31, 2023	23.3661	11.7985	40.9794	12.2120	45.8799	12.4792	27.1741	13.1978	13.1966	13.1952	17.2935	18.7991	62.6030	68.1902	36.8039		
Wed, Feb 1, 2023	23.4386	11.8531	41.2639	12.3051	46.2591	12.5896	27.4288	13.3394	13.3382	13.3368	17.2954	18.9280	63.2578	69.4009	37.1139	Wed, Feb 1, 2023 Federal Reserve raised the interest rate 0.25%	
Thu, Feb 2, 2023	23.5046	11.9047	41.5410	12.3956	46.6293	12.6974	27.6787	13.4855	13.4843	13.4829	17.2971	18.9411	64.1910	70.8659	37.1723		
Fri, Feb 3, 2023	23.4339	11.8505	41.2549	12.3017	46.2456	12.5856	27.4205	13.3425	13.3413	13.3398	17.2988	18.7903	63.5291	69.9542	36.7896		
Mon, Feb 6, 2023	23.3800	11.8078	41.0241	12.2255	45.9332	12.4942	27.2088	13.2248	13.2235	13.2220	17.3040	18.6657	63.1439	69.0927	36.3636		
Tue, Feb 7, 2023	23.4406	11.8558	41.2848	12.3105	46.2809	12.5952	27.4434	13.3646	13.3633	13.3618	17.3057	18.6361	63.9582	69.7996	36.6418		
Wed, Feb 8, 2023	23.3944	11.8179	41.0745	12.2417	45.9987	12.5130	27.2521	13.2497	13.2484	13.2469	17.3074	18.6710	63.2515	68.9518	36.5007		
Thu, Feb 9, 2023	23.3619	11.7926	40.9393	12.1972	45.8165	12.4597	27.1288	13.1812	13.1799	13.1783	17.3091	18.6010	62.7026	67.9793	36.6237		
Fri, Feb 10, 2023	23.3500	11.7839	40.8954	12.1825	45.7565	12.4421	27.0883	13.1621	13.1608	13.1592	17.3108	18.5202	62.8525	67.8085	36.3856		
Mon, Feb 13, 2023	23.4188	11.8357	41.1668	12.2709	46.1162	12.5465	27.3294	13.3007	13.2993	13.2978	17.3160	18.5665	63.5815	68.6076	36.7024		
Tue, Feb 14, 2023	23.4212	11.8382	41.1836	12.2763	46.1386	12.5530	27.3454	13.3141	13.3127	13.3111	17.3177	18.5002	63.5717	68.9504	36.7447		
Wed, Feb 15, 2023	23.4304	11.8458	41.2257	12.2901	46.1957	12.5700	27.3853	13.3399	13.3385	13.3369	17.3194	18.4625	63.7643	69.9996	36.5624		
Thu, Feb 16, 2023	23.3733	11.8011	40.9860	12.2115	45.8747	12.4765	27.1691	13.2166	13.2152	13.2135	17.3211	18.3932	62.8906	69.1651	36.4957		
Fri, Feb 17, 2023	23.3684	11.7959	40.9522	12.2004	45.8283	12.4629	27.1368	13.1949	13.1935	13.1919	17.3228</						

Mon, Mar 20, 2023	23.2062	11.6407	40.0180	11.8905	44.5436	12.0844	26.2495	12.6524	12.6512	12.6497	17.3808	18.6769	60.8596	62.3656	35.1497	
Tue, Mar 21, 2023	23.2846	11.7028	40.3536	11.9998	44.9892	12.2138	26.5495	12.8307	12.8294	12.8278	17.3828	18.6152	61.6538	63.7177	35.6055	
Wed, Mar 22, 2023	23.2328	11.6578	40.0957	11.9157	44.6439	12.1132	26.3143	12.6820	12.6808	12.6794	17.3848	18.8031	60.6434	62.0341	35.6406	Wed, Mar 22, 2023 Federal Reserve raised the interest rate 0.25%
Thu, Mar 23, 2023	23.2517	11.6710	40.1604	11.9367	44.7283	12.1374	26.3695	12.7110	12.7098	12.7084	17.3867	18.8547	60.8290	61.8586	35.7554	
Fri, Mar 24, 2023	23.2555	11.6731	40.1682	11.9391	44.7374	12.1399	26.3750	12.7133	12.7121	12.7107	17.3887	18.8663	61.1729	62.1188	35.4197	
Mon, Mar 27, 2023	23.2750	11.6896	40.2627	11.9693	44.8614	12.1759	26.4597	12.7729	12.7717	12.7702	17.3946	18.6854	61.2737	62.6866	35.6894	
Tue, Mar 28, 2023	23.2798	11.6931	40.2815	11.9753	44.8857	12.1829	26.4761	12.7841	12.7828	12.7813	17.3966	18.6560	61.1789	62.6848	35.8596	
Wed, Mar 29, 2023	23.3559	11.7524	40.5983	12.0785	45.3060	12.3049	26.7582	12.9487	12.9474	12.9459	17.3985	18.6574	62.0498	63.6151	36.2361	
Thu, Mar 30, 2023	23.4055	11.7901	40.7963	12.1429	45.5680	12.3807	26.9332	13.0487	13.0475	13.0459	17.4005	18.6927	62.4126	63.7964	36.6939	
Fri, Mar 31, 2023	23.4821	11.8485	41.1032	12.2432	45.9764	12.4994	27.2073	13.2041	13.2028	13.2013	17.4025	18.7793	63.3162	65.1315	36.8714	
Mon, Apr 3, 2023	23.5149	11.8702	41.2093	12.2773	46.1137	12.5389	27.2972	13.2512	13.2500	13.2485	17.4084	18.8608	63.5507	64.9569	37.0917	
Tue, Apr 4, 2023	23.4987	11.8559	41.1200	12.2480	45.9925	12.5033	27.2134	13.1967	13.1955	13.1941	17.4101	18.9429	63.1879	63.9885	37.1779	
Wed, Apr 5, 2023	23.4752	11.8366	41.0049	12.2103	45.8367	12.4577	27.1065	13.1305	13.1293	13.1279	17.4118	18.9955	63.0382	63.2345	36.9416	
Thu, Apr 6, 2023	23.4936	11.8500	41.0783	12.2341	45.9336	12.4857	27.1713	13.1688	13.1676	13.1662	17.4136	18.9885	63.2769	63.3117	37.0307	
Mon, Apr 10, 2023	23.4907	11.8479	41.0681	12.2302	45.9175	12.4810	27.1614	13.1708	13.1696	13.1681	17.4205	18.9465	63.3415	63.9086	36.8557	
Tue, Apr 11, 2023	23.5145	11.8652	41.1615	12.2607	46.0422	12.5173	27.2455	13.2191	13.2178	13.2164	17.4223	18.8640	63.3385	64.3619	37.1425	
Wed, Apr 12, 2023	23.5150	11.8645	41.1525	12.2576	46.0289	12.5132	27.2355	13.2112	13.2099	13.2085	17.4240	18.8948	63.0778	63.8884	37.4084	
Thu, Apr 13, 2023	23.5908	11.9220	41.4740	12.3625	46.4570	12.6376	27.5240	13.3822	13.3810	13.3795	17.4257	18.8658	63.9243	64.6242	37.9032	
Fri, Apr 14, 2023	23.5673	11.9048	41.3823	12.3322	46.3333	12.6015	27.4408	13.3383	13.3370	13.3355	17.4274	18.7807	63.7909	64.2217	37.7565	
Mon, Apr 17, 2023	23.5764	11.9115	41.4200	12.3441	46.3818	12.6155	27.4739	13.3629	13.3616	13.3600	17.4326	18.6906	64.0027	64.8020	37.6402	
Tue, Apr 18, 2023	23.5947	11.9245	41.4889	12.3665	46.4727	12.6418	27.5345	13.3971	13.3958	13.3942	17.4344	18.7118	64.0576	64.7587	37.8820	
Wed, Apr 19, 2023	23.5892	11.9201	41.4633	12.3580	46.4378	12.6316	27.5109	13.3844	13.3830	13.3814	17.4361	18.6911	64.0519	64.8376	37.7652	
Thu, Apr 20, 2023	23.5743	11.9070	41.3812	12.3311	46.3269	12.5992	27.4348	13.3346	13.3333	13.3318	17.4378	18.7667	63.6770	64.3832	37.7867	
Fri, Apr 21, 2023	23.5830	11.9135	41.4176	12.3429	46.3747	12.6130	27.4669	13.3552	13.3539	13.3523	17.4395	18.7377	63.7364	64.3947	37.9012	
Mon, Apr 24, 2023	23.6019	11.9249	41.4685	12.3592	46.4395	12.6315	27.5084	13.3744	13.3731	13.3716	17.4448	18.8137	63.7911	64.2247	38.0490	
Tue, Apr 25, 2023	23.5227	11.8619	41.1022	12.2394	45.9480	12.4881	27.1741	13.1694	13.1682	13.1667	17.4465	18.9424	62.7851	62.6495	37.6094	
Wed, Apr 26, 2023	23.5002	11.8453	41.0127	12.2099	45.8274	12.4530	27.0931	13.1259	13.1247	13.1232	17.4482	18.8703	62.5441	62.3112	37.5443	
Thu, Apr 27, 2023	23.5845	11.9100	41.3778	12.3288	46.3131	12.5940	27.4203	13.3228	13.3215	13.3199	17.4499	18.7875	63.7692	63.1739	37.8927	
Fri, Apr 28, 2023	23.6310	11.9420	41.5410	12.3819	46.5279	12.6561	27.5628	13.3996	13.3983	13.3968	17.4552	18.8923	64.3024	63.7099	37.9281	
Mon, May 1, 2023	23.6132	11.9307	41.4901	12.3649	46.4594	12.6362	27.5183	13.3844	13.3831	13.3815	17.4569	18.7097	64.2768	63.7492	37.8217	
Tue, May 2, 2023	23.5625	11.8887	41.2374	12.2823	46.1197	12.5370	27.2861	13.2366	13.2353	13.2339	17.4586	18.8880	63.5325	62.5949	37.5239	
Wed, May 3, 2023	23.5570	11.8827	41.1951	12.2686	46.0630	12.5206	27.2472	13.2082	13.2070	13.2056	17.4603	18.9744	63.0898	62.6068	37.6661	Wed, May 3, 2023 Federal Reserve raised the interest rate 0.25%
Thu, May 4, 2023	23.5210	11.8552	41.0418	12.2183	45.8572	12.4606	27.1082	13.1284	13.1272	13.1258	17.4621	18.9403	62.6413	61.9728	37.5526	
Fri, May 5, 2023	23.6164	11.9281	41.4512	12.3519	46.4032	12.6194	27.4768	13.3481	13.3469	13.3454	17.4638	18.8824	63.8020	63.3533	38.0201	
Mon, May 8, 2023	23.6204	11.9310	41.4679	12.3569	46.4230	12.6249	27.4902	13.3614	13.3601	13.3586	17.4691	18.7848	63.8320	63.4600	38.0800	
Tue, May 9, 2023	23.5987	11.9142	41.3735	12.3259	46.2963	12.5881	27.4049	13.3124	13.3110	13.3095	17.4708	18.7636	63.5443	63.3500	37.9533	
Wed, May 10, 2023	23.6228	11.9302	41.4516	12.3515	46.3998	12.6181	27.4731	13.3453	13.3441	13.3426	17.4725	18.8773	63.8312	63.6510	37.8998	
Thu, May 11, 2023	23.6092	11.9184	41.3792	12.3277	46.3016	12.5892	27.4055	13.3023	13.3011	13.2996	17.4743	18.9267	63.7353	63.2340	37.7281	
Fri, May 12, 2023	23.5954	11.9087	41.3293	12.3111	46.2338	12.5694	27.3602	13.2809	13.2796	13.2781	17.4760	18.8390	63.6485	63.0152	37.6821	
Mon, May 15, 2023	23.6303	11.9344	41.4699	12.3567	46.4200	12.6236	27.4861	13.3572	13.3559	13.3544	17.4812	18.7934	63.8457	63.8109	37.9472	
Tue, May 16, 2023	23.5823	11.8978	41.2659	12.2898	46.1457	12.5435	27.3002	13.2504	13.2491	13.2476	17.4830	18.7494	63.4417	62.7722	37.6718	
Wed, May 17, 2023	23.6378	11.9401	41.5033	12.3673	46.4629	12.6359	27.5150	13.3787	13.3774	13.3758	17.4847	18.7164	64.2081	64.0196	37.7635	
Thu, May 18, 2023	23.6677	11.9637	41.6401	12.4117	46.6448	12.6887	27.6382	13.4565	13.4550	13.4534	17.4864	18.6279	64.8255	64.6884	37.7088	
Fri, May 19, 2023	23.6679	11.9639	41.6423	12.4121	46.6462	12.6889	27.6398	13.4596	13.4581	13.4565	17.4882	18.5800	64.7332	64.2249	37.9242	
Mon, May 22, 2023	23.6833	11.9743	41.6944	12.4289	46.7143	12.7088	27.6849	13.4869	13.4854	13.4838	17.4934	18.5707	64.7504	64.9421	37.9625	
Tue, May 23, 2023	23.6193	11.9247	41.4131	12.3369	46.3378	12.5992	27.4304	13.3357	13.3343	13.3326	17.4952	18.5861	64.0250	64.3947	37.4811	
Wed, May 24, 2023	23.5598	11.8794	41.1601	12.2540	45.9985	12.5003	27.2012	13.2031	13.2017	13.2000	17.4969	18.5417	63.5573	63.8069	36.9422	
Thu, May 25, 2023	23.5720	11.8893	41.2185	12.2726	46.0741	12.5219	27.2514	13.2374	13.2359	13.2342	17.4986	18.4614	64.1156	63.4839	36.8224	
Fri, May 26, 2023	23.6452	11.9441	41.5215	12.3715	46.4774	12.6391	27.5228	13.3960	13.3945	13.3928	17.5004	18.4739	64.9565	64.4145	37.1748	
Tue, May 30, 2023	23.6459	11.9401	41.4781	12.3570	46.4158	12.6208	27.4783	13.3602	13.3588	13.3572	17.5074	18.6171	64.9619	64.4110	36.8731	
Wed, May 31, 2023	23.6035	11.9061	41.2798	12.2922	46.1498	12.5433	27.2976	13.2493	13.2479	13.2463	17.5091	18.6851	64.5790	63.9907	36.4059	
Thu, Jun 1, 2023	23.6786	11.9621	41.5876	12.3927	46.5599	12.6625	27.5735	13.4090	13.4076	13.4060	17.5108	18.7260	65.2265	64.6622	36.9878	
Fri, Jun 2, 2023	23.7645	12.0285	41.9642	12.5157	47.0634	12.8092	27.9149	13.6154	13.6139	13.6123	17.5127	18.6319	66.1783	66.5917	37.4047	
Mon, Jun 5, 2023	23.7545	12.0189	41.9026	12.4951	46.9775	12.7838	27.8552	13.5796	13.5782	13.5765	17.5183	18.6328	66.0472	66.0875	37.3440	
Tue, Jun 6, 2023	23.7891	12.0446	42.0432	12.5412	47.1667	12.8392	27.9840	13.6543	13.6529	13.6512	17.5202	18.6533	66.2041	67.1318	37.5298	
Wed, Jun 7, 2023	23.7621	12.0251	41.9392	12.5071	47.0279	12.7990	27.8920	13.6058	13.6043	13.6026	17.5221	18.5597	65.9539	67.7796	37.2473	
Thu, Jun 8, 2023	23.8068	12.0571	42.1098	12.5628	47.2545	12.8647	28.0431	13.6896	13.6882	13.6865	17.5239	18.6424	66.3693	67.7368	37.5767	
Fri, Jun 9, 2023	23.8042	12.0551	42.0986	12.5588	47.2378	12.8596	28.0313	13.6848	13.6834	13.6817	17.5258	18.6042	66.4473	67.3718	37.5563	
Mon, Jun 12, 2023	23.8557	12.0920	42.2958	12.6230	47.4987	12.9352	28.2060	13.7855	13.7840	13.7823	17.5314	18.6371	67.0671	67.9313	37.7171	
Tue, Jun 13, 2023	23.9017	12.1279	42.5025	12.6904	47.7754	13.0159	28.3942	13.9020	13.9005	13.8988	17.5333	18.5523</				

Fri, Jul 14, 2023	24.1430	12.2877	43.3244	12.9552	48.8445	13.3242	29.1032	14.3088	14.3072	14.3055	17.5920	18.6543	69.7345	71.3406	38.8917	
Mon, Jul 17, 2023	24.1639	12.3012	43.3926	12.9773	48.9337	13.3500	29.1627	14.3422	14.3407	14.3389	17.5978	18.6769	70.0036	72.0267	38.7854	
Tue, Jul 18, 2023	24.2119	12.3358	43.5911	13.0423	49.2001	13.4277	29.3433	14.4485	14.4469	14.4451	17.5998	18.6938	70.5015	72.8049	39.0442	
Wed, Jul 19, 2023	24.2266	12.3452	43.6382	13.0578	49.2628	13.4460	29.3849	14.4692	14.4677	14.4659	17.6017	18.7521	70.6685	73.1168	39.0026	
Thu, Jul 20, 2023	24.1808	12.3123	43.4515	12.9961	49.0096	13.3719	29.2133	14.3737	14.3722	14.3704	17.6036	18.6455	70.1974	72.2722	38.8218	Thu, Jul 20, 2023 FedNow Service is now live
Fri, Jul 21, 2023	24.1841	12.3139	43.4569	12.9977	49.0157	13.3735	29.2167	14.3747	14.3732	14.3714	17.6055	18.6571	70.2201	72.1244	38.8425	
Mon, Jul 24, 2023	24.1974	12.3223	43.4989	13.0110	49.0687	13.3885	29.2512	14.3963	14.3947	14.3929	17.6114	18.6334	70.5044	72.1292	38.7806	
Tue, Jul 25, 2023	24.2163	12.3359	43.5775	13.0365	49.1733	13.4189	29.3220	14.4395	14.4379	14.4361	17.6133	18.6144	70.7047	72.2457	38.9313	
Wed, Jul 26, 2023	24.2258	12.3417	43.6042	13.0453	49.2086	13.4293	29.3454	14.4499	14.4484	14.4465	17.6152	18.6653	70.6948	72.5871	38.9458	Wed, Jul 26, 2023 Federal Reserve raised the interest rate 0.25%
Thu, Jul 27, 2023	24.1833	12.3118	43.4387	12.9905	48.9842	13.3635	29.1936	14.3691	14.3675	14.3656	17.6172	18.5164	70.2457	71.6543	38.8820	
Fri, Jul 28, 2023	24.2467	12.3571	43.6964	13.0751	49.3307	13.4647	29.4283	14.5045	14.5029	14.5010	17.6191	18.5820	70.9459	72.6930	39.1484	
Mon, Jul 31, 2023	24.2660	12.3694	43.7577	13.0949	49.4108	13.4880	29.4819	14.5344	14.5328	14.5310	17.6249	18.6043	71.0523	73.0601	39.1413	
Tue, Aug 1, 2023	24.2277	12.3420	43.6036	13.0440	49.2020	13.4269	29.3407	14.4570	14.4553	14.4534	17.6269	18.4987	70.8648	73.1095	38.7558	
Wed, Aug 2, 2023	24.1277	12.2885	43.1728	12.9023	48.6200	13.2568	28.9449	14.2243	14.2226	14.2207	17.6289	18.4426	69.8850	71.8330	38.0070	
Thu, Aug 3, 2023	24.1034	12.2517	43.0826	12.8723	48.4974	13.2209	28.8626	14.1833	14.1815	14.1796	17.6308	18.3188	69.7102	71.6307	37.8756	
Fri, Aug 4, 2023	24.1053	12.2504	43.0581	12.8645	48.4638	13.2110	28.8379	14.1583	14.1566	14.1547	17.6328	18.4709	69.3457	71.4617	38.0032	
Mon, Aug 7, 2023	24.1541	12.2847	43.2515	12.9273	48.7198	13.2853	29.0100	14.2616	14.2599	14.2580	17.6389	18.4477	69.9736	71.7269	38.2463	
Tue, Aug 8, 2023	24.1272	12.2634	43.1181	12.8835	48.5391	13.2323	28.8859	14.1834	14.1818	14.1799	17.6409	18.5100	69.6795	71.0740	38.0127	
Wed, Aug 9, 2023	24.1016	12.2437	42.9976	12.8439	48.3758	13.1845	28.7742	14.1155	14.1139	14.1120	17.6429	18.5294	69.1951	70.4343	38.0083	
Thu, Aug 10, 2023	24.1082	12.2494	43.0380	12.8567	48.4288	13.1999	28.8108	14.1442	14.1425	14.1406	17.6449	18.4205	69.2207	70.3124	38.2391	
Fri, Aug 11, 2023	24.0849	12.2327	42.9435	12.8255	48.3009	13.1625	28.7245	14.0971	14.0954	14.0934	17.6469	18.3534	69.1565	70.2391	37.9419	
Mon, Aug 14, 2023	24.0969	12.2400	42.9786	12.8365	48.3443	13.1747	28.7525	14.1145	14.1128	14.1108	17.6529	18.3322	69.5587	70.3264	37.7351	
Tue, Aug 15, 2023	24.0281	12.1894	42.6839	12.7397	47.9474	13.0589	28.4834	13.9571	13.9554	13.9534	17.6549	18.2913	68.7663	69.4049	37.3461	
Wed, Aug 16, 2023	23.9784	12.1530	42.4732	12.6704	47.6633	12.9759	28.2908	13.8459	13.8441	13.8421	17.6569	18.2386	68.2572	68.6875	37.0454	
Thu, Aug 17, 2023	23.9319	12.1184	42.2700	12.6036	47.3894	12.8959	28.1048	13.7363	13.7346	13.7326	17.6589	18.2220	67.7433	67.8380	36.7892	
Fri, Aug 18, 2023	23.9366	12.1208	42.2776	12.6061	47.3960	12.8987	28.1108	13.7372	13.7355	13.7335	17.6609	18.2605	67.7379	68.1665	36.7288	
Mon, Aug 21, 2023	23.9659	12.1417	42.3975	12.6446	47.5557	12.9439	28.2160	13.8046	13.8028	13.8008	17.6669	18.1725	68.2051	68.2756	36.8578	
Tue, Aug 22, 2023	23.9580	12.1351	42.3547	12.6305	47.4974	12.9268	28.1759	13.7795	13.7777	13.7757	17.6689	18.1902	68.0168	68.0369	36.8641	
Wed, Aug 23, 2023	24.0347	12.1883	42.6457	12.7259	47.8859	13.0398	28.4363	13.9228	13.9211	13.9191	17.6709	18.3557	68.7688	68.8584	37.1939	
Thu, Aug 24, 2023	23.9538	12.1292	42.3036	12.6138	47.4270	12.9061	28.1263	13.7420	13.7403	13.7384	17.6729	18.3086	67.8457	67.9082	36.7345	Thu, Aug 24, 2023 BRICS Meeting Saudi Arabia, Argentina, Egypt, Ethiopia, Iran and United Arab Emirates become unofficial members
Fri, Aug 25, 2023	23.9864	12.1525	42.4357	12.6568	47.6028	12.9572	28.2446	13.8117	13.8100	13.8081	17.6749	18.3117	68.3159	68.2398	36.8297	
Mon, Aug 28, 2023	24.0434	12.1919	42.6514	12.7271	47.8884	13.0400	28.4359	13.9217	13.9200	13.9180	17.6810	18.3540	68.7448	68.7624	37.2248	
Tue, Aug 29, 2023	24.1427	12.2624	43.0482	12.8569	48.4187	13.1943	28.7929	14.1256	14.1239	14.1220	17.6830	18.4666	69.7441	69.9065	37.7590	
Wed, Aug 30, 2023	24.1623	12.2765	43.1277	12.8828	48.5244	13.2251	28.8642	14.1684	14.1667	14.1647	17.6849	18.4562	70.0229	70.2940	37.7857	
Thu, Aug 31, 2023	24.1541	12.2694	43.0808	12.8674	48.4608	13.2065	28.8206	14.1403	14.1386	14.1367	17.6869	18.4862	69.9266	70.4227	37.5660	
Fri, Sep 1, 2023	24.1600	12.2745	43.1161	12.8788	48.5079	13.2204	28.8539	14.1656	14.1639	14.1619	17.6889	18.3996	70.0555	71.1349	37.5600	
Tue, Sep 5, 2023	24.1211	12.2447	42.9376	12.8194	48.2628	13.1482	28.6861	14.0714	14.0697	14.0676	17.6973	18.3032	69.7649	70.0847	37.2907	
Wed, Sep 6, 2023	24.0918	12.2230	42.8103	12.7775	48.0912	13.0982	28.5701	14.0040	14.0022	14.0002	17.6993	18.2763	69.2803	69.8454	37.2047	
Thu, Sep 7, 2023	24.0759	12.2100	42.7269	12.7501	47.9779	13.0650	28.4920	13.9542	13.9525	13.9505	17.7014	18.3241	69.0669	69.3755	37.0887	
Fri, Sep 8, 2023	24.0805	12.2125	42.7361	12.7530	47.9888	13.0680	28.4985	13.9565	13.9548	13.9528	17.7034	18.3450	69.1703	69.3373	37.0328	
Mon, Sep 11, 2023	24.1288	12.2463	42.9262	12.8147	48.2401	13.1408	28.6674	14.0578	14.0560	14.0540	17.7097	18.3183	69.6351	69.6378	37.3818	
Tue, Sep 12, 2023	24.1061	12.2290	42.8208	12.7801	48.0982	13.0995	28.5711	13.9995	13.9978	13.9958	17.7117	18.3330	69.2409	69.5102	37.2703	
Wed, Sep 13, 2023	24.1025	12.2253	42.7935	12.7709	48.0596	13.0879	28.5434	13.9812	13.9794	13.9775	17.7138	18.3581	69.3271	69.0600	37.1691	
Thu, Sep 14, 2023	24.1601	12.2674	43.0384	12.8509	48.3869	13.1832	28.7650	14.1144	14.1127	14.1106	17.7159	18.3282	69.9307	69.7014	37.5711	
Fri, Sep 15, 2023	24.1118	12.2319	42.8329	12.7835	48.1106	13.1027	28.5783	14.0063	14.0045	14.0025	17.7179	18.2850	69.0831	69.0005	37.5561	
Mon, Sep 18, 2023	24.1084	12.2271	42.7928	12.7698	48.0529	13.0854	28.5370	13.9793	13.9776	13.9756	17.7242	18.3122	69.1341	68.6603	37.3810	
Tue, Sep 19, 2023	24.1007	12.2216	42.7627	12.7597	48.0113	13.0731	28.5089	13.9660	13.9642	13.9622	17.7262	18.2577	68.9852	68.4045	37.4531	
Wed, Sep 20, 2023	24.0645	12.1946	42.6033	12.7074	47.7969	13.0106	28.3637	13.8803	13.8786	13.8765	17.7283	18.2480	68.3417	67.9077	37.4073	Wed, Sep 20, 2023 Federal Reserve paused raising interest rates
Thu, Sep 21, 2023	23.9589	12.1182	42.1666	12.5641	47.2103	12.8396	27.9675	13.6531	13.6513	13.6492	17.7303	18.1264	67.2229	66.5637	36.8311	
Fri, Sep 22, 2023	23.9569	12.1152	42.1402	12.5554	47.1740	12.8289	27.9418	13.6332	13.6315	13.6294	17.7324	18.1937	67.0697	66.4617	36.8195	
Mon, Sep 25, 2023	23.9561	12.1146	42.1388	12.5543	47.1688	12.8272	27.9384	13.6388	13.6370	13.6349	17.7386	18.0669	67.3407	66.6921	36.5989	
Tue, Sep 26, 2023	23.8767	12.0562	41.7998	12.4434	46.7150	12.6951	27.6321	13.4589	13.4570	13.4549	17.7407	18.0485	66.3528	65.8287	36.1784	
Wed, Sep 27, 2023	23.8754	12.0558	41.8011	12.4436	46.7165	12.6957	27.6343	13.4645	13.4626	13.4605	17.7428	17.9792	66.3691	66.4175	36.0820	
Thu, Sep 28, 2023	23.9222	12.0887	41.9835	12.5032	46.9593	12.7662	27.7972	13.5573	13.5555	13.5534	17.7448	18.0275	66.7689	67.0891	36.3359	
Fri, Sep 29, 2023	23.9132	12.0811	41.9348	12.4870	46.8922	12.7466	27.7514	13.5306	13.5287	13.5266	17.7490	18.0170	66.5900	66.9696	36.2968	
Mon, Oct 2, 2023	23.8678	12.0497	41.7526	12.4268	46.6456	12.6745	27.5848	13.4398	13.4379	13.4357	17.7531	17.8913	66.5952	66.1459	35.7699	
Tue, Oct 3, 2023	23.7739	11.9850	41.3772	12.3036	46.1427	12.5280	27.2464	13.2488	13.2469	13.2447	17.7555	17.7489	65.6854	64.8305	35.3023	
Wed, Oct 4, 2023	23.8156	12.0122	41.5233	12.3514	46.3362	12.5841	27.3748	13.3169	13.3149	13.3128	17.7578	17.8660	66.2179	65.2107	35.3220	
Thu, Oct 5, 2023	23.8320	12.0230	41.5830	12.3707	46.4145	12.6067	27.4269	13.3469	13.3450	13.3428	17.7601	17.8728	66.1431	65.1397	35.6269	
Fri, Oct 6, 2023	23.8983	12.0696	41.8627	12.4617	46.7859	12.7145	27.6773	13.4								

Thu, Nov 2, 2023	23.9846	12.1107	41.9749	12.4932	46.8949	12.7417	27.7299	13.5068	13.5048	13.5027	17.8255	18.0142	67.1201	64.6338	36.1882	
Fri, Nov 3, 2023	24.0695	12.1680	42.2992	12.5992	47.3266	12.8672	28.0194	13.6690	13.6671	13.6650	17.8279	18.1398	67.7535	66.2469	36.5816	
Mon, Nov 6, 2023	24.0624	12.1621	42.2596	12.5855	47.2687	12.8497	27.9789	13.6494	13.6475	13.6454	17.8353	18.0589	67.8745	65.4909	36.5044	
Tue, Nov 7, 2023	24.0689	12.1649	42.2640	12.5869	47.2736	12.8510	27.9807	13.6446	13.6427	13.6406	17.8377	18.1480	68.0685	65.7768	36.2489	
Wed, Nov 8, 2023	24.0714	12.1653	42.2560	12.5842	47.2611	12.8471	27.9706	13.6345	13.6326	13.6305	17.8401	18.2077	68.1398	65.3721	36.2022	
Thu, Nov 9, 2023	24.0325	12.1391	42.1096	12.5359	47.0638	12.7895	27.8382	13.5651	13.5632	13.5610	17.8425	18.0669	67.6016	64.4925	36.2846	
Fri, Nov 10, 2023	24.0980	12.1840	42.3715	12.6212	47.4117	12.8905	28.0717	13.7013	13.6993	13.6972	17.8449	18.0891	68.6674	65.2391	36.3361	
Mon, Nov 13, 2023	24.1068	12.1883	42.3846	12.6250	47.4255	12.8942	28.0796	13.7048	13.7028	13.7007	17.8523	18.0954	68.6141	65.2409	36.4041	
Tue, Nov 14, 2023	24.2769	12.3045	43.0547	12.8445	48.3215	13.1551	28.6828	14.0474	14.0455	14.0434	17.8547	18.3099	69.9367	68.1010	37.3679	
Wed, Nov 15, 2023	24.2799	12.3073	43.0775	12.8516	48.3508	13.1635	28.7034	14.0660	14.0641	14.0619	17.8572	18.2064	70.0608	68.3315	37.3664	
Thu, Nov 16, 2023	24.2813	12.3063	43.0573	12.8448	48.3214	13.1545	28.6808	14.0458	14.0439	14.0418	17.8596	18.3065	70.1602	67.5634	37.2970	
Fri, Nov 17, 2023	24.3253	12.3364	43.2315	12.9018	48.5543	13.2224	28.8382	14.1370	14.1352	14.1331	17.8620	18.3358	70.2515	68.2675	37.7726	
Mon, Nov 20, 2023	24.3755	12.3694	43.4143	12.9612	48.7953	13.2922	28.9992	14.2296	14.2278	14.2257	17.8694	18.3682	70.7779	68.7254	37.9722	
Tue, Nov 21, 2023	24.3583	12.3564	43.3307	12.9336	48.6815	13.2588	28.9210	14.1819	14.1801	14.1780	17.8718	18.3841	70.6360	68.2231	37.8250	
Wed, Nov 22, 2023	24.3817	12.3722	43.4211	12.9631	48.8017	13.2937	29.0020	14.2293	14.2274	14.2253	17.8743	18.3923	70.9262	68.6717	37.8638	
Fri, Nov 24, 2023	24.4048	12.3880	43.5144	12.9932	48.9246	13.3294	29.0852	14.2822	14.2803	14.2782	17.8792	18.3319	70.9689	69.0654	38.1526	
Mon, Nov 27, 2023	24.4062	12.3858	43.4791	12.9813	48.8736	13.3141	29.0479	14.2527	14.2508	14.2487	17.8866	18.4329	70.8323	68.9552	38.0537	
Tue, Nov 28, 2023	24.4176	12.3923	43.5075	12.9906	48.9102	13.3246	29.0712	14.2617	14.2599	14.2579	17.8890	18.5010	70.9014	68.8451	38.0913	
Wed, Nov 29, 2023	24.4347	12.4026	43.5559	13.0065	48.9749	13.3435	29.1140	14.2803	14.2786	14.2766	17.8914	18.6015	70.8461	69.4755	38.1380	
Thu, Nov 30, 2023	24.4482	12.4124	43.6175	13.0264	49.0562	13.3671	29.1694	14.3175	14.3157	14.3137	17.8939	18.5331	71.1354	69.8017	38.1279	
Fri, Dec 1, 2023	24.5204	12.4608	43.8906	13.1162	49.4234	13.4744	29.4173	14.4541	14.4524	14.4504	17.8963	18.6929	71.5592	71.5764	38.4578	
Date	L Income	L 2025	L 2030	L 2035	L 2040	L 2045	L 2050	L 2055	L 2060	L 2065	G Fund	F Fund	C Fund	S Fund	I Fund	Comments

Date	L Income	L 2025	L 2030	L 2035	L 2040	L 2045	L 2050	L 2055	L 2060	L 2065	G Fund	F Fund	C Fund	S Fund	I Fund	Comments
4 Biz Day Gain/Loss	0.1028	0.0685	0.3831	0.1256	0.5132	0.1498	0.3461	0.1924	0.1925	0.1925	0.0073	0.1919	0.6578	2.7313	0.3665	4 Biz Days
5 Biz Day Gain/Loss	0.1142	0.0750	0.4115	0.1349	0.5498	0.1603	0.3694	0.2014	0.2016	0.2017	0.0097	0.2600	0.7269	2.6212	0.4041	1 Week
10 Biz Day Gain/Loss	0.1951	0.1244	0.6591	0.2144	0.8691	0.2520	0.5791	0.3171	0.3172	0.3173	0.0343	0.3571	1.3077	3.3089	0.6852	2 Weeks
15 Biz Day Gain/Loss	0.4224	0.2768	1.5191	0.4950	2.0117	0.5839	1.3456	0.7528	0.7531	0.7532	0.0514	0.6038	2.8918	6.3373	2.1217	3 Weeks
21 Biz Day Gain/Loss	0.5358	0.3501	1.9157	0.6230	2.5285	0.7327	1.6874	0.9473	0.9476	0.9477	0.0708	0.6787	4.4391	6.9426	2.2696	1 Month

250 Business Days (~ 12 months)

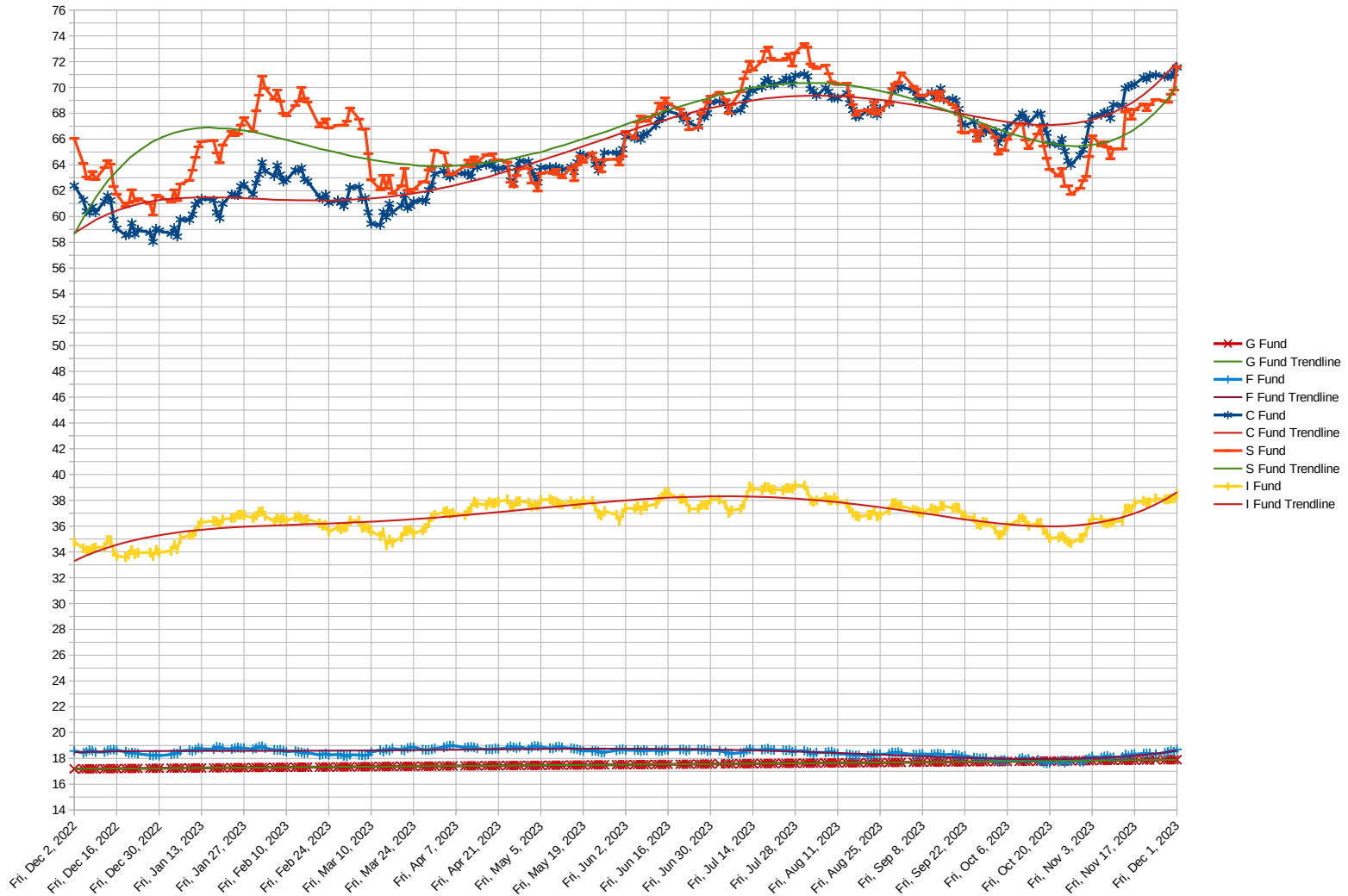
	L Income	L 2025	L 2030	L 2035	L 2040	L 2045	L 2050	L 2055	L 2060	L 2065	G Fund	F Fund	C Fund	S Fund	I Fund	Comments
Min	22.7722	11.3613	38.7567	11.4903	42.9538	11.6319	25.2230	12.0991	12.0978	12.0962	17.1833	17.6115	58.0309	60.1184	33.5960	
Max	24.5204	12.4608	43.8906	13.1162	49.4234	13.4880	29.4819	14.5344	14.5328	14.5310	17.8963	18.9955	71.5592	73.4061	39.1484	
Avg	23.6768	11.9610	41.5868	12.3915	46.5560	12.6616	27.5742	13.4260	13.4245	13.4227	17.5246	18.4721	65.2395	66.4147	36.7555	
Std Deviation	0.424	0.266	1.246	0.395	1.575	0.449	1.026	0.587	0.587	0.587	0.202	0.305	3.645	3.110	1.293	Less Is Better (More Stable)
Min & Max	L min = 11.3613										L max = 49.4234		I min = 17.1833		I max = 73.4061	

Date	L Income	L 2025	L 2030	L 2035	L 2040	L 2045	L 2050	L 2055	L 2060	L 2065	G Fund	F Fund	C Fund	S Fund	I Fund	Comments
Fri, Dec 2, 22	10,000.00	10,000.00	10,000.00	10,000.00	10,000.00	10,000.00	10,000.00	10,000.00	10,000.00	10,000.00	10,000.00	10,000.00	10,000.00	10,000.00	10,000.00	
No. of Shares	433.148	859.690	248.718	835.610	222.672	819.497	376.697	777.732	777.805	777.895	581.960	538.422	160.252	151.414	287.579	
Fri, Dec 1, 23	10,620.96	10,712.43	10,916.38	10,960.03	11,005.18	11,042.24	11,081.42	11,241.42	11,241.14	11,240.90	10,414.94	10,064.66	11,467.53	10,837.63	11,059.64	
\$ Gain/Loss	620.96	712.43	916.38	960.03	1005.18	1042.24	1081.42	1241.42	1241.14	1240.90	414.94	64.66	1467.53	837.63	1059.64	
% Gain/Loss	6.21	7.12	9.16	9.60	10.05	10.42	10.81	12.41	12.41	12.41	4.15	0.65	14.68	8.38	10.60	GRADING: Green: A & B (top 16%) Yellow: C+ (upper middle 34%) Orange: C- (lower middle 34%) Red: D & F (bottom 16%)
% Gain/Loss	C-	C-	C-	C+	C+	C+	C+	C+	C+	C+	D/F	D/F	A/B	C-	C+	Normal (Bell) Curve: http://evolutionaryparenting.com/wp-content/uploads/2013/07/Normal-Bell-Curve-Chart-1000x1000.png
	min = 0.65			max = 14.68							avg = 9.27			std dev = 3.47		
											avg - std dev = 5.80			avg + std dev = 12.74		

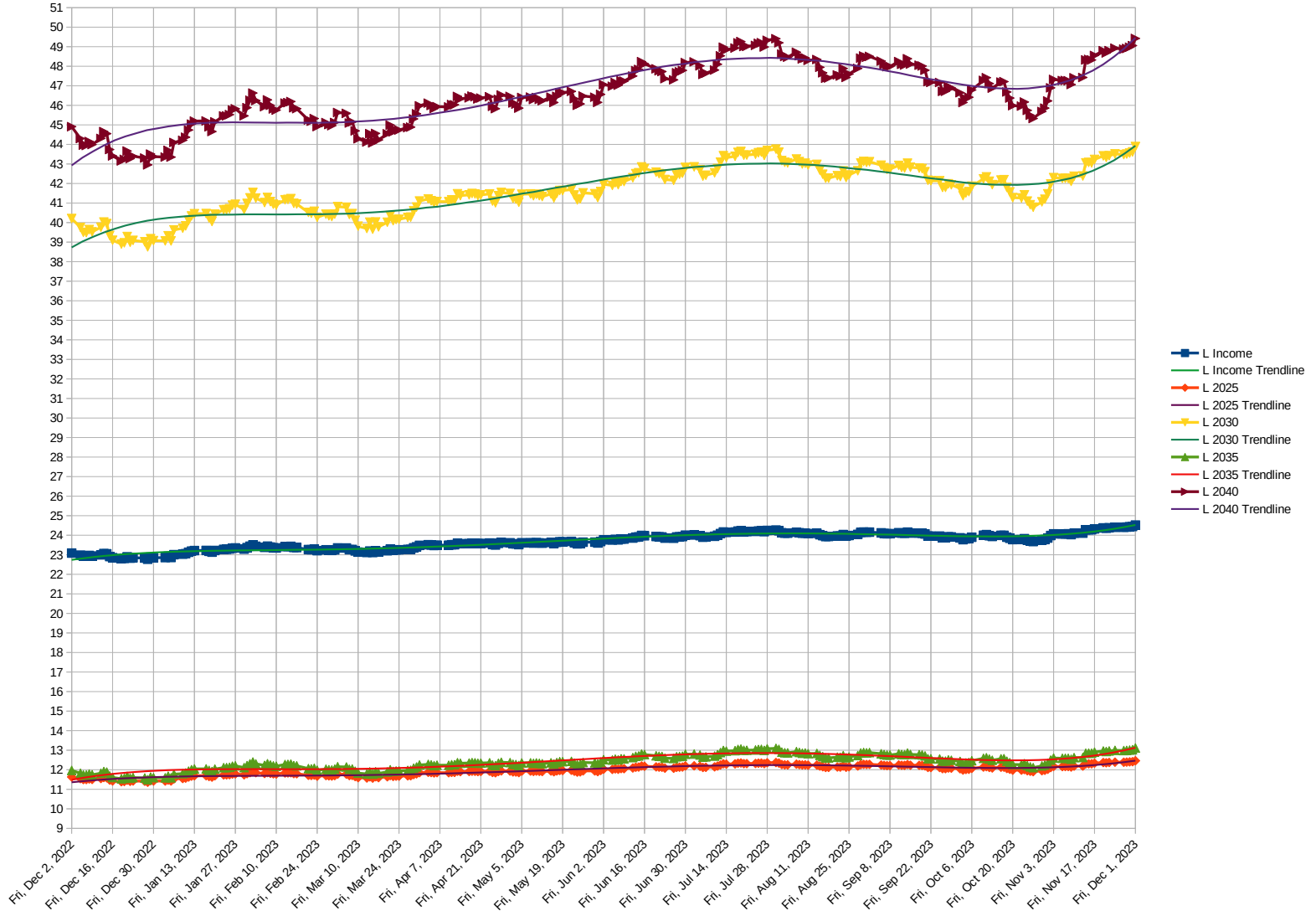
Larry's Distribution 1% 1% 1% 1% 1% 95% 100%

Min & Max		L min =	11.3613	L max =	49.4234	I min =	17.1833	I max =	73.4061
-----------	--	---------	---------	---------	---------	---------	---------	---------	---------

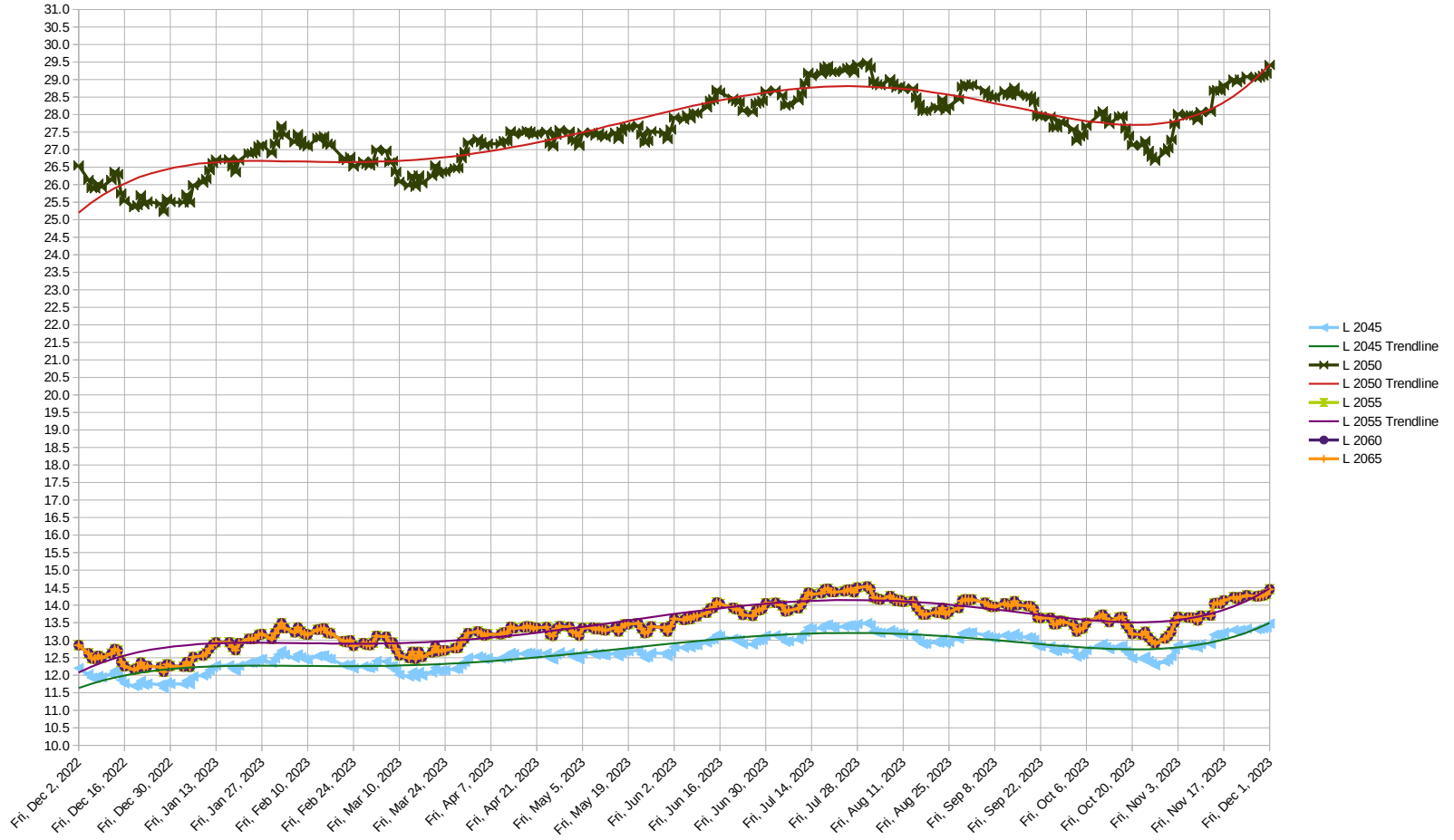
250 Days (~ 1 year)



250 Days (~ 1 year)



250 Days (~ 1 year)



Statistics

21 Business Days (~ 1 month)

	15	14	13	12	11	10	9	8	7	6	5	4	3	2	1	
	S Fund	L 2065	L 2060	L 2055	C Fund	I Fund	L 2050	L 2045	L 2040	L 2035	L 2030	F Fund	L 2025	L Income	G Fund	
	10,000.00	10,000.00	10,000.00	10,000.00	10,000.00	10,000.00	10,000.00	10,000.00	10,000.00	10,000.00	10,000.00	10,000.00	10,000.00	10,000.00	10,000.00	
	154.72	740.59	740.48	740.37	148.99	276.33	360.62	784.82	213.24	800.44	238.24	555.12	825.72	416.93	560.99	
	\$11,074.14	\$10,701.86	\$10,701.68	\$10,701.35	\$10,661.37	\$10,627.17	\$10,608.51	\$10,575.04	\$10,539.18	\$10,498.67	\$10,456.39	\$10,376.76	\$10,289.08	\$10,223.39	\$10,039.72	
	1074.14	701.86	701.68	701.35	661.37	627.17	608.51	575.04	539.18	498.67	456.39	376.76	289.08	223.39	39.72	
	10.74	7.02	7.02	7.01	6.61	6.27	6.09	5.75	5.39	4.99	4.56	3.77	2.89	2.23	0.40	
A/B	C+	C+	C+	C+	C+	C+	C+	C+	C+	C-	C-	C-	D/F	D/F	D/F	

<= 21 Biz Day Ranking Position

Average	5.38
Standard Deviation	2.37
Avg - Std Dev	3.02
Avg + Std Dev	7.75

GRADING: Green: A & B (top 16%) Yellow: C+ (upper middle 34%) Orange: C- (lower middle 34%) Red: D & F (bottom 16%)
<http://evolutionaryparenting.com/wp-content/uploads/2013/08/normal-curve.jpg>

250 Business Days (~ 12 months)

	15	14	13	12	11	10	9	8	7	6	5	4	3	2	1	
	C Fund	L 2055	L 2060	L 2065	L 2050	I Fund	L 2045	L 2040	L 2035	L 2030	S Fund	L 2025	L Income	G Fund	F Fund	
	10,000.00	10,000.00	10,000.00	10,000.00	10,000.00	10,000.00	10,000.00	10,000.00	10,000.00	10,000.00	10,000.00	10,000.00	10,000.00	10,000.00	10,000.00	
	160.252	777.732	777.805	777.895	376.697	287.579	819.497	222.672	835.610	248.718	151.414	859.690	433.148	581.960	538.422	
	11,467.53	11,241.42	11,241.14	11,240.90	11,081.42	11,059.64	11,042.24	11,005.18	10,960.03	10,916.38	10,837.63	10,712.43	10,620.96	10,414.94	10,064.66	
	1,467.53	1,241.42	1,241.14	1,240.90	1,081.42	1,059.64	1,042.24	1,005.18	960.03	916.38	837.63	712.43	620.96	414.94	64.66	
	14.68	12.41	12.41	12.41	10.81	10.60	10.42	10.05	9.60	9.16	8.38	7.12	6.21	4.15	0.65	
A/B	C+	C+	C+	C+	C+	C+	C+	C+	C+	C-	C-	C-	C-	D/F	D/F	

<= 250 Biz Day Ranking Position

Average	9.27
Standard Deviation	3.47
Avg - Std Dev	5.80
Avg + Std Dev	12.74

GRADING: Green: A & B (top 16%) Yellow: C+ (upper middle 34%) Orange: C- (lower middle 34%) Red: D & F (bottom 16%)
<http://evolutionaryparenting.com/wp-content/uploads/2013/08/normal-curve.jpg>

21 Business Days Fund Performance
 A & B Grade = 4 pts / C+ Grade = 3 pts / C- = 2 pt / D & F = 1 pts

Date	L Income	L 2025	L 2030	L 2035	2040	L 2045	2050	L 2055	L 2060	L 2065	G Fund	F Fund	C Fund	S Fund	I Fund	Comments
6/2/2023	2	2	2	2	3	3	3	3	3	3	1	1	4	4	1	
6/9/2023	2	2	2	2	3	3	3	3	3	3	2	1	4	4	1	
6/16/2023	1	2	2	2	3	3	3	3	3	3	1	1	4	4	2	Wed, Jun 14, 2023 Federal Reserve did not raise the interest rate
6/23/2023	1	2	2	2	3	3	3	3	3	3	1	1	4	4	1	
6/30/2023	1	2	2	2	3	3	3	3	3	3	1	1	4	4	2	
7/7/2023	2	2	3	3	3	3	3	3	3	3	2	1	4	3	1	
7/14/2023	1	2	2	2	3	3	3	3	3	3	1	1	4	4	2	
7/21/2023	1	2	2	2	3	3	3	3	3	3	1	1	3	4	2	Thu, Jul 20, 2023 FedNow Service is now live
7/28/2023	1	2	2	2	3	3	3	3	3	3	1	1	3	4	3	Wed, Jul 26, 2023 Federal Reserve raised the interest rate 0.25%
8/4/2023	1	2	2	2	3	3	3	3	3	3	1	1	3	4	3	
8/11/2023	4	4	3	3	3	2	2	2	2	2	4	2	3	2	1	
8/18/2023	4	4	3	3	3	2	2	2	2	2	4	3	2	1	1	
8/25/2023	4	4	3	3	2	2	2	2	2	2	4	4	2	1	1	Thu, Aug 24, 2023 BRICS Meeting Saudi Arabia, Argentina, Egypt, Ethiopia, Iran and United Arab Emirates become unofficial members
9/1/2023	3	3	3	3	3	3	3	3	3	3	3	2	4	1	1	
9/8/2023	4	3	3	3	2	2	2	2	2	2	4	3	4	2	1	
9/15/2023	1	2	2	2	3	3	3	3	3	3	1	1	3	3	4	
9/22/2023	4	3	3	3	3	2	2	2	2	2	4	2	1	1	4	Wed, Sep 20, 2023 Federal Reserve paused raising interest rates
9/29/2023	4	4	3	3	3	2	2	2	2	2	4	3	1	1	2	
10/6/2023	4	4	3	3	3	2	2	2	2	2	4	2	2	1	2	Sat, Oct 7, 2023 Hamas attacked Israel from Gaza Strip; Sun, Oct 8, 2023 Israel declared war on Hamas
10/13/2023	4	4	3	3	3	2	2	2	2	2	4	3	2	1	2	
10/20/2023	4	4	3	3	3	2	2	2	2	2	4	3	3	1	1	
10/27/2023	4	3	3	3	2	2	2	2	2	2	4	4	2	1	2	
11/3/2023	1	1	2	2	3	3	3	3	3	3	1	2	3	2	4	Wed, Nov 1, 2023 Federal Reserve paused raising interest rates
11/10/2023	2	2	3	3	3	3	3	3	3	3	1	2	4	1	2	
11/17/2023	1	1	2	2	3	3	3	3	3	3	1	2	3	3	4	
11/24/2023	1	1	2	2	3	3	3	3	3	3	1	1	3	4	3	
12/1/2023	1	1	2	2	3	3	3	3	3	3	1	2	3	4	3	
Date	L Income	L 2025	L 2030	L 2035	L 2040	L 2045	L 2050	L 2055	L 2060	L 2065	G Fund	F Fund	C Fund	S Fund	I Fund	Comments

Larry's Distribut 1% 1% 1% 1% 1%

95%

100%

21 & 250 Business Days – Positive and Above Average Fund Performance (A/B/C+)
21 & 250 Business Days – Positive and Below Average Fund Performance (C-)

Date	L Income	L 2025	L 2030	L 2035	L 2040	L 2045	L 2050	L 2055	L 2060	L 2065	G Fund	F Fund	C Fund	S Fund	I Fund	Comments
6/2/2023	C-	C-	C-	C-	A/B/C+	A/B/C+	A/B/C+	A/B/C+	A/B/C+	A/B/C+			A/B/C+			
6/9/2023	C-	C-	C-	C-	A/B/C+	A/B/C+	A/B/C+	A/B/C+	A/B/C+	A/B/C+	C-		A/B/C+			
6/16/2023		C-	C-	C-	A/B/C+	A/B/C+	A/B/C+	A/B/C+	A/B/C+	A/B/C+			A/B/C+	A/B/C+	C-	Wed, Jun 14, 2023 Federal Reserve did not raise the interest rate
6/23/2023		C-	C-	C-	A/B/C+	A/B/C+	A/B/C+	A/B/C+	A/B/C+	A/B/C+			A/B/C+	C-		
6/30/2023		C-	C-	C-	A/B/C+	A/B/C+	A/B/C+	A/B/C+	A/B/C+	A/B/C+			A/B/C+	A/B/C+	C-	
7/7/2023	C-	C-	C-	A/B/C+	A/B/C+	A/B/C+	A/B/C+	A/B/C+	A/B/C+	A/B/C+			A/B/C+	C-		
7/14/2023		C-	C-	C-	A/B/C+	A/B/C+	A/B/C+	A/B/C+	A/B/C+	A/B/C+			A/B/C+	A/B/C+	C-	
7/21/2023		C-	C-	C-	A/B/C+	A/B/C+	A/B/C+	A/B/C+	A/B/C+	A/B/C+			A/B/C+	C-	C-	Thu, Jul 20, 2023 FedNow Service is now live
7/28/2023		C-	C-	C-	A/B/C+	A/B/C+	A/B/C+	A/B/C+	A/B/C+	A/B/C+			A/B/C+	C-	A/B/C+	Wed, Jul 26, 2023 Federal Reserve raised the interest rate 0.25%
8/4/2023		C-	C-	C-	C-	A/B/C+	A/B/C+	A/B/C+	A/B/C+	A/B/C+			A/B/C+	C-	A/B/C+	
8/11/2023											C-					
8/18/2023											A/B/C+					
8/25/2023																Thu, Aug 24, 2023 BRICS Meeting Saudi Arabia, Argentina, Egypt, Ethiopia, Iran and United Arab Emirates become unofficial members
9/1/2023	C-	C-	C-	A/B/C+	A/B/C+	A/B/C+	A/B/C+	A/B/C+	A/B/C+	A/B/C+			A/B/C+			
9/8/2023																
9/15/2023		C-	C-	C-	A/B/C+	A/B/C+	A/B/C+	A/B/C+	A/B/C+	A/B/C+			A/B/C+	C-	A/B/C+	
9/22/2023	C-															Wed, Sep 20, 2023 Federal Reserve paused raising interest rates
9/29/2023																
10/6/2023																Sat, Oct 7, 2023 Hamas attacked Israel from Gaza Strip; Sun, Oct 8, 2023 Israel declared war on Hamas
10/13/2023																
10/20/2023																
10/27/2023											C-					
11/3/2023			C-	C-	A/B/C+	A/B/C+	A/B/C+	A/B/C+	A/B/C+	A/B/C+			A/B/C+	C-	A/B/C+	Wed, Nov 1, 2023 Federal Reserve paused raising interest rates
11/10/2023	C-	C-	A/B/C+	A/B/C+	A/B/C+	A/B/C+	A/B/C+	A/B/C+	A/B/C+	A/B/C+			A/B/C+	C-	C-	
11/17/2023			C-	C-	A/B/C+	A/B/C+	A/B/C+	A/B/C+	A/B/C+	A/B/C+			A/B/C+	C-	A/B/C+	
11/24/2023			C-	C-	A/B/C+	A/B/C+	A/B/C+	A/B/C+	A/B/C+	A/B/C+			A/B/C+	C-	A/B/C+	
12/1/2023			C-	C-	A/B/C+	A/B/C+	A/B/C+	A/B/C+	A/B/C+	A/B/C+			A/B/C+	C-	A/B/C+	

Larry's Distribut 1% 1% 1% 1% 1%

95%

100%

21 Business Days Rank
 10 - Highest Return 1 - Lowest Return

Date	L Income	L 2025	L 2030	L 2035	L 2040	L 2045	L 2050	L 2055	L 2060	L 2065	G Fund	F Fund	C Fund	S Fund	I Fund	Comments	Cross Check
6/2/2023	4	5	6	7	8	9	10	13	12	11	3	1	14	15	2		
6/9/2023	4	5	6	7	8	9	10	13	12	11	3	1	14	15	2		
6/16/2023	3	4	6	7	8	9	10	11	13	12	2	1	14	15	5	Wed, Jun 14, 2023 Federal Reserve did not raise the interest rate	
6/23/2023	4	5	6	7	8	9	10	12	11	13	1	2	15	14	3		
6/30/2023	3	4	6	7	8	9	10	13	12	11	2	1	14	15	5		
7/7/2023	4	5	6	7	8	10	11	14	13	12	3	1	15	9	2		
7/14/2023	3	4	6	7	8	9	10	12	11	13	1	2	14	15	5		
7/21/2023	3	4	5	7	8	9	10	11	12	13	2	1	14	15	6	Thu, Jul 20, 2023 FedNow Service is now live	
7/28/2023	3	4	5	6	7	8	9	13	14	12	2	1	11	15	10	Wed, Jul 26, 2023 Federal Reserve raised the interest rate 0.25%	
8/4/2023	3	4	5	6	7	8	10	13	14	12	1	2	9	15	11		

8/11/2023	↑ 14	↑ 13	↑ 11	↓ 10	↓ 9	↓ 8	↓ 7	↓ 6	↓ 5	↓ 4	↑ 15	↓ 2	↓ 12	↓ 3	↓ 1		
8/18/2023	↑ 14	↑ 13	↑ 11	↓ 10	↓ 9	↓ 7	↓ 6	↓ 5	↓ 4	↓ 3	↑ 15	↓ 12	↓ 8	↓ 1	↓ 2		
8/25/2023	↑ 14	↓ 12	↑ 11	↓ 10	↓ 9	↓ 7	↓ 6	↓ 5	↓ 4	↓ 3	↑ 15	↑ 13	↓ 8	↓ 1	↓ 2		Thu, Aug 24, 2023 BRICS Meeting Saudi Arabia, Argentina, Egypt, Ethiopia, Iran and United Arab Emirates become unofficial members
9/1/2023	↑ 13	↓ 12	↑ 11	↓ 10	↓ 9	↓ 8	↓ 7	↓ 6	↓ 5	↓ 4	↑ 14	↓ 3	↑ 15	↓ 2	↓ 1		
9/8/2023	↑ 13	↓ 12	↓ 10	↓ 9	↓ 8	↓ 7	↓ 6	↓ 5	↓ 4	↓ 3	↑ 15	↓ 11	↑ 14	↓ 2	↓ 1		
9/15/2023	↓ 3	↓ 4	↓ 5	↓ 6	↓ 7	↓ 8	↓ 9	↑ 13	↓ 11	↓ 12	↓ 1	↓ 2	↑ 14	↓ 10	↑ 15		Wed, Sep 20, 2023 Federal Reserve paused raising interest rates
9/22/2023	↑ 13	↓ 12	↑ 11	↓ 10	↓ 9	↓ 8	↓ 6	↓ 5	↓ 4	↓ 3	↑ 15	↓ 7	↓ 2	↓ 1	↑ 14		
9/29/2023	↑ 14	↑ 13	↑ 11	↓ 10	↓ 9	↓ 8	↓ 6	↓ 5	↓ 4	↓ 3	↑ 15	↓ 12	↓ 2	↓ 1	↓ 7		
10/6/2023	↑ 14	↑ 13	↑ 12	↓ 11	↑ 10	↓ 9	↓ 7	↓ 4	↓ 3	↓ 2	↑ 15	↓ 6	↓ 5	↓ 1	↓ 8		Sat, Oct 7, 2023 Hamas attacked Israel from Gaza Strip; Sun, Oct 8, 2023 Israel declared war on Hamas
10/13/2023	↑ 14	↑ 13	↑ 11	↓ 10	↓ 9	↓ 8	↓ 7	↓ 4	↓ 3	↓ 2	↑ 15	↓ 12	↓ 6	↓ 1	↓ 5		
10/20/2023	↑ 14	↑ 13	↑ 12	↓ 10	↓ 8	↓ 7	↓ 6	↓ 5	↓ 4	↓ 3	↑ 15	↓ 9	↓ 11	↓ 2	↓ 1		
10/27/2023	↑ 14	↓ 12	↑ 11	↓ 10	↓ 9	↓ 8	↓ 7	↓ 4	↓ 3	↓ 2	↑ 15	↑ 13	↓ 6	↓ 1	↓ 5		
11/3/2023	↓ 2	↓ 3	↓ 6	↓ 7	↓ 8	↓ 9	↑ 10	↓ 11	↓ 12	↑ 13	↓ 1	↓ 4	↑ 14	↓ 5	↑ 15		Wed, Nov 1, 2023 Federal Reserve paused raising interest rates
11/10/2023	↓ 4	↓ 5	↓ 7	↓ 8	↓ 9	↓ 10	↑ 11	↓ 14	↓ 12	↓ 13	↓ 2	↓ 3	↑ 15	↓ 1	↓ 6		
11/17/2023	↓ 2	↓ 3	↓ 5	↓ 6	↓ 7	↓ 8	↓ 9	↓ 11	↓ 12	↑ 13	↓ 1	↓ 4	↑ 10	↑ 14	↑ 15		
11/24/2023	↓ 2	↓ 4	↓ 5	↓ 6	↓ 7	↓ 8	↑ 9	↓ 11	↓ 12	↓ 13	↓ 1	↓ 3	↑ 14	↑ 15	↓ 10		
12/1/2023	↓ 2	↓ 3	↑ 5	↓ 6	↑ 7	↓ 8	↑ 9	↓ 12	↑ 13	↑ 14	↓ 1	↓ 4	↓ 11	↑ 15	↓ 10		
Date	L Income	L 2025	L 2030	L 2035	L 2040	L 2045	L 2050	L 2055	L 2060	L 2065	G Fund	F Fund	C Fund	S Fund	I Fund	Comments	Cross Check

Larry's Distrib

1%

1%

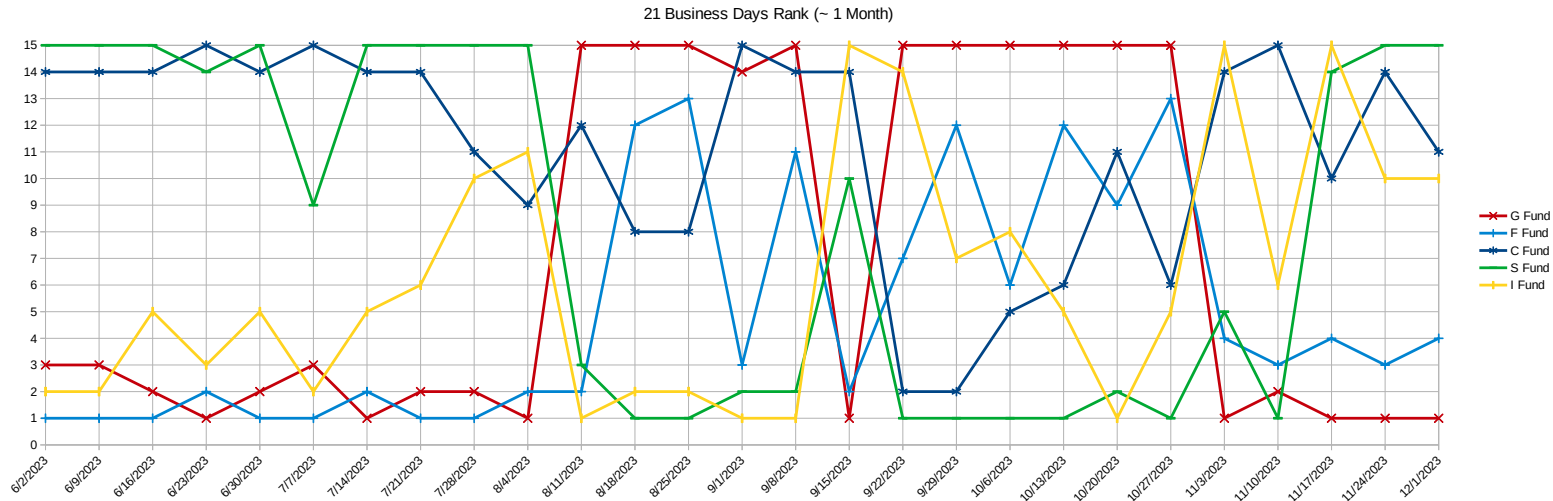
1%

1%

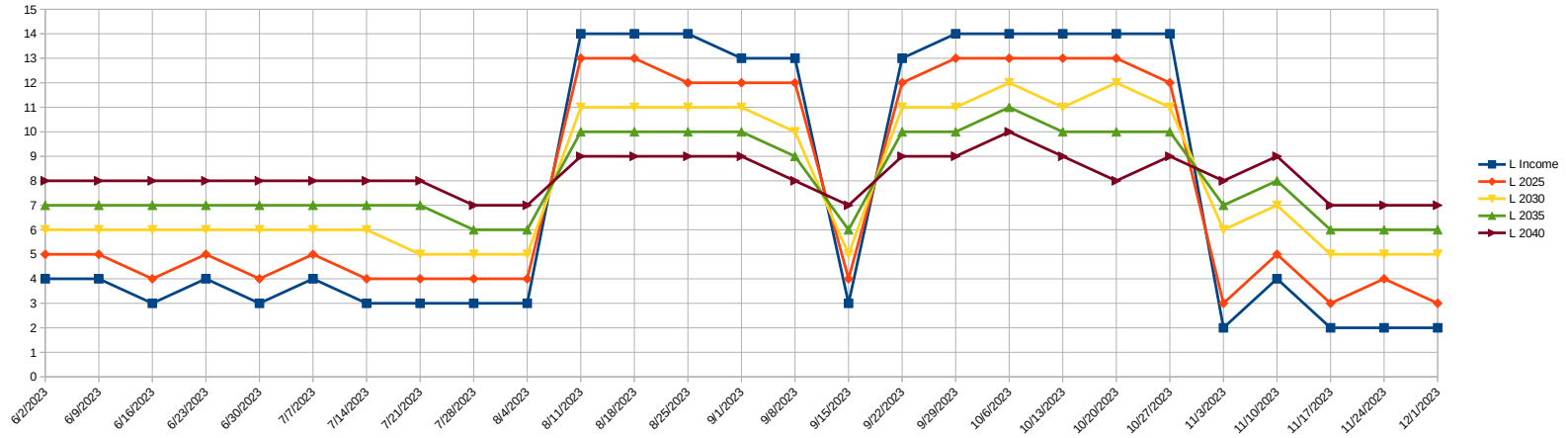
1%

95%

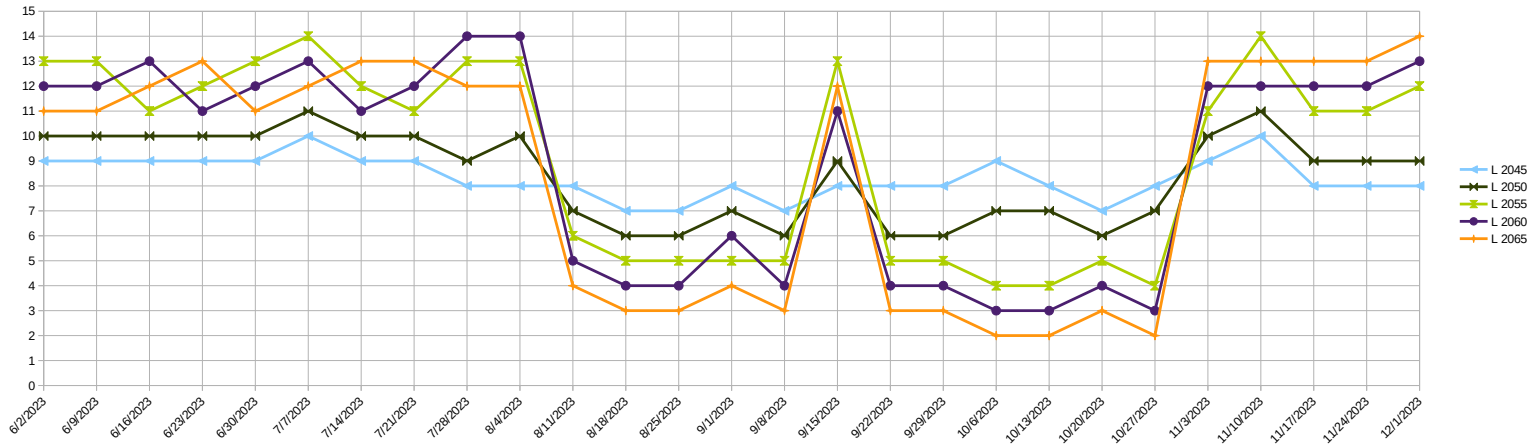
100%



21 Business Days Rank (~ 1 Month)



21 Business Days Rank (~ 1 Month)



My Positions

Approximate Balance \$91,164

Change values in YELLOW cells only!!!

This table is only an approximation because each fund grows at a different rate on a quarterly basis

			G Fund (%)	G Fund (\$)	F Fund (%)	F Fund (\$)	C Fund (%)	C Fund (\$)	S Fund (%)	S Fund (\$)	I Fund (%)	I Fund (\$)	Cross Check (%)	Cross Check (\$)
	My Distribution (%)	My Distribution (\$)												
L Income	1%	\$912	69.14%	\$630	5.61%	\$51	13.18%	\$120	3.23%	\$29	8.84%	\$81	100.00%	\$912
L 2025	1%	\$912	59.04%	\$538	5.96%	\$54	18.19%	\$166	4.56%	\$42	12.25%	\$112	100.00%	\$912
L 2030	1%	\$912	33.89%	\$309	5.99%	\$55	31.15%	\$284	7.93%	\$72	21.04%	\$192	100.00%	\$912
L 2035	1%	\$912	27.20%	\$248	6.86%	\$63	34.07%	\$311	8.79%	\$80	23.08%	\$210	100.00%	\$912
L 2040	1%	\$912	21.06%	\$192	7.19%	\$66	36.98%	\$337	9.66%	\$88	25.11%	\$229	100.00%	\$912
L 2045		\$0	15.63%	\$0	7.62%	\$0	39.39%	\$0	10.50%	\$0	26.86%	\$0	100.00%	\$0
L 2050		\$0	10.82%	\$0	7.43%	\$0	41.87%	\$0	11.27%	\$0	28.61%	\$0	100.00%	\$0
L 2055		\$0	0.53%	\$0	0.47%	\$0	50.66%	\$0	13.69%	\$0	34.65%	\$0	100.00%	\$0
L 2060		\$0	0.47%	\$0	0.53%	\$0	50.66%	\$0	13.69%	\$0	34.65%	\$0	100.00%	\$0
L 2065		\$0	0.39%	\$0	0.61%	\$0	50.66%	\$0	13.69%	\$0	34.65%	\$0	100.00%	\$0
G Fund	95%	\$86,606	100.00%	\$86,606									100.00%	\$86,606
F Fund		\$0			100.00%	\$0							100.00%	\$0
C Fund		\$0					100.00%	\$0					100.00%	\$0
S Fund		\$0							100.00%	\$0			100.00%	\$0
I Fund		\$0									100.00%	\$0	100.00%	\$0
Grand Totals	100.00%	\$91,164	97.10%	\$88,523	0.32%	\$288	1.34%	\$1,218	0.34%	\$312	0.90%	\$823	\$91,164	\$91,164

Important: The Lifecycle percentages change quarterly throughout the year. Updated for Oct-Dec 2023

Lifecycle Funds (%): <https://www.tsp.gov/funds-lifecycle/>

My Distributions

Date	L Income	L 2025	L 2030	L 2035	L 2040	L 2045	L 2050	L 2055	L 2060	L 2065	G Fund	F Fund	C Fund	S Fund	I Fund	Cross Check	Personal Rate of Return - Last 12 months
04/19/22	1%	1%	1%								97%					100%	
04/26/22	1%										99%					100%	
2nd Qtr 2022	≡≡≡	≡≡≡	≡≡≡	≡≡≡	≡≡≡	≡≡≡	≡≡≡	≡≡≡	≡≡≡	≡≡≡	≡≡≡	≡≡≡	≡≡≡	≡≡≡	≡≡≡	≡≡≡	0.27%
Side Note: Percent covers Thu, May 26, 2022 thru Thu, Jun 30, 2022; No data available before Thu, May 26, 2022																	
08/02/22	1%	1%	1%	1%	1%						95%					100%	
09/06/22	1%	1%	1%								97%					100%	
09/20/22	1%	1%									98%					100%	
3rd Qtr 2022	≡≡≡	≡≡≡	≡≡≡	≡≡≡	≡≡≡	≡≡≡	≡≡≡	≡≡≡	≡≡≡	≡≡≡	≡≡≡	≡≡≡	≡≡≡	≡≡≡	≡≡≡	≡≡≡	0.84%
Side Note: Percent covers Thu, May 26, 2022 thru Fri, Sep 30, 2022; No data available before Thu, May 26, 2022																	
11/29/22	1%	1%	1%								97%					100%	
12/06/22	1%	1%	1%	1%	1%						95%					100%	
12/27/22	1%	1%									98%					100%	
4th Qtr 2022	≡≡≡	≡≡≡	≡≡≡	≡≡≡	≡≡≡	≡≡≡	≡≡≡	≡≡≡	≡≡≡	≡≡≡	≡≡≡	≡≡≡	≡≡≡	≡≡≡	≡≡≡	≡≡≡	1.87%
Side Note: Percent covers Thu, May 26, 2022 thru Fri, Dec 31, 2022; No data available before Thu, May 26, 2022																	
01/17/23	1%	1%	1%	1%	1%						95%					100%	
02/28/23	1%	1%									98%					100%	
1st Qtr 2023	≡≡≡	≡≡≡	≡≡≡	≡≡≡	≡≡≡	≡≡≡	≡≡≡	≡≡≡	≡≡≡	≡≡≡	≡≡≡	≡≡≡	≡≡≡	≡≡≡	≡≡≡	≡≡≡	2.89%
Side Note: Percent covers Thu, May 26, 2022 thru Fri, Mar 31, 2023; No data available before Thu, May 26, 2022																	
04/18/23	1%	1%	1%								97%					100%	
06/13/23	1%	1%	1%	1%	1%						95%					100%	
2nd Qtr 2023	≡≡≡	≡≡≡	≡≡≡	≡≡≡	≡≡≡	≡≡≡	≡≡≡	≡≡≡	≡≡≡	≡≡≡	≡≡≡	≡≡≡	≡≡≡	≡≡≡	≡≡≡	≡≡≡	3.65%
Side Note: Percent covers Fri, Jul 1, 2022 thru Fri, Jun 30, 2023																	
08/15/23	1%	1%									98%					100%	
3rd Qtr 2023	≡≡≡	≡≡≡	≡≡≡	≡≡≡	≡≡≡	≡≡≡	≡≡≡	≡≡≡	≡≡≡	≡≡≡	≡≡≡	≡≡≡	≡≡≡	≡≡≡	≡≡≡	≡≡≡	4.10%
Side Note: Percent covers Sat, Oct 1, 2022 thru Sat, Sep 30, 2023																	
12/07/23	1%	1%	1%	1%	1%						95%					100%	
																0%	
																0%	
4th Qtr 2023	≡≡≡	≡≡≡	≡≡≡	≡≡≡	≡≡≡	≡≡≡	≡≡≡	≡≡≡	≡≡≡	≡≡≡	≡≡≡	≡≡≡	≡≡≡	≡≡≡	≡≡≡	≡≡≡	TBA

Date	L Income	L 2025	L 2030	L 2035	L 2040	L 2045	L 2050	L 2055	L 2060	L 2065	G Fund	F Fund	C Fund	S Fund	I Fund	Cross Check	Personal Rate of Return - Last 12 months
------	----------	--------	--------	--------	--------	--------	--------	--------	--------	--------	--------	--------	--------	--------	--------	-------------	--

Last Week, 15, 30 & 60 Biz Days Gain or Loss

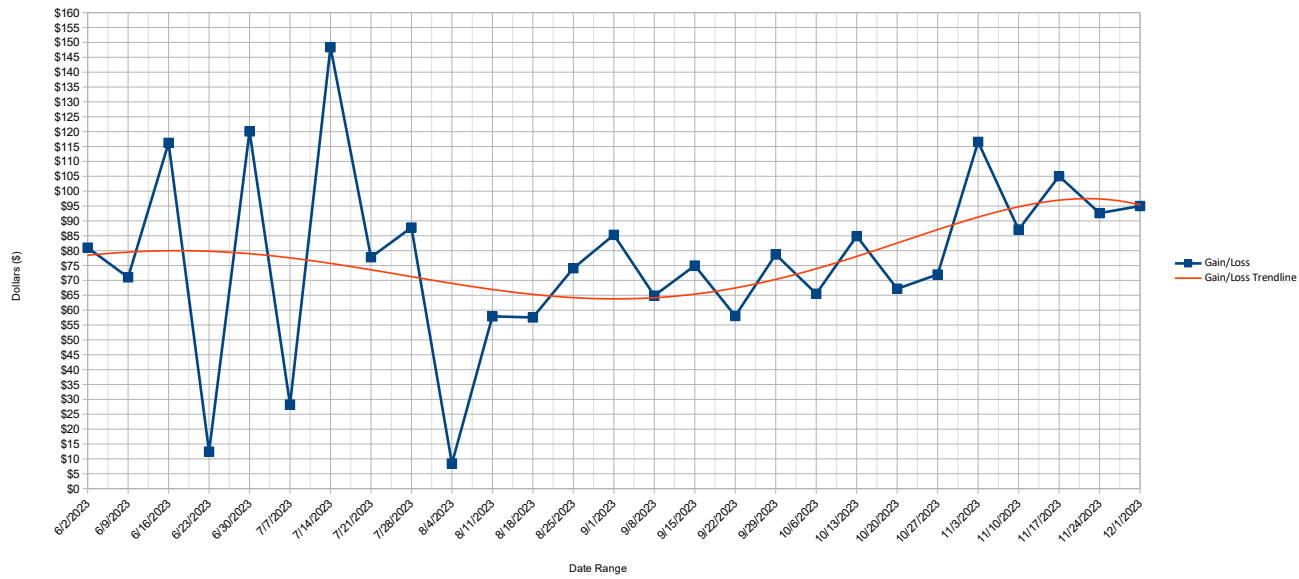
(~1 Week, ~3 Weeks, ~6 Weeks, ~12 Weeks)

https://www.tsp.gov/tsp/activity.do?subaction=ActivitySummary&_name=activity

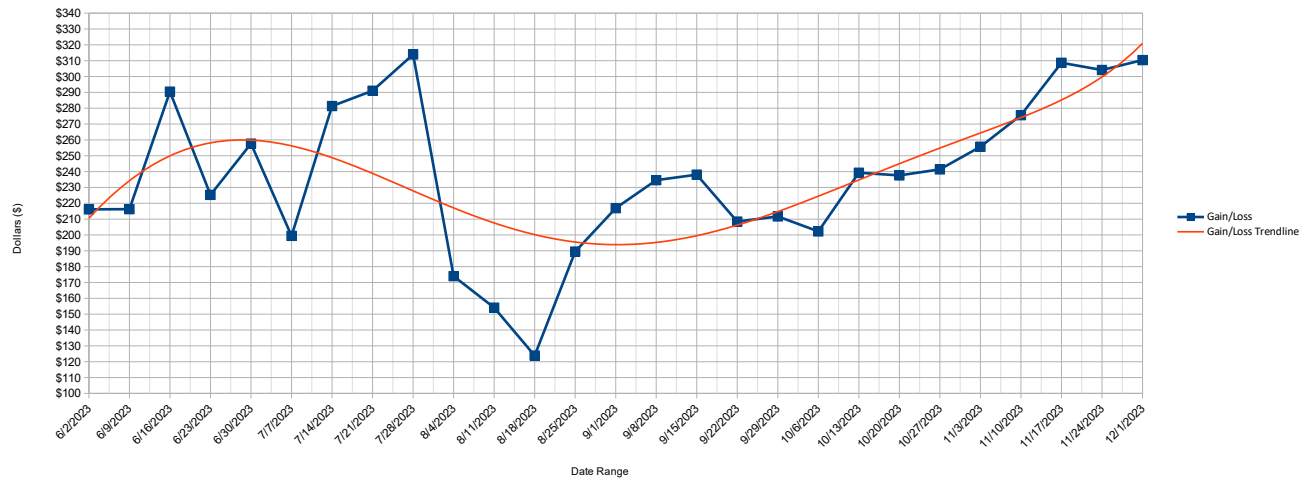
Week	Last Week		Gain/Loss	Funds That Lost	15 Biz Days Period		Gain/Loss	Avg/Wk	Funds That Lost	30 Biz Days Period		Gain/Loss	Avg/Wk	Funds That Lost	60 Biz Days Period		Gain/Loss	Avg/Wk	Funds That Lost
1	5/29/2023	6/2/2023	\$81	None	Fri, 5/12/2023	6/2/2023	\$216	\$72	None	Fri, 4/21/2023	6/2/2023	\$399	\$66	None	Wed, 3/8/2023	6/2/2023	\$836	\$69	None
2	6/5/2023	6/9/2023	\$71	None	Fri, 5/19/2023	6/9/2023	\$216	\$72	None	Fri, 4/28/2023	6/9/2023	\$409	\$68	None	Thu, 3/16/2023	6/9/2023	\$844	\$70	None
3	6/12/2023	6/16/2023	\$116	None	Fri, 5/26/2023	6/16/2023	\$290	\$97	None	Fri, 5/5/2023	6/16/2023	\$479	\$80	None	Thu, 3/23/2023	6/16/2023	\$881	\$73	None
4	6/19/2023	6/23/2023	\$12	L Income – L 2040	Fri, 6/2/2023	6/23/2023	\$225	\$75	L 2035 – L 2040	Thu, 5/11/2023	6/23/2023	\$422	\$70	L 2035 – L 2040	Wed, 3/29/2023	6/23/2023	\$830	\$69	L 2035 – L 2040
5	6/26/2023	6/30/2023	\$120	None	Fri, 6/9/2023	6/30/2023	\$258	\$86	None	Thu, 5/18/2023	6/30/2023	\$479	\$80	None	Wed, 4/5/2023	6/30/2023	\$862	\$72	None
6	7/3/2023	7/7/2023	\$28	L Income – L 2040	Thu, 6/15/2023	7/7/2023	\$199	\$66	L Income – L 2040	Wed, 5/24/2023	7/7/2023	\$459	\$77	None	Wed, 4/12/2023	7/7/2023	\$828	\$69	None
7	7/10/2023	7/14/2023	\$148	None	Fri, 6/23/2023	7/14/2023	\$281	\$94	None	Thu, 6/1/2023	7/14/2023	\$544	\$91	None	Wed, 4/19/2023	7/14/2023	\$907	\$76	None
8	7/17/2023	7/21/2023	\$78	None	Fri, 6/30/2023	7/21/2023	\$291	\$97	None	Thu, 6/8/2023	7/21/2023	\$529	\$88	None	Wed, 4/26/2023	7/21/2023	\$941	\$78	None
9	7/24/2023	7/28/2023	\$88	None	Mon, 7/10/2023	7/28/2023	\$314	\$105	None	Thu, 6/15/2023	7/28/2023	\$513	\$86	None	Wed, 5/3/2023	7/28/2023	\$963	\$80	None
10	7/31/2023	8/4/2023	\$8	L Income – L 2040	Mon, 7/17/2023	8/4/2023	\$174	\$58	L Income – L 2040	Fri, 6/23/2023	8/4/2023	\$455	\$76	None	Wed, 5/10/2023	8/4/2023	\$905	\$75	None
11	8/7/2023	8/11/2023	\$58	L Income – L 2040	Mon, 7/24/2023	8/11/2023	\$154	\$51	L Income – L 2040	Fri, 6/30/2023	8/11/2023	\$445	\$74	None	Wed, 5/17/2023	8/11/2023	\$906	\$76	None
12	8/14/2023	8/18/2023	\$58	L Income – L 2025	Mon, 7/31/2023	8/18/2023	\$124	\$41	L Income – L 2040	Mon, 7/10/2023	8/18/2023	\$438	\$73	L 2025	Wed, 5/24/2023	8/18/2023	\$897	\$75	None
13	8/21/2023	8/25/2023	\$74	None	Mon, 8/7/2023	8/25/2023	\$190	\$63	L Income – L 2040	Mon, 7/17/2023	8/25/2023	\$364	\$61	L Income – L 2040	Thu, 6/1/2023	8/25/2023	\$908	\$76	None
14	8/28/2023	9/1/2023	\$85	None	Mon, 8/14/2023	9/1/2023	\$217	\$72	None	Mon, 7/24/2023	9/1/2023	\$371	\$62	L Income – L 2040	Thu, 6/8/2023	9/1/2023	\$900	\$75	None
15	9/4/2023	9/8/2023	\$65	L Income – L 2025	Fri, 8/18/2023	9/8/2023	\$235	\$78	None	Fri, 7/28/2023	9/8/2023	\$381	\$63	L Income – L 2040	Wed, 6/14/2023	9/8/2023	\$875	\$73	None
16	9/11/2023	9/15/2023	\$75	None	Fri, 8/25/2023	9/15/2023	\$238	\$79	None	Fri, 8/4/2023	9/15/2023	\$423	\$70	L 2025 – L 2040	Thu, 6/22/2023	9/15/2023	\$876	\$73	None
17	9/18/2023	9/22/2023	\$58	L Income – L 2025	Fri, 9/1/2023	9/22/2023	\$208	\$69	L Income – L 2025	Fri, 8/11/2023	9/22/2023	\$416	\$69	L Income – L 2040	Thu, 6/29/2023	9/22/2023	\$873	\$73	L 2025
18	9/25/2023	9/29/2023	\$79	L Income – L 2025	Mon, 9/11/2023	9/29/2023	\$212	\$71	L Income – L 2025	Fri, 8/18/2023	9/29/2023	\$446	\$74	L Income – L 2025	Fri, 7/7/2023	9/29/2023	\$888	\$74	L 2025
19	10/2/2023	10/6/2023	\$65	L Income – L 2025	Mon, 9/18/2023	10/6/2023	\$202	\$67	L Income – L 2025	Fri, 8/25/2023	10/6/2023	\$440	\$73	L Income – L 2025	Fri, 7/14/2023	10/6/2023	\$791	\$66	L Income – L 2040
20	10/9/2023	10/13/2023	\$85	None	Fri, 9/22/2023	10/13/2023	\$239	\$80	L Income – L 2025	Thu, 8/31/2023	10/13/2023	\$447	\$74	L Income – L 2025	Thu, 7/20/2023	10/13/2023	\$800	\$67	L Income – L 2040
21	10/16/2023	10/20/2023	\$67	L Income – L 2025	Fri, 9/29/2023	10/20/2023	\$238	\$79	L Income – L 2025	Fri, 9/8/2023	10/20/2023	\$440	\$73	L Income – L 2025	Thu, 7/27/2023	10/20/2023	\$805	\$67	L Income – L 2040
22	10/23/2023	10/27/2023	\$72	L Income – L 2025	Fri, 10/6/2023	10/27/2023	\$241	\$80	L Income – L 2025	Fri, 9/15/2023	10/27/2023	\$432	\$72	L Income – L 2025	Thu, 8/3/2023	10/27/2023	\$850	\$71	L Income – L 2040
23	10/30/2023	11/3/2023	\$117	None	Mon, 10/16/2023	11/3/2023	\$256	\$85	None	Fri, 9/22/2023	11/3/2023	\$495	\$82	None	Thu, 8/10/2023	11/3/2023	\$914	\$76	L Income – L 2040
24	11/6/2023	11/10/2023	\$87	None	Mon, 10/23/2023	11/10/2023	\$276	\$92	None	Fri, 9/29/2023	11/10/2023	\$513	\$86	None	Thu, 8/17/2023	11/10/2023	\$945	\$79	None
25	11/13/2023	11/17/2023	\$105	None	Mon, 10/30/2023	11/17/2023	\$309	\$103	None	Fri, 10/6/2023	11/17/2023	\$550	\$92	None	Thu, 8/24/2023	11/17/2023	\$976	\$81	None
26	11/20/2023	11/24/2023	\$93	None	Fri, 11/3/2023	11/24/2023	\$304	\$101	None	Fri, 10/13/2023	11/24/2023	\$549	\$92	None	Wed, 8/30/2023	11/24/2023	\$998	\$83	None
27	11/27/2023	12/1/2023	\$95	None	Fri, 11/10/2023	12/1/2023	\$310	\$103	None	Fri, 10/20/2023	12/1/2023	\$574	\$96	None	Thu, 9/7/2023	12/1/2023	\$1,017	\$85	None

Side Note: The first date available to calculate gain/loss calculations is Wed, May 25, 2022
Side Note: Under the "new and improved" TSP website, the gain/loss results thru the last day of the week (Friday) are not available until the following Monday around 10 PM.

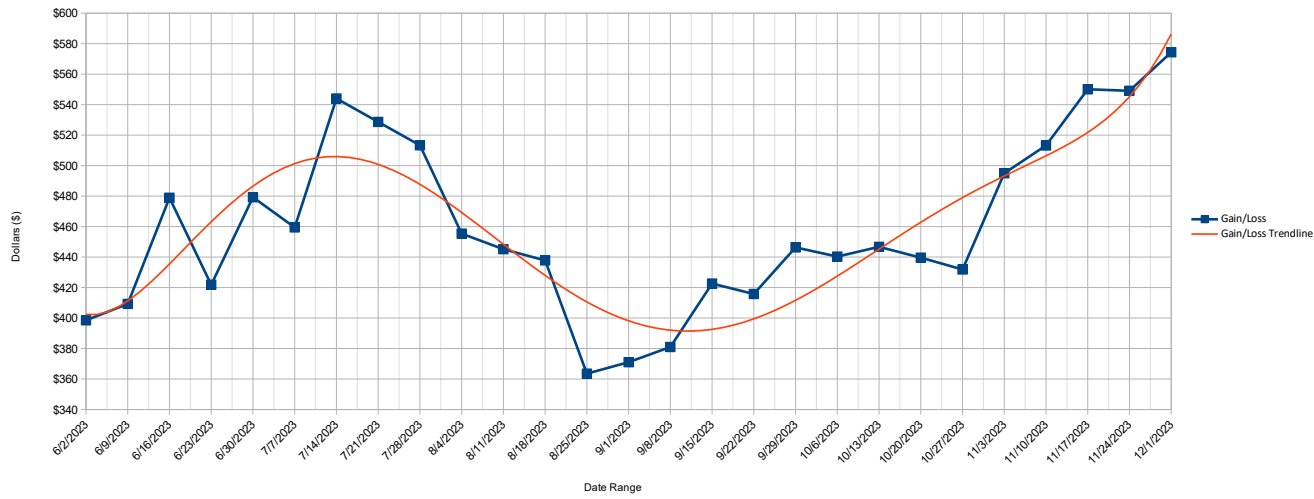
Last Week Gain/Loss



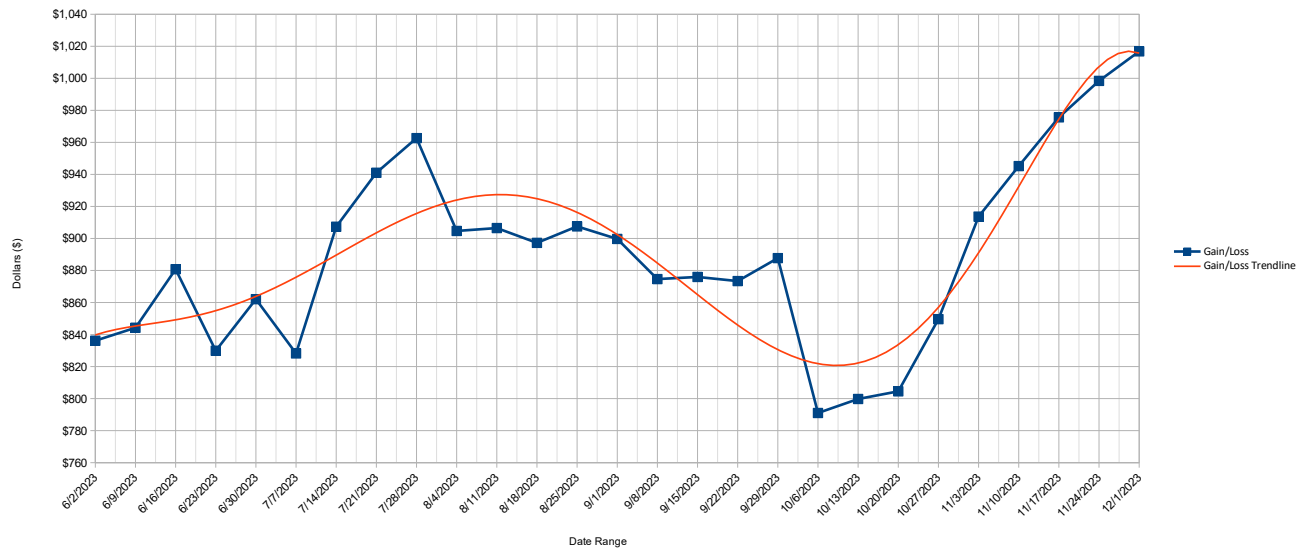
15 Biz Days (~3 Weeks) Gain/Loss



30 Biz Days (~6 Weeks) Gain/ Loss



60 Biz Days (~12 Weeks) Gain/Loss



TSP
<https://www.tsp.gov/inv>

Russell 2000 (*RUT)
<http://finance.yahoo.com/q/hp?s=RUT+Historical+Prices>

Volatility S&P 500 (**VIX)
<https://finance.yahoo.com/quote/%5EVIX/history?p=%5EVIX>

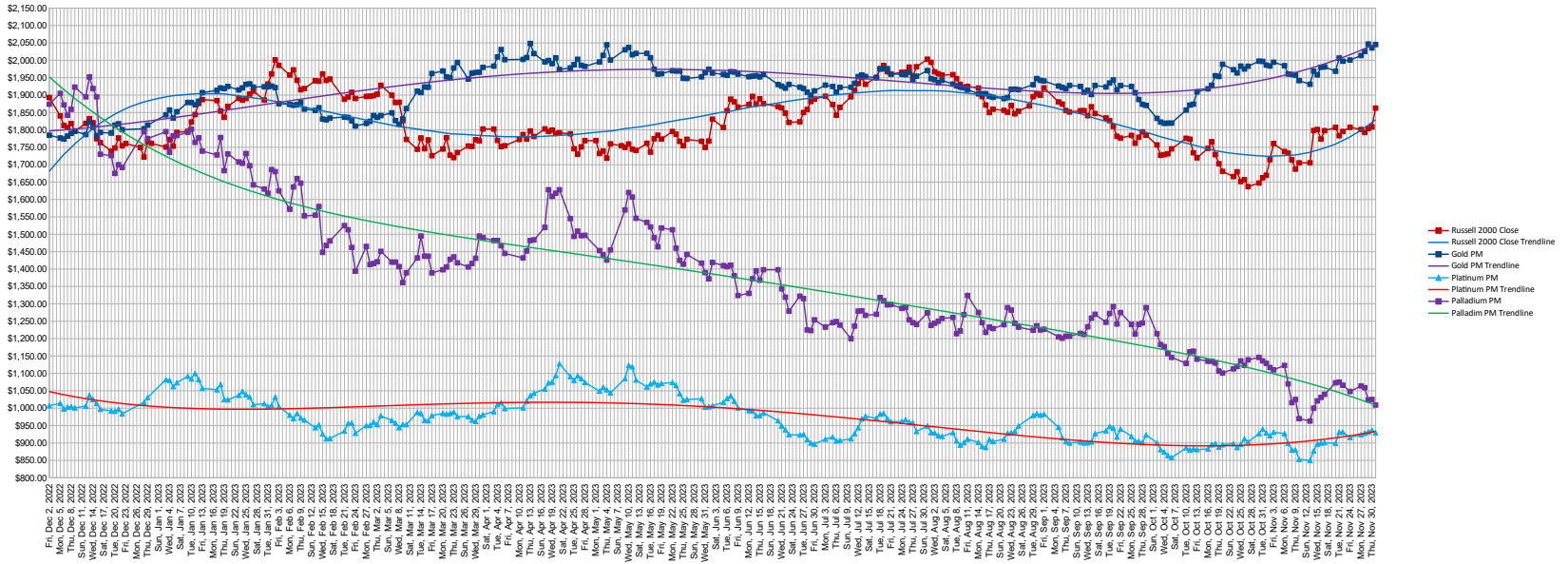
Precious Metals
http://www.kitco.com/gold_prices.html
<https://goldsilver.com/historical-hondon-fiv/>
<http://www.lppm.com/data/>

TSP Date	Russell 2000	Open	High	Low	Russell 2000 Close	Russell 2000 Adj Close*	Volume	Volatility Date	Open	High	Low	Volatility S&P 500 Close	Volatility S&P 500 Adj Close*	Volume	Metals Date	Gold AM	Gold PM	Silver	Platinum AM	Platinum PM	Palladium AM	Palladium PM	Gold to Silver Ratio	POTUS
Fri, Dec 2, 2022	12/02/2022	1,863.94	1,898.45	1,856.48	1,892.84	1,892.84	4,012,620.00	12/02/2022	20.42	20.96	18.95	19.06	19.06	-	12/2/2022	1,800.75	1,784.75	22.61	1,041	1,007	1,900	1,874	78.95	Biden
Mon, Dec 5, 2022	12/05/2022	1,886.01	1,886.01	1,834.42	1,840.22	1,840.22	4,280,820.00	12/05/2022	20.30	21.29	19.78	20.75	20.75	-	12/5/2022	1,794.35	1,776.80	22.99	1,019	1,014	1,918	1,905	77.30	
Tue, Dec 6, 2022	12/06/2022	1,839.54	1,802.95	1,812.58	1,812.58	1,812.58	4,368,380.00	12/06/2022	20.69	22.60	20.38	22.17	22.17	-	12/6/2022	1,773.35	1,773.80	22.54	994	998	1,967	1,872	78.70	
Wed, Dec 7, 2022	12/07/2022	1,822.70	1,822.70	1,805.66	1,805.66	1,805.66	4,118,950.00	12/07/2022	22.32	23.01	22.18	22.68	22.68	-	12/7/2022	1,771.85	1,782.20	22.39	983	1003	1,848	1,842	79.62	
Thu, Dec 8, 2022	12/08/2022	1,815.71	1,833.75	1,808.85	1,818.29	1,818.29	4,006,900.00	12/08/2022	22.81	23.28	22.06	22.29	22.29	-	12/8/2022	1,782.45	1,790.15	22.70	1007	1004	1,856	1,859	78.62	
Fri, Dec 9, 2022	12/09/2022	1,812.15	1,815.81	1,796.66	1,796.66	1,796.66	3,868,260.00	12/09/2022	22.55	23.21	22.18	22.83	22.83	-	12/9/2022	1,793.00	1,796.15	23.11	1001	1001	1,929	1,923	77.72	
Mon, Dec 12, 2022	12/12/2022	1,798.79	1,820.50	1,793.11	1,818.61	1,818.61	3,904,130.00	12/12/2022	24.40	25.05	24.18	25.00	25.00	-	12/12/2022	1,790.60	1,786.60	23.39	1020	1006	1,929	1,895	76.38	
Tue, Dec 13, 2022	12/13/2022	1,851.83	1,880.76	1,823.00	1,832.36	1,832.36	5,079,360.00	12/13/2022	25.24	25.84	21.46	22.55	22.55	-	12/13/2022	1,785.15	1,823.55	23.40	1004	1037	1,894	1,952	77.95	
Wed, Dec 14, 2022	12/14/2022	1,831.23	1,845.77	1,812.30	1,820.45	1,820.45	4,472,340.00	12/14/2022	22.83	23.47	21.07	21.14	21.14	-	12/14/2022	1,808.20	1,808.05	23.61	1038	1025	1,929	1,919	76.58	
Thu, Dec 15, 2022	12/15/2022	1,806.74	1,806.74	1,770.56	1,774.61	1,774.61	4,493,900.00	12/15/2022	21.52	23.67	21.25	22.83	22.83	-	12/15/2022	1,775.95	1,783.55	23.17	1010	1014	1,873	1,895	76.99	
Fri, Dec 16, 2022	12/16/2022	1,759.55	1,765.84	1,746.25	1,763.42	1,763.42	4,322,000.00	12/16/2022	23.26	23.83	22.09	22.62	22.62	-	12/16/2022	1,780.15	1,792.55	22.83	992	997	1,798	1,730	78.52	
Mon, Dec 19, 2022	12/19/2022	1,763.94	1,765.54	1,733.62	1,738.58	1,738.58	3,969,610.00	12/19/2022	22.62	22.86	21.61	22.42	22.42	-	12/19/2022	1,796.50	1,790.80	23.24	1002	992	1,731	1,726	77.06	
Tue, Dec 20, 2022	12/20/2022	1,735.47	1,755.08	1,733.21	1,748.02	1,748.02	3,985,670.00	12/20/2022	23.17	23.39	21.35	21.48	21.48	-	12/20/2022	1,806.35	1,813.90	23.74	999	991	1,687	1,675	76.41	
Wed, Dec 21, 2022	12/21/2022	1,757.69	1,784.11	1,757.69	1,776.94	1,776.94	3,775,200.00	12/21/2022	21.25	21.29	19.94	20.07	20.07	-	12/21/2022	1,813.50	1,817.55	23.89	999	997	1,707	1,700	76.08	
Thu, Dec 22, 2022	12/22/2022	1,766.67	1,766.67	1,726.81	1,754.09	1,754.09	3,956,950.00	12/22/2022	20.08	24.30	20.01	21.97	21.97	-	12/22/2022	1,815.20	1,800.70	23.74	1005	984	1,723	1,692	75.87	
Fri, Dec 23, 2022	12/23/2022	1,753.20	1,761.24	1,743.74	1,760.93	1,760.93	2,819,280.00	12/23/2022	22.17	22.64	20.78	20.87	20.87	-	12/23/2022	1,797.40	-	23.74	995	984	1,658	-	-	
Tue, Dec 27, 2022	12/27/2022	1,761.38	1,761.65	1,745.44	1,749.52	1,749.52	3,036,300.00	12/27/2022	21.87	22.80	21.56	21.85	21.85	-	12/27/2022	-	-	-	-	-	-	-	-	-
Wed, Dec 28, 2022	12/28/2022	1,767.28	1,767.28	1,753.03	1,772.02	1,772.02	3,083,630.00	12/28/2022	22.17	22.47	20.99	21.47	21.47	-	12/28/2022	1,802.65	1,803.35	23.86	1,020	1,017	1,784	1,796	75.60	
Thu, Dec 29, 2022	12/29/2022	1,727.33	1,767.91	1,727.33	1,766.25	1,766.25	3,003,680.00	12/29/2022	22.25	22.31	21.36	21.44	21.44	-	12/29/2022	1,805.40	1,813.75	-	1014	1031	1,775	-	-	-
Fri, Dec 30, 2022	12/30/2022	1,759.26	1,763.93	1,747.23	1,761.25	1,761.25	2,979,870.00	12/30/2022	21.21	21.87	20.40	21.59	21.59	-	12/30/2022	1,812.35	-	23.95	1065	-	1,788	-	-	-
Mon, Jan 3, 2023	1/3/2023	1,769.75	1,785.95	1,737.26	1,750.73	1,750.73	3,959,140.00	1/3/2023	23.09	23.76	22.73	22.90	22.90	-	1/3/2023	1,835.05	1,843.25	24.30	1086	1082	1,804	1,795	75.87	
Wed, Jan 4, 2023	1/4/2023	1,758.09	1,781.97	1,758.09	1,772.54	1,772.54	4,414,080.00	1/4/2023	22.93	23.27	21.94	22.01	22.01	-	1/4/2023	1,857.55	1,857.30	24.29	1093	1080	1,802	1,722	73.66	
Thu, Jan 5, 2023	1/5/2023	1,765.08	1,765.08	1,745.38	1,753.19	1,753.19	3,893,450.00	1/5/2023	22.20	22.92	21.97	22.46	22.46	-	1/5/2023	1,850.25	1,834.00	23.41	1020	1062	1,683	1,783	78.34	
Mon, Jan 9, 2023	1/9/2023	1,763.53	1,765.95	1,758.56	1,762.99	1,762.99	3,992,560.00	1/9/2023	22.89	22.89	21.61	21.13	21.13	-	1/9/2023	1,834.50	1,852.20	23.46	1048	1053	1,744	1,787	78.65	
Thu, Jan 12, 2023	1/12/2023	1,801.07	1,817.09	1,794.54	1,795.91	1,795.91	4,311,770.00	1/12/2023	21.97	21.97	21.97	21.97	21.97	-	1/12/2023	1,873.80	1,878.85	23.85	1098	1022	1,680	1,793	78.78	
Mon, Jan 16, 2023	1/16/2023	1,794.29	1,822.65	1,793.19	1,822.65	1,822.65	3,851,030.00	1/16/2023	22.22	22.46	20.58	20.58	20.58	-	1/16/2023	1,875.20	1,878.65	23.52	1084	1084	1,783	1,802	79.89	
Wed, Jan 11, 2023	1/11/2023	1,827.12	1,844.16	1,826.52	1,844.05	1,844.05	4,303,360.00	1/11/2023	20.80	21.25	20.62	21.09	21.09	-	1/11/2023	1,884.25	1,872.35	23.87	1096	1100	1,788	1,764	78.44	
Thu, Jan 12, 2023	1/12/2023	1,850.25	1,876.06	1,839.09	1,876.06	1,876.06	4,440,260.00	1/12/2023	21.56	21.80	18.83	18.83	18.83	-	1/12/2023	1,883.10	1,882.55	23.70	1074	1082	1,781	1,777	79.43	
Fri, Jan 13, 2023	1/13/2023	1,861.74	1,861.74	1,845.36	1,861.74	1,861.74	4,370,720.00	1/13/2023	19.85	20.22	19.21	19.36	19.36	-	1/13/2023	1,907.15	1,907.15	23.68	1045	1037	1,730	1,722	79.43	
Mon, Jan 17, 2023	1/17/2023	1,882.44	1,882.44	1,880.74	1,884.29	1,884.29	4,235,560.00	1/17/2023	19.89	20.22	19.21	19.36	19.36	-	1/17/2023	1,904.95	1,913.80	24.10	1057	1053	1,789	1,728	79.41	
Wed, Jan 18, 2023	1/18/2023	1,890.09	1,903.87	1,854.32	1,854.36	1,854.36	4,298,710.00	1/18/2023	19.28	20.58	18.71	20.34	20.34	-	1/18/2023	1,911.55	1,920.70	24.19	1045	1068	1,752	1,778	79.42	
Thu, Jan 19, 2023	1/19/2023	1,846.35	1,846.35	1,825.58	1,836.35	1,836.35	3,991,500.00	1/19/2023	20.43	21.71	20.17	20.52	20.52	-	1/19/2023	1,907.50	1,918.60	23.45	1029	1025	1,703	1,683	81.83	
Mon, Jan 20, 2023	1/20/2023	1,867.34	1,867.34	1,836.63	1,867.34	1,867.34	4,013,360.00	1/20/2023	20.21	20.30	19.41	19.85	19.85	-	1/20/2023	1,928.75	1,924.90	23.87	1036	1024	1,735	1,731	80.64	
Fri, Jan 23, 2023	1/23/2023	1,889.38	1,896.20	1,867.49	1,890.77	1,890.77	3,945,210.00	1/23/2023	20.21	20.33	19.55	19.81	19.81	-	1/23/2023	1,927.20	1,914.85	23.68	1045	1037	1,730	1,708	80.88	
Mon, Jan 24, 2023	1/24/2023	1,878.53	1,885.61	1,878.53	1,885.61	1,885.61	4,029,620.00	1/24/2023	20.89	20.89	20.89	20.89	20.89	-	1/24/2023	1,936.50	1,920.75	23.71	1047	1047	1,683	1,683	81.72	
Wed, Jan 25, 2023	1/25/2023	1,873.62	1,880.73	1,858.98	1,880.32	1,880.32	3,724,020.00	1/25/2023	19.96	20.90	18.99	19.08	19.08	-	1/25/2023	1,925.85	1,930.80	23.43	1049	1039	1,729	1,732	82.41	
Thu, Jan 26, 2023	1/26/2023	1,899.88	1,909.42	1,882.71	1,903.06	1,903.06	3,809,590.00	1/26/2023	19.05	19.48	18.67	19.03	19.03	-	1/26/2023	1,936.45	1,932.45	23.71	1031	1032	1,682	1,697	81.50	
Fri, Jan 27, 2023	1/27/2023	1,899.82	1,918.59	1,896.24	1,911.46	1,911.46																		

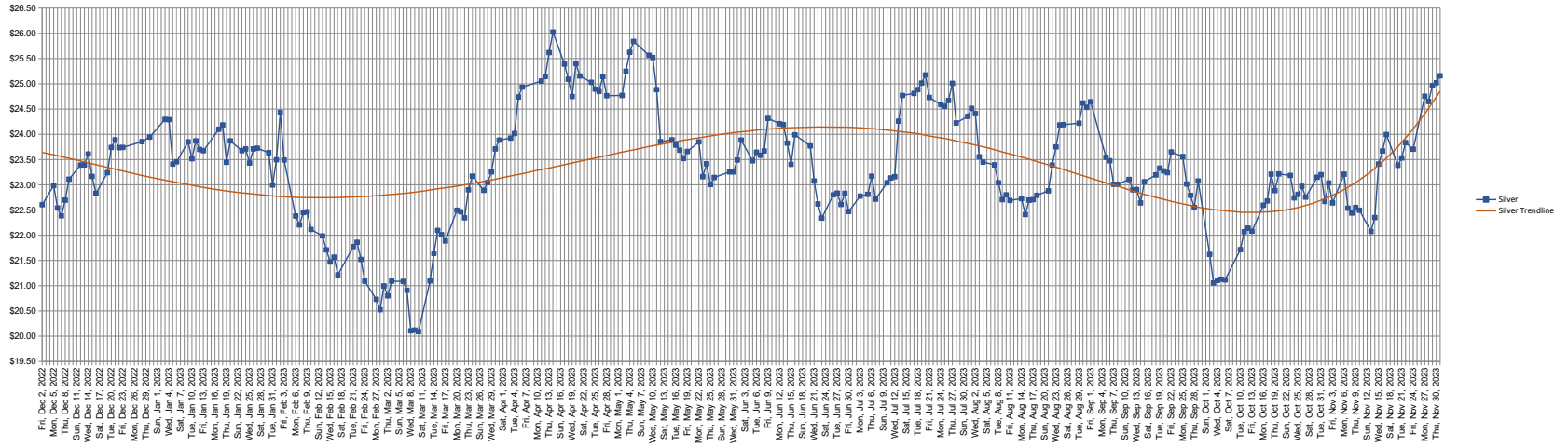
Wed, Apr 19, 2023	4/19/2023	1,789.99	1,802.79	1,782.72	1,799.44	1,799.44	3,572,560,000	4/19/2023	17.30	17.72	16.17	16.46	16.46	-	4/19/2023	1976.10	1990.55	24.75	1062	1075	1620	1609	80.43
Thu, Apr 20, 2023	4/20/2023	1,790.69	1,797.47	1,782.35	1,789.70	1,789.70	3,772,080,000	4/20/2023	16.85	17.69	16.33	17.17	17.17	-	4/20/2023	1994.05	2007.15	25.40	1085	1094	1601	1618	79.02
Fri, Apr 21, 2023	4/21/2023	1,790.36	1,793.31	1,777.40	1,791.51	1,791.51	3,611,750,000	4/21/2023	17.15	17.71	16.58	16.77	16.77	-	4/21/2023	1986.10	1973.55	25.18	1094	1128	1593	1628	78.46
Mon, Apr 24, 2023	4/24/2023	1,790.25	1,797.61	1,781.97	1,798.91	1,788.87	3,209,840,000	4/24/2023	18.22	18.22	18.22	18.22	18.22	-	4/24/2023	1978.25	1985.03	25.03	1106	1081	1590	1545	79.03
Tue, Apr 25, 2023	4/25/2023	1,779.33	1,779.33	1,745.91	1,745.95	1,745.95	3,978,640,000	4/25/2023	17.62	19.86	17.33	18.76	18.76	-	4/25/2023	1990.20	1987.40	24.90	1080	1080	1502	1494	79.83
Wed, Apr 26, 2023	4/26/2023	1,747.29	1,747.28	1,725.82	1,730.41	1,730.41	3,837,030,000	4/26/2023	18.66	19.61	17.87	18.84	18.84	-	4/26/2023	1999.05	2003.00	24.85	1101	1093	1504	1509	80.60
Thu, Apr 27, 2023	4/27/2023	1,733.40	1,752.00	1,726.77	1,751.22	1,751.22	3,750,550,000	4/27/2023	18.43	18.43	16.72	17.03	17.03	-	4/27/2023	1997.65	1985.65	25.15	1098	1085	1519	1496	78.97
Fri, Apr 28, 2023	4/28/2023	1,749.89	1,773.02	1,746.84	1,768.99	1,768.99	4,087,800,000	4/28/2023	17.21	17.65	15.72	15.78	15.78	-	4/28/2023	1982.70	1982.55	24.77	1067	1074	1490	1497	80.05
Mon, May 1, 2023	5/1/2023	1,785.45	1,785.45	1,764.34	1,785.45	1,785.45	3,370,000	5/1/2023	16.41	16.41	16.41	16.41	16.41	-	5/1/2023	1987.30	1987.30	24.85	1076	1076	1493	1493	80.08
Tue, May 2, 2023	5/2/2023	1,761.15	1,761.15	1,716.22	1,732.11	1,732.11	4,486,130,000	5/2/2023	16.27	19.81	16.26	17.78	17.78	-	5/2/2023	1980.90	1995.40	24.77	1051	1049	1459	1453	80.56
Wed, May 3, 2023	5/3/2023	1,735.69	1,767.70	1,735.69	1,739.28	1,739.28	4,246,510,000	5/3/2023	17.82	18.83	17.19	18.34	18.34	-	5/3/2023	2016.90	2014.30	25.25	1070	1060	1466	1441	79.77
Thu, May 4, 2023	5/4/2023	1,727.24	1,728.39	1,704.82	1,718.81	1,718.81	4,920,090,000	5/4/2023	19.17	21.33	18.67	20.09	20.09	-	5/4/2023	2036.05	2044.70	25.63	1049	1053	1433	1428	79.79
Fri, May 5, 2023	5/5/2023	1,742.52	1,763.78	1,742.52	1,759.88	1,759.88	4,186,270,000	5/5/2023	19.50	19.63	16.69	17.19	17.19	-	5/5/2023	2038.90	2000.95	25.84	1043	1044	1453	1455	77.44
Mon, May 8, 2023	5/8/2023	1,766.42	1,769.21	1,748.32	1,754.47	1,754.47	3,641,640,000	5/8/2023	17.73	17.88	16.83	16.98	16.98	-	5/8/2023	2025.60	2030.20	25.57	1072	1083	1538	1570	79.41
Tue, May 9, 2023	5/9/2023	1,747.44	1,756.09	1,737.70	1,749.68	1,749.68	3,810,140,000	5/9/2023	17.29	17.86	17.22	17.71	17.71	-	5/9/2023	2029.60	2037.15	25.52	1103	1125	1578	1620	79.83
Thu, May 11, 2023	5/11/2023	1,748.89	1,749.44	1,736.84	1,744.71	1,744.71	3,752,900,000	5/11/2023	16.83	18.19	16.63	16.93	16.93	-	5/11/2023	2025.75	2015.95	24.89	1104	1119	1571	1607	81.01
Fri, May 12, 2023	5/12/2023	1,748.14	1,753.23	1,731.34	1,740.85	1,740.85	3,533,740,000	5/12/2023	16.80	17.92	16.38	17.03	17.03	-	5/12/2023	2006.65	2019.90	23.86	1099	1081	1573	1546	84.67
Mon, May 15, 2023	5/15/2023	1,744.66	1,768.75	1,744.21	1,761.55	1,761.55	3,562,170,000	5/15/2023	17.44	18.16	17.08	17.12	17.12	-	5/15/2023	2015.30	2019.90	23.89	1063	1061	1532	1534	84.55
Tue, May 16, 2023	5/16/2023	1,755.16	1,755.16	1,736.16	1,736.16	1,736.16	3,654,200,000	5/16/2023	17.54	18.30	17.26	17.99	17.99	-	5/16/2023	2009.90	2007.45	23.79	1070	1070	1528	1521	84.40
Wed, May 17, 2023	5/17/2023	1,744.11	1,776.90	1,737.39	1,774.59	1,774.59	4,039,080,000	5/17/2023	17.96	18.26	16.88	18.87	18.87	-	5/17/2023	1985.75	1974.40	23.69	1068	1075	1493	1480	83.66
Thu, May 18, 2023	5/18/2023	1,770.82	1,787.36	1,766.29	1,784.86	1,784.86	3,980,500,000	5/18/2023	16.92	17.15	16.05	16.05	16.05	-	5/18/2023	1976.95	1960.30	23.52	1065	1067	1463	1464	83.35
Fri, May 19, 2023	5/19/2023	1,795.99	1,800.52	1,769.02	1,773.72	1,773.72	4,041,900,000	5/19/2023	16.13	17.36	15.85	16.81	16.81	-	5/19/2023	1965.55	1961.60	23.66	1058	1071	1473	1518	82.91
Mon, May 22, 2023	5/22/2023	1,777.64	1,801.39	1,776.96	1,795.38	1,795.38	3,728,520,000	5/22/2023	17.45	18.13	16.82	17.21	17.21	-	5/22/2023	1981.20	1970.30	23.85	1074	1074	1517	1513	82.61
Tue, May 23, 2023	5/23/2023	1,792.33	1,816.40	1,787.52	1,787.71	1,787.71	4,155,320,000	5/23/2023	17.35	19.31	17.80	18.53	18.53	-	5/23/2023	1959.65	1969.20	23.16	1061	1066	1467	1460	85.03
Wed, May 24, 2023	5/24/2023	1,793.53	1,816.40	1,761.20	1,767.90	1,767.90	4,391,860,000	5/24/2023	18.80	20.81	18.30	20.03	20.03	-	5/24/2023	1976.80	1969.65	23.42	1046	1042	1425	1425	84.12
Thu, May 25, 2023	5/25/2023	1,767.35	1,787.93	1,761.20	1,774.60	1,774.60	4,147,760,000	5/25/2023	18.07	19.54	18.70	18.70	18.70	-	5/25/2023	1948.25	1948.25	23.01	1026	1026	1434	1444	84.25
Fri, May 26, 2023	5/26/2023	1,755.36	1,774.69	1,755.29	1,773.02	1,773.02	3,715,460,000	5/26/2023	19.76	20.56	17.27	17.96	17.96	-	5/26/2023	1953.50	1947.90	23.15	1049	1025	1435	1442	84.16
Tue, May 30, 2023	5/30/2023	1,776.61	1,784.71	1,761.35	1,767.29	1,767.29	4,228,510,000	5/30/2023	17.56	18.34	16.96	17.46	17.46	-	5/30/2023	1949.50	1952.45	23.26	1034	1027	1437	1417	83.96
Wed, May 31, 2023	5/31/2023	1,761.33	1,765.41	1,736.82	1,749.65	1,749.65	5,980,670,000	5/31/2023	18.40	18.40	17.12	17.94	17.94	-	5/31/2023	1959.00	1964.40	23.26	1017	1033	1497	1390	84.47
Thu, Jun 1, 2023	6/1/2023	1,750.89	1,773.01	1,744.37	1,767.94	1,767.94	4,391,860,000	6/1/2023	17.24	17.59	15.58	15.65	15.65	-	6/1/2023	1958.75	1974.35	23.49	1005	1004	1499	1372	84.05
Fri, Jun 2, 2023	6/2/2023	1,751.11	1,762.34	1,731.11	1,751.11	1,751.11	4,391,860,000	6/2/2023	16.51	17.83	16.06	16.51	16.51	-	6/2/2023	1951.00	1963.25	23.49	1006	1016	1493	1425	84.12
Mon, Jun 5, 2023	6/5/2023	1,825.77	1,825.77	1,797.27	1,806.71	1,806.71	3,913,280,000	6/5/2023	15.28	19.29	14.86	14.73	14.73	-	6/5/2023	1942.50	1959.65	23.48	1008	1017	1425	1410	83.45
Tue, Jun 6, 2023	6/6/2023	1,804.67	1,859.39	1,801.60	1,855.40	1,855.40	3,996,560,000	6/6/2023	14.91	14.97	13.95	13.96	13.96	-	6/6/2023	1961.90	1957.25	23.65	1026	1028	1408	1407	82.78
Wed, Jun 7, 2023	6/7/2023	1,861.20	1,893.56	1,861.20	1,888.45	1,888.45	4,537,800,000	6/7/2023	14.14	14.29	13.77	13.94	13.94	-	6/7/2023	1963.05	1967.35	23.59	1042	1035	1417	1411	83.42
Thu, Jun 8, 2023	6/8/2023	1,886.03	1,886.03	1,867.91	1,880.78	1,880.78	3,826,740,000	6/8/2023	14.14	14.21	13.53	13.65	13.65	-	6/8/2023	1947.25	1966.40	23.67	1026	1020	1381	1381	83.08
Fri, Jun 9, 2023	6/9/2023	1,881.27	1,881.74	1,862.50	1,865.71	1,865.71	3,786,510,000	6/9/2023	13.78	14.14	13.53	13.83	13.83	-	6/9/2023	1963.55	1960.30	24.32	1013	1001	1351	1324	80.82
Mon, Jun 12, 2023	6/12/2023	1,899.47	1,893.05	1,868.10	1,863.10	1,863.10	3,598,240,000	6/12/2023	14.42	14.42	13.32	13.48	13.48	-	6/12/2023	1954.15	1952.90	24.21	1008	993	1328	1270	83.68
Tue, Jun 13, 2023	6/13/2023	1,878.09	1,903.00	1,878.09	1,896.33	1,896.33	4,275,400,000	6/13/2023	14.99	15.06	14.47	14.61	14.61	-	6/13/2023	1964.00	1954.40	24.19	993	992	1343	1372	80.79
Wed, Jun 14, 2023	6/14/2023	1,896.74	1,904.92	1,864.08	1,874.10	1,874.10	4,252,110,000	6/14/2023	14.48	14.73	13.83	13.88	13.88	-	6/14/2023	1951.90	1955.80	23.83	982	978	1362	1395	82.09
Thu, Jun 15, 2023	6/15/2023	1,870.17	1,890.09	1,866.26	1,889.28	1,889.28	4,176,690,000	6/15/2023	14.09	14.52	13.79	14.00	14.00	-	6/15/2023	1934.65	1952.35	23.41	967	979	1377	1368	83.42
Fri, Jun 16, 2023	6/16/2023	1,900.12	1,906.83	1,868.65	1,875.47	1,875.47	6,848,600,000	6/16/2023	14.49	14.54	13.48	13.54	13.54	-	6/16/2023	1964.10	1959.75	23.99	993	987	1391	1398	81.69
Tue, Jun 20, 2023	6/20/2023	1,871.49	1,871.49	1,856.20	1,866.70	1,866.70	4,055,790,000	6/20/2023	14.36	14.67	13.86	13.88	13.88	-	6/20/2023	1953.95	1930.45	23.77	972	964	1402	1398	81.21
Wed, Jun 21, 2023	6/21/2023	1,843.16	1,879.90	1,843.16	1,864.96	1,864.96	3,630,480,000	6/21/2023	13.89	13.98	13.09	13.28	13.28	-	6/21/2023	1935.20	1925.65	23.08	945	945	1343	1343	83.45
Thu, Jun 22, 2023	6/22/2023	1,860.03	1,860.03	1,843.92	1,848.18	1,848.18	3,511,000,000	6/22/2023	13.88	13.88	12.73	12.91	12.91	-	6/22/2023	1927.95	1920.05	22.62	943	938	1335	1319	84.88
Fri, Jun 23, 2																							

Wed, Sep 13, 2023	9/13/2023	1,855.25	1,857.00	1,837.56	1,840.84	1,840.84	3,529,430,000	9/13/2023	14.42	14.68	13.41	13.48	13.48	-	9/13/2023	1912.15	1913.80	22.91	906	901	1233	1234	83.55
Thu, Sep 14, 2023	9/14/2023	1,855.30	1,868.17	1,854.37	1,866.63	1,866.63	3,648,720,000	9/14/2023	13.99	13.46	12.79	12.82	12.82	-	9/14/2023	1906.45	1901.75	22.64	901	903	1260	1259	84.00
Fri, Sep 15, 2023	9/15/2023	1,861.56	1,861.68	1,840.00	1,847.03	1,847.03	3,932,230,000	9/15/2023	12.70	14.17	12.86	13.79	13.79	-	9/15/2023	1918.70	1927.70	23.06	917	907	1261	1270	83.59
Mon, Sep 18, 2023	9/18/2023	1,847.71	1,847.71	1,834.30	1,834.30	1,834.30	3,161,230,000	9/18/2023	14.40	14.75	13.96	14.00	14.00	-	9/18/2023	1926.40	1923.50	23.20	933	935	1263	1247	82.93
Tue, Sep 19, 2023	9/19/2023	1,834.39	1,840.56	1,823.05	1,826.53	1,826.53	3,614,880,000	9/19/2023	14.11	14.88	13.86	14.11	14.11	-	9/19/2023	1935.00	1934.90	23.33	939	948	1252	1272	82.94
Wed, Sep 20, 2023	9/20/2023	1,834.44	1,843.50	1,810.08	1,810.10	1,810.10	3,308,450,000	9/20/2023	14.18	15.15	13.57	15.14	15.14	-	9/20/2023	1930.15	1943.35	23.28	945	943	1277	1292	83.50
Thu, Sep 21, 2023	9/21/2023	1,795.22	1,795.80	1,781.82	1,781.83	1,781.83	3,662,340,000	9/21/2023	15.49	17.54	15.10	17.54	17.54	-	9/21/2023	1923.40	1915.00	23.24	920	917	1253	1242	82.40
Fri, Sep 22, 2023	9/22/2023	1,787.52	1,791.14	1,776.50	1,776.50	1,776.50	3,348,570,000	9/22/2023	17.31	17.41	15.93	17.20	17.20	-	9/22/2023	1926.20	1927.35	23.65	934	940	1270	1275	81.49
Mon, Sep 25, 2023	9/25/2023	1,768.67	1,768.03	1,758.54	1,758.94	1,758.94	3,195,830,000	9/25/2023	17.25	18.41	16.78	17.25	17.25	-	9/25/2023	1922.55	1924.85	22.56	921	909	1241	1241	81.74
Tue, Sep 26, 2023	9/26/2023	1,774.64	1,786.05	1,761.61	1,761.61	1,761.61	3,472,340,000	9/26/2023	18.03	19.50	17.17	18.94	18.94	-	9/26/2023	1912.30	1907.05	23.02	909	906	1223	1213	82.86
Wed, Sep 27, 2023	9/27/2023	1,771.16	1,786.60	1,765.64	1,778.90	1,778.90	3,875,880,000	9/27/2023	18.22	19.71	18.03	18.22	18.22	-	9/27/2023	1895.55	1887.30	22.79	906	905	1236	1241	82.81
Thu, Sep 28, 2023	9/28/2023	1,778.03	1,802.61	1,777.89	1,794.31	1,794.31	3,846,230,000	9/28/2023	18.22	18.77	17.06	17.34	17.34	-	9/28/2023	1874.10	1873.55	22.55	891	901	1225	1245	83.08
Fri, Sep 29, 2023	9/29/2023	1,805.47	1,809.69	1,781.05	1,785.10	1,785.10	3,865,960,000	9/29/2023	16.87	17.74	15.83	17.52	17.52	-	9/29/2023	1871.60	1870.50	23.08	918	923	1270	1289	81.06
Mon, Oct 2, 2023	10/2/2023	1,780.86	1,782.02	1,749.43	1,756.82	1,756.82	3,938,660,000	10/2/2023	17.31	18.55	16.93	17.61	17.61	-	10/2/2023	1831.85	1833.05	21.62	906	901	1242	1214	84.78
Tue, Oct 3, 2023	10/3/2023	1,749.19	1,749.19	1,721.48	1,727.15	1,727.15	3,953,830,000	10/3/2023	17.21	20.48	17.52	19.78	19.78	-	10/3/2023	1828.30	1822.45	21.06	893	881	1207	1183	86.56
Wed, Oct 4, 2023	10/4/2023	1,727.09	1,731.23	1,709.59	1,729.01	1,729.01	3,777,600,000	10/4/2023	20.72	20.88	18.30	18.58	18.58	-	10/4/2023	1823.25	1818.95	21.11	871	874	1168	1177	86.19
Thu, Oct 5, 2023	10/5/2023	1,724.69	1,734.31	1,717.34	1,731.51	1,731.51	3,581,470,000	10/5/2023	18.67	19.58	18.26	18.49	18.49	-	10/5/2023	1822.75	1819.45	21.13	868	864	1168	1157	86.11
Fri, Oct 6, 2023	10/6/2023	1,723.71	1,754.25	1,713.92	1,745.56	1,745.56	3,902,030,000	10/6/2023	18.73	19.93	17.19	17.45	17.45	-	10/6/2023	1821.90	1819.60	21.12	859	858	1145	1146	86.18
Tue, Oct 10, 2023	10/10/2023	1,759.52	1,785.89	1,759.52	1,775.95	1,775.95	3,520,240,000	10/10/2023	17.70	17.86	16.51	17.03	17.03	-	10/10/2023	1859.70	1857.00	21.72	891	886	1140	1129	85.52
Wed, Oct 11, 2023	10/11/2023	1,777.57	1,786.64	1,761.81	1,773.30	1,773.30	3,601,660,000	10/11/2023	16.95	17.78	16.09	16.99	16.99	-	10/11/2023	1870.00	1871.25	22.07	897	880	1182	1162	84.79
Thu, Oct 12, 2023	10/12/2023	1,774.34	1,774.92	1,726.44	1,734.25	1,734.25	3,713,140,000	10/12/2023	16.08	18.06	15.44	16.69	16.69	-	10/12/2023	1881.15	1874.00	22.14	893	883	1165	1164	84.64
Fri, Oct 13, 2023	10/13/2023	1,738.09	1,740.57	1,715.32	1,719.71	1,719.71		10/13/2023	16.53	20.78	16.50	19.32	19.32	-	10/13/2023	1887.00	1909.20	22.08	871	881	1143	1141	86.47
Mon, Oct 16, 2023	10/16/2023	1,734.13	1,749.21	1,728.18	1,747.06	1,747.06	3,409,960,000	10/16/2023	19.10	19.57	17.14	17.21	17.21	-	10/16/2023	1914.65	1918.05	22.60	885	883	1151	1135	84.89
Tue, Oct 17, 2023	10/17/2023	1,735.75	1,779.85	1,735.71	1,766.05	1,766.05	3,794,850,000	10/17/2023	17.41	18.54	16.97	17.88	17.88	-	10/17/2023	1923.45	1928.20	22.68	895	895	1132	1135	85.02
Wed, Oct 18, 2023	10/18/2023	1,752.92	1,752.92	1,727.24	1,728.81	1,728.81	3,686,030,000	10/18/2023	18.36	20.15	17.88	19.22	19.22	-	10/18/2023	1943.85	1955.70	23.21	908	898	1143	1130	84.26
Thu, Oct 19, 2023	10/19/2023	1,725.70	1,734.58	1,700.24	1,702.70	1,702.70	3,969,730,000	10/19/2023	19.73	21.40	18.55	21.40	21.40	-	10/19/2023	1948.65	1953.55	22.89	882	886	1103	1107	85.39
Fri, Oct 20, 2023	10/20/2023	1,705.55	1,706.02	1,680.79	1,680.79	1,680.79	4,004,030,000	10/20/2023	21.59	21.33	20.42	21.71	21.71	-	10/20/2023	1984.20	1988.50	23.22	903	895	1153	1101	85.66
Mon, Oct 23, 2023	10/23/2023	1,671.76	1,687.74	1,662.64	1,665.88	1,665.88	3,776,100,000	10/23/2023	21.83	23.08	19.48	20.37	20.37	-	10/23/2023	1980.95	1973.00	23.19	897	898	1091	1113	85.10
Tue, Oct 24, 2023	10/24/2023	1,677.74	1,690.41	1,671.27	1,679.50	1,679.50	3,821,820,000	10/24/2023	20.03	20.24	18.65	18.97	18.97	-	10/24/2023	1967.40	1963.65	22.74	893	887	1124	1120	86.35
Wed, Oct 25, 2023	10/25/2023	1,666.84	1,668.17	1,649.85	1,651.43	1,651.43	3,869,370,000	10/25/2023	19.39	21.24	18.86	20.19	20.19	-	10/25/2023	1970.15	1983.30	22.81	884	896	1116	1136	86.95
Thu, Oct 26, 2023	10/26/2023	1,656.61	1,670.09	1,648.83	1,657.00	1,657.00	4,277,640,000	10/26/2023	21.78	21.96	20.22	20.68	20.68	-	10/26/2023	1991.45	1975.00	22.97	907	912	1122	1123	85.98
Mon, Oct 30, 2023	10/30/2023	1,653.67	1,661.19	1,633.67	1,636.94	1,636.94	4,069,440,000	10/30/2023	20.39	22.07	19.72	21.27	21.27	-	10/30/2023	1992.90	1992.90	22.76	899	903	1135	1129	85.51
Mon, Oct 30, 2023	10/30/2023	1,646.36	1,657.32	1,635.41	1,647.29	1,647.29	3,911,140,000	10/30/2023	21.13	21.16	19.55	19.75	19.75	-	10/30/2023	1996.15	1997.60	23.15	917	927	1137	1146	86.29
Tue, Oct 31, 2023	10/31/2023	1,646.60	1,663.50	1,644.99	1,662.28	1,662.28	4,249,470,000	10/31/2023	19.86	19.86	17.97	18.14	18.14	-	10/31/2023	1997.60	1996.90	23.20	937	940	1127	1136	86.07
Wed, Nov 1, 2023	11/1/2023	1,661.41	1,669.79	1,649.06	1,669.70	1,669.70	4,224,900,000	11/1/2023	18.02	18.42	16.63	16.87	16.87	-	11/1/2023	1982.50	1986.35	22.67	925	929	1121	1129	87.62
Thu, Nov 2, 2023	11/2/2023	1,684.45	1,714.61	1,684.45	1,714.21	1,714.21	4,669,780,000	11/2/2023	16.59	16.62	15.58	15.66	15.66	-	11/2/2023	1986.70	1983.60	23.04	930	921	1107	1117	86.11
Fri, Nov 3, 2023	11/3/2023	1,733.61	1,770.58	1,733.61	1,760.70	1,760.70	4,570,960,000	11/3/2023	15.70	15.83	14.91	14.91	14.91	-	11/3/2023	1988.50	1994.45	22.64	914	931	1116	1110	88.09
Mon, Nov 6, 2023	11/6/2023	1,760.74	1,760.86	1,731.68	1,737.94	1,737.94	3,856,340,000	11/6/2023	15.99	15.58	14.84	14.89	14.89	-	11/6/2023	1987.10	1994.60	23.21	932	927	1129	1123	85.51
Tue, Nov 7, 2023	11/7/2023	1,733.73	1,739.29	1,723.55	1,733.15	1,733.15	3,791,230,000	11/7/2023	15.10	15.17	14.71	14.81	14.81	-	11/7/2023	1967.80	1960.70	22.54	900	899	1089	1070	87.01
Wed, Nov 8, 2023	11/8/2023	1,732.96	1,733.11	1,709.24	1,714.07	1,714.07	3,728,510,000	11/8/2023	14.91	15.09	14.30	14.45	14.45	-	11/8/2023	1960.10	1959.35	22.44	884	880	1018	1016	87.32
Thu, Nov 9, 2023	11/9/2023	1,720.70	1,724.83	1,685.27	1,687.24	1,687.24	3,900,780,000	11/9/2023	14.61	15.57	14.13	15.29	15.29	-	11/9/2023	1946.75	1957.45	22.55	865	880	1027	1025	86.80
Fri, Nov 10, 2023	11/10/2023	1,692.77	1,709.24	1,684.20	1,705.32	1,705.32	3,665,080,000	11/10/2023	15.09	15.45	14.16	14.17	14.17	-	11/10/2023	1953.45	1941.65	22.50	855	853	960	970	86.31
Mon, Nov 13, 2023	11/13/2023	1,698.74	1,709.57	1,690.92	1,705.50	1,705.50	3,326,240,000	11/13/2023	15.16	15.19	14.58	14.76	14.76	-	11/13/2023	1937.45	1931.15	22.08	852	850	972	963	87.48
Tue, Nov 14, 2023	11/14/2023	1,741.74	1,738.32	1,741.74	1,738.32	1,738.32	4,700,350,000	11/14/2023	14.83	14.86	13.91	14.16	14.16	-	11/14/2023	1946.55	1969.05	22.35	874	877	986	1000	88.10

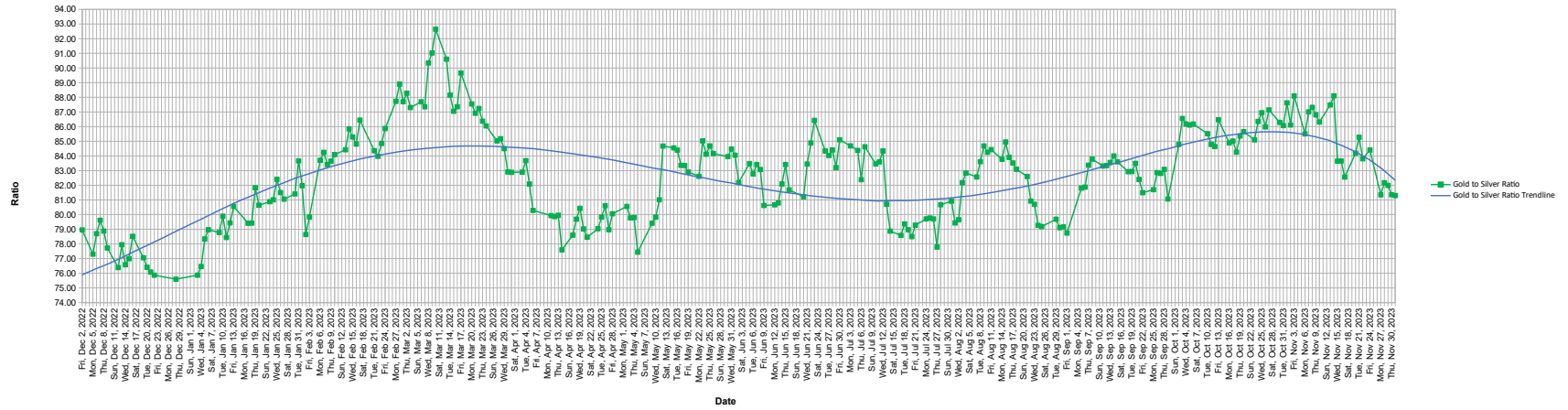
Russell 2000, Gold, Platinum & Palladium



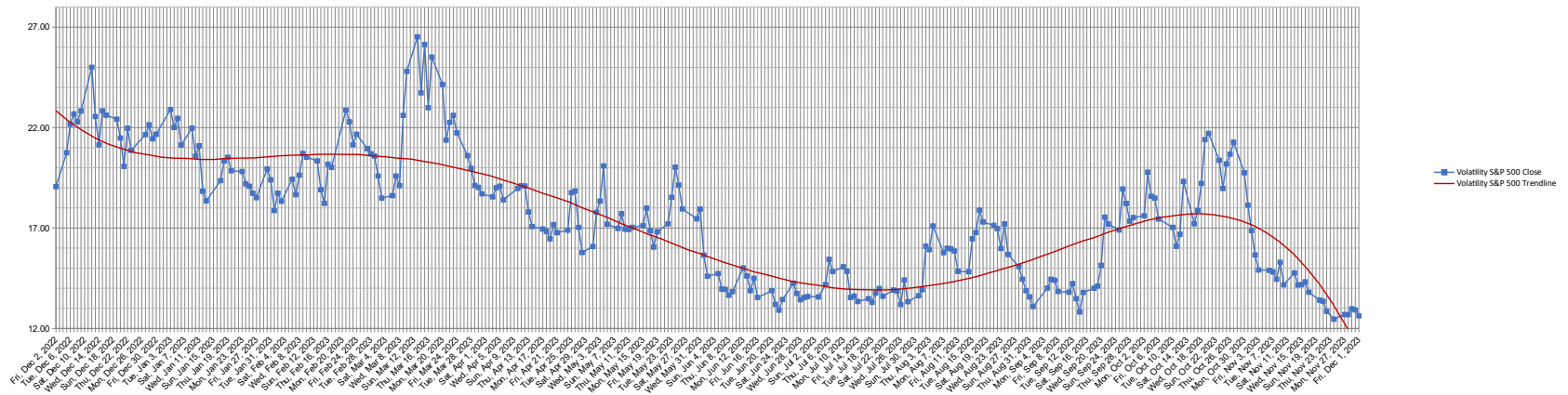
Silver



Gold to Silver Ratio



Volatility S&P 500



TSP Raw Data															
Date	L Income	L 2025	L 2030	L 2035	L 2040	L 2045	L 2050	L 2055	L 2060	L 2065	G Fund	F Fund	C Fund	S Fund	I Fund
12/01/23	24.5204	12.4608	43.8906	13.1162	49.4234	13.4744	29.4173	14.4541	14.4524	14.4504	17.8963	18.6929	71.5592	71.5764	38.4578
11/30/23	24.4482	12.4124	43.6175	13.0264	49.0562	13.3671	29.1694	14.3175	14.3157	14.3137	17.8939	18.5331	71.1354	69.8017	38.1279
11/29/23	24.4347	12.4026	43.5559	13.0065	48.9749	13.3435	29.1140	14.2803	14.2786	14.2766	17.8914	18.6015	70.8461	69.4755	38.1380
11/28/23	24.4176	12.3923	43.5075	12.9906	48.9102	13.3246	29.0712	14.2617	14.2599	14.2579	17.8890	18.5010	70.9014	68.8451	38.0913
11/27/23	24.4062	12.3858	43.4791	12.9813	48.8736	13.3141	29.0479	14.2527	14.2508	14.2487	17.8866	18.4329	70.8323	68.9552	38.0537
11/24/23	24.4048	12.3880	43.5144	12.9932	48.9246	13.3294	29.0852	14.2822	14.2803	14.2782	17.8792	18.3319	70.9698	69.0654	38.1256
11/22/23	24.3817	12.3722	43.4211	12.9631	48.8017	13.2937	29.0020	14.2293	14.2274	14.2253	17.8743	18.3923	70.9262	68.6717	37.8638
11/21/23	24.3583	12.3564	43.3307	12.9336	48.6815	13.2588	28.9210	14.1819	14.1801	14.1780	17.8718	18.3841	70.6360	68.2231	37.8250
11/20/23	24.3755	12.3694	43.4143	12.9612	48.7953	13.2922	28.9992	14.2296	14.2278	14.2257	17.8694	18.3682	70.7779	68.7254	37.9722
11/17/23	24.3253	12.3364	43.2315	12.9018	48.5543	13.2224	28.8382	14.1370	14.1352	14.1331	17.8620	18.3358	70.2515	68.2675	37.7726
11/16/23	24.2813	12.3063	43.0573	12.8448	48.3214	13.1545	28.6808	14.0458	14.0439	14.0418	17.8596	18.3065	70.1602	67.5634	37.2970
11/15/23	24.2799	12.3073	43.0775	12.8516	48.3508	13.1635	28.7034	14.0660	14.0641	14.0619	17.8572	18.2064	70.0608	68.3315	37.3664
11/14/23	24.2769	12.3045	43.0547	12.8445	48.3215	13.1551	28.6828	14.0474	14.0455	14.0434	17.8547	18.3099	69.9367	68.1010	37.3679
11/13/23	24.1068	12.1883	42.3846	12.6250	47.4255	12.8942	28.0796	13.7048	13.7028	13.7007	17.8523	18.0954	68.6141	65.2409	36.4041
11/10/23	24.0980	12.1840	42.3715	12.6212	47.4117	12.8905	28.0717	13.7013	13.6993	13.6972	17.8449	18.0891	68.6674	65.2391	36.3361
11/09/23	24.0325	12.1391	42.1096	12.5359	47.0638	12.7895	27.8382	13.5651	13.5632	13.5610	17.8425	18.0669	67.6016	64.4925	36.2846
11/08/23	24.0714	12.1653	42.2560	12.5842	47.2611	12.8471	27.9706	13.6345	13.6326	13.6305	17.8401	18.2077	68.1398	65.3721	36.2022
11/07/23	24.0689	12.1649	42.2640	12.5869	47.2736	12.8510	27.9807	13.6446	13.6427	13.6406	17.8377	18.1480	68.0685	65.7768	36.2489
11/06/23	24.0624	12.1621	42.2596	12.5855	47.2687	12.8497	27.9789	13.6494	13.6475	13.6454	17.8353	18.0589	67.8745	65.4909	36.5044
11/03/23	24.0695	12.1680	42.2992	12.5992	47.3266	12.8672	28.0194	13.6690	13.6671	13.6650	17.8279	18.1398	67.7535	66.2469	36.5816
11/02/23	23.9846	12.1107	41.9749	12.4932	46.8949	12.7417	27.7299	13.5068	13.5048	13.5027	17.8255	18.0142	67.1201	64.6338	36.1882
11/01/23	23.8561	12.0229	41.4708	12.3288	46.2257	12.5475	27.2818	13.2506	13.2486	13.2465	17.8231	17.9043	65.8741	63.1101	35.5299
10/31/23	23.7799	11.9725	41.1936	12.2384	45.8590	12.4415	27.0384	13.1187	13.1167	13.1145	17.8208	17.7327	65.1891	62.7792	35.1280
10/30/23	23.7470	11.9499	41.0624	12.1959	45.6860	12.3913	26.9224	13.0499	13.0479	13.0457	17.8184	17.7504	64.7653	62.1961	35.0590
10/27/23	23.6767	11.9022	40.7887	12.1073	45.3266	12.2875	26.6825	12.9076	12.9057	12.9035	17.8114	17.7871	63.9912	61.7108	34.6764
10/26/23	23.7051	11.9227	40.9141	12.1484	45.4949	12.3366	26.7964	12.9750	12.9730	12.9708	17.8091	17.7837	64.2985	62.3733	34.8083
10/25/23	23.7437	11.9515	41.0995	12.2087	45.7415	12.4081	26.9632	13.0805	13.0785	13.0763	17.8068	17.6691	65.0678	62.3435	35.0284
10/24/23	23.8249	12.0073	41.4205	12.3138	46.1701	12.5327	27.2508	13.2416	13.2397	13.2375	17.8044	17.7990	66.0143	63.6982	35.2261
10/23/23	23.7824	11.9789	41.2620	12.2621	45.9604	12.4719	27.1108	13.1634	13.1614	13.1592	17.8021	17.7386	65.5366	63.1346	35.1227
10/20/23	23.7780	11.9785	41.2779	12.2677	45.9855	12.4797	27.1305	13.1802	13.1782	13.1759	17.7951	17.6679	65.6473	63.6398	35.0579
10/19/23	23.8437	12.0257	41.5685	12.3626	46.3741	12.5928	27.3934	13.3393	13.3373	13.3349	17.7927	17.6115	66.4821	64.4962	35.4434
10/18/23	23.8997	12.0647	41.7980	12.4380	46.6824	12.6827	27.6015	13.4580	13.4560	13.4536	17.7904	17.6844	67.0461	65.4501	35.7061
10/17/23	23.9960	12.1319	42.1949	12.5681	47.2146	12.8377	27.9607	13.6654	13.6633	13.6610	17.7881	17.7666	67.9562	66.9728	36.2550
10/16/23	23.9952	12.1303	42.1764	12.5623	47.1903	12.8305	27.9427	13.6469	13.6450	13.6427	17.7858	17.8913	67.9629	66.3857	36.2326
10/13/23	23.9376	12.0906	41.9418	12.4863	46.8803	12.7406	27.7335	13.5182	13.5163	13.5142	17.7788	17.9787	67.2484	65.2881	36.0398
10/12/23	23.9738	12.1176	42.1158	12.5432	47.1143	12.8089	27.8934	13.6186	13.6167	13.6145	17.7764	17.8928	67.5864	65.9132	36.4147
10/11/23	24.0314	12.1568	42.3390	12.6168	47.4152	12.8967	28.0960	13.7288	13.7269	13.7248	17.7741	18.0472	68.0042	67.2202	36.6489
10/10/23	24.0013	12.1374	42.2353	12.5830	47.2783	12.8572	28.0054	13.6809	13.6789	13.6767	17.7718	17.9647	67.7103	67.1241	36.5341
10/06/23	23.8983	12.0696	41.8627	12.4617	46.7859	12.7145	27.6773	13.4984	13.4964	13.4942	17.7624	17.8067	66.9353	65.9699	35.9926
10/05/23	23.8320	12.0230	41.5830	12.3707	46.4145	12.6067	27.4269	13.3469	13.3450	13.3428	17.7601	17.8728	66.1431	65.1397	35.6269
10/04/23	23.8156	12.0122	41.5233	12.3514	46.3362	12.5841	27.3748	13.3169	13.3149	13.3128	17.7578	17.8660	66.2179	65.2107	35.3220
10/03/23	23.7739	11.9850	41.3772	12.3036	46.1427	12.5280	27.2464	13.2488	13.2469	13.2447	17.7555	17.7489	65.6854	64.8305	35.3023
10/02/23	23.8678	12.0497	41.7526	12.4268	46.6456	12.6745	27.5848	13.4398	13.4379	13.4357	17.7531	17.8913	66.5952	66.1459	35.7699
09/29/23	23.9132	12.0811	41.9348	12.4870	46.8922	12.7466	27.7514	13.5306	13.5287	13.5266	17.7490	18.0170	66.5900	66.9696	36.2968
09/28/23	23.9222	12.0887	41.9835	12.5032	46.9593	12.7662	27.7972	13.5573	13.5555	13.5534	17.7448	18.0275	66.7689	67.0891	36.3359
09/27/23	23.8754	12.0558	41.8011	12.4436	46.7165	12.6957	27.6343	13.4645	13.4626	13.4605	17.7428	17.9792	66.3691	66.4175	36.0820
09/26/23	23.8767	12.0562	41.7998	12.4434	46.7150	12.6951	27.6321	13.4589	13.4570	13.4549	17.7407	18.0485	66.3528	65.8287	36.1784
09/25/23	23.9561	12.1146	42.1388	12.5543	47.1688	12.8272	27.9384	13.6388	13.6370	13.6349	17.7386	18.0669	67.3407	66.6921	36.5989
09/22/23	23.9569	12.1152	42.1402	12.5554	47.1740	12.8289	27.9418	13.6332	13.6315	13.6294	17.7324	18.1937	67.0697	66.4617	36.8195
09/21/23	23.9589	12.1182	42.1666	12.5641	47.2103	12.8396	27.9675	13.6531	13.6513	13.6492	17.7303	18.1264	67.2229	66.5637	36.8311
09/20/23	24.0645	12.1946	42.6033	12.7074	47.7969	13.0106	28.3637	13.8803	13.8786	13.8765	17.7283	18.2480	68.3417	67.9077	37.4073
09/19/23	24.1007	12.2216	42.7627	12.7597	48.0113	13.0731	28.5089	13.9660	13.9642	13.9622	17.7262	18.2577	68.9852	68.4045	37.4531
09/18/23	24.1084	12.2271	42.7928	12.7698	48.0529	13.0854	28.5370	13.9793	13.9776	13.9756	17.7242	18.3122	69.1341	68.6603	37.3810
09/15/23	24.1118	12.2319	42.8329	12.7835	48.1106	13.1027	28.5783	14.0063	14.0045	14.0025	17.7179	18.2850	69.0831	69.0005	37.5561
09/14/23	24.1601	12.2674	43.0384	12.8509	48.3869	13.1832	28.7650	14.1144	14.1127	14.1106	17.7159	18.3282	69.9307	69.7014	37.5711
09/13/23	24.1025	12.2253	42.7935	12.7709	48.0596	13.0879	28.5434	13.9812	13.9794	13.9775	17.7138	18.3581	69.3271	69.0060	37.1691
09/12/23	24.1061	12.2290	42.8208	12.7801	48.0982	13.0995	28.5711	13.9995	13.9978	13.9958	17.7117	18.3330	69.2409	69.5102	37.2703
09/11/23	24.1288	12.2463	42.9262	12.8147	48.2401	13.1408	28.6674	14.0578	14.0560	14.0540	17.7097	18.3183	69.6351	69.6378	37.3818
09/08/23	24.0805	12.2125	42.7361	12.7530	47.9888	13.0680	28.4985	13.9565	13.9548	13.9528	17.7034	18.3450	69.1703	69.3373	37.0328
09/07/23	24.0759	12.2100	42.7269	12.7501	47.9779	13.0650	28.4920	13.9542	13.9525	13.9505	17.7014	18.3241	69.0669	69.3755	37.0887
09/06/23	24.0918	12.2230	42.8103	12.7775	48.0912	13.0982	28.5701	14.0040	14.0022	14.0002	17.6993	18.2763	69.2803	69.8454	37.2047
09/05/23	24.1211	12.2447	42.9376	12.8194	48.2628	13.1482									

12/01/23	24.5204	12.4608	43.8906	13.1162	49.4234	13.4744	29.4173	14.4541	14.4524	14.4504	17.8963	18.6929	71.5592	71.5764	38.4578
07/26/23	24.2258	12.3417	43.6042	13.0453	49.2086	13.4293	29.3454	14.4499	14.4484	14.4465	17.6152	18.6653	70.6948	72.5871	38.9458
07/25/23	24.2163	12.3359	43.5775	13.0365	49.1733	13.4189	29.3220	14.4396	14.4379	14.4361	17.6133	18.6144	70.7047	72.2457	38.9313
07/24/23	24.1974	12.3223	43.4989	13.0110	49.0687	13.3885	29.2512	14.3963	14.3947	14.3929	17.6114	18.6334	70.5044	72.1292	38.7806
07/21/23	24.1841	12.3139	43.4569	12.9977	49.0157	13.3735	29.2167	14.3747	14.3732	14.3714	17.6055	18.6571	70.2201	72.1244	38.8425
07/20/23	24.1808	12.3123	43.4515	12.9961	49.0096	13.3719	29.2133	14.3737	14.3722	14.3704	17.6036	18.6455	70.1974	72.2722	38.8218
07/19/23	24.2266	12.3452	43.6382	13.0578	49.2628	13.4460	29.3849	14.4692	14.4677	14.4659	17.6017	18.7521	70.6685	73.1168	39.0026
07/18/23	24.2119	12.3358	43.5911	13.0423	49.2001	13.4277	29.3433	14.4485	14.4469	14.4451	17.5998	18.6938	70.5015	72.8049	39.0442
07/17/23	24.1639	12.3012	43.3926	12.9773	48.9337	13.3500	29.1627	14.3422	14.3407	14.3389	17.5978	18.6769	70.0036	72.0267	38.7854
07/14/23	24.1430	12.2877	43.3244	12.9552	48.8445	13.3242	29.1032	14.3088	14.3072	14.3055	17.5920	18.6543	69.7345	71.3406	38.8917
07/13/23	24.1672	12.3051	43.4224	12.9878	48.9782	13.3634	29.1941	14.3581	14.3566	14.3548	17.5901	18.7318	69.8035	72.0356	39.0693
07/12/23	24.0841	12.2462	43.0912	12.8792	48.5343	13.2341	28.8948	14.1877	14.1862	14.1844	17.5881	18.6216	69.2107	71.2102	38.4014
07/11/23	24.0007	12.1877	42.7678	12.7731	48.1017	13.1082	28.6041	14.0255	14.0239	14.0220	17.5862	18.4682	68.7006	70.6988	37.6648
07/10/23	23.9468	12.1490	42.5478	12.7011	47.8070	13.0223	28.4048	13.9094	13.9078	13.9059	17.5843	18.4385	68.2399	69.6977	37.3488
07/07/23	23.9111	12.1253	42.4239	12.6607	47.6429	12.9745	28.2947	13.8488	13.8471	13.8453	17.5785	18.3742	68.0764	68.6900	37.2301
07/06/23	23.8994	12.1170	42.3776	12.6455	47.5804	12.9561	28.2516	13.8230	13.8214	13.8195	17.5765	18.3788	68.2614	68.0180	37.0282
07/05/23	23.9789	12.1744	42.7046	12.7531	48.0212	13.0848	28.5500	13.9223	13.9208	13.9189	17.5746	18.5034	68.8013	69.0374	37.6901
07/03/23	24.0133	12.1999	42.8531	12.8023	48.2235	13.1441	28.6876	14.0697	14.0682	14.0664	17.5707	18.5769	68.9285	69.6303	38.0608
06/30/23	24.0039	12.1940	42.8237	12.7931	48.1866	13.1336	28.6631	14.0531	14.0516	14.0499	17.5651	18.6172	68.8445	69.3086	38.0681
06/29/23	23.9309	12.1398	42.5253	12.6955	47.7882	13.0178	28.3951	13.8983	13.8967	13.8950	17.5632	18.5611	68.0076	68.8545	37.6328
06/28/23	23.9226	12.1317	42.4698	12.6777	47.7143	12.9962	28.3435	13.8584	13.8570	13.8553	17.5614	18.7084	67.6969	68.3261	37.6849
06/27/23	23.9113	12.1244	42.4352	12.6663	47.6684	12.9828	28.3129	13.8437	13.8422	13.8405	17.5595	18.6581	67.7208	68.0152	37.6207
06/26/23	23.8484	12.0763	42.1635	12.5775	47.3048	12.8768	28.0665	13.6956	13.6942	13.6925	17.5576	18.6968	66.9539	66.8825	37.3317
06/23/23	23.8527	12.0819	42.2051	12.5914	47.3628	12.8939	28.1066	13.7219	13.7204	13.7187	17.5520	18.6667	67.2540	66.7245	37.3309
06/22/23	23.9115	12.1285	42.4768	12.6805	47.7288	13.0008	28.3561	13.8742	13.8727	13.8709	17.5501	18.6002	67.7731	67.5977	37.9164
06/21/23	23.9200	12.1344	42.5052	12.6902	47.7688	13.0127	28.3834	13.8847	13.8832	13.8816	17.5483	18.6917	67.5163	67.9261	38.1330
06/20/23	23.9352	12.1468	42.5797	12.7147	47.8699	13.0423	28.4525	13.9268	13.9254	13.9237	17.5464	18.6773	67.8681	68.3011	38.0935
06/16/23	23.9715	12.1778	42.7688	12.7772	48.1282	13.1181	28.6298	14.0353	14.0338	14.0321	17.5389	18.6405	68.1900	68.7498	38.5888
06/15/23	23.9901	12.1921	42.8490	12.8037	48.2372	13.1500	28.7039	14.0770	14.0755	14.0738	17.5370	18.6786	68.4399	69.1843	38.6144
06/14/23	23.9152	12.1371	42.5500	12.7058	47.8372	13.0336	28.4346	13.9244	13.9229	13.9211	17.5351	18.5729	67.6052	68.3651	38.2786
06/13/23	23.9017	12.1279	42.5025	12.6904	47.7754	13.0159	28.3942	13.9020	13.9005	13.8988	17.5333	18.5523	67.5346	68.7934	38.0648
06/12/23	23.8557	12.0920	42.2958	12.6230	47.4987	12.9352	28.2060	13.7855	13.7840	13.7823	17.5314	18.6371	67.0671	67.9313	37.7171
06/09/23	23.8042	12.0551	42.0986	12.5588	47.2378	12.8596	28.0313	13.6848	13.6834	13.6817	17.5258	18.6042	66.4473	67.3718	37.5563
06/08/23	23.8068	12.0571	42.1098	12.5628	47.2545	12.8647	28.0431	13.6896	13.6882	13.6865	17.5239	18.6424	66.3693	67.7368	37.5767
06/07/23	23.7621	12.0251	41.9392	12.5071	47.0279	12.7990	27.8920	13.6058	13.6043	13.6026	17.5221	18.5957	65.9539	67.7796	37.2473
06/06/23	23.7891	12.0446	42.0432	12.5412	47.1667	12.8392	27.9840	13.6543	13.6529	13.6512	17.5202	18.6533	66.2041	67.3138	37.5298
06/05/23	23.7545	12.0189	41.9026	12.4951	46.9775	12.7838	27.8552	13.5796	13.5782	13.5765	17.5183	18.6328	66.0472	66.0875	37.3440
06/02/23	23.7645	12.0285	41.9642	12.5157	47.0634	12.8092	27.9149	13.6154	13.6139	13.6123	17.5127	18.6319	66.1783	66.5917	37.4047
06/01/23	23.6786	11.9621	41.5876	12.3927	46.5599	12.6625	27.5735	13.4090	13.4076	13.4060	17.5108	18.7260	65.2265	64.6622	36.9878
05/31/23	23.6035	11.9061	41.2798	12.2922	46.1498	12.5433	27.2976	13.2493	13.2479	13.2463	17.5091	18.6851	64.5790	63.9907	36.4059
05/30/23	23.6459	11.9401	41.4781	12.3570	46.4158	12.6208	27.4783	13.3602	13.3588	13.3572	17.5074	18.6171	64.9619	64.4410	36.8731
05/26/23	23.6452	11.9441	41.5215	12.3715	46.4774	12.6391	27.5228	13.3960	13.3945	13.3928	17.5004	18.4739	64.9565	64.4145	37.1748
05/25/23	23.5720	11.8893	41.2185	12.2726	46.0741	12.5219	27.2514	13.2374	13.2359	13.2342	17.4986	18.4614	64.1156	63.4839	36.8224
05/24/23	23.5598	11.8794	41.1601	12.2540	45.9985	12.5003	27.2012	13.2031	13.2017	13.2000	17.4969	18.5417	63.5573	63.8069	36.9422
05/23/23	23.6193	11.9247	41.4131	12.3369	46.3378	12.5992	27.4304	13.3357	13.3343	13.3326	17.4952	18.5861	64.0250	64.3947	37.4811
05/22/23	23.6833	11.9743	41.6944	12.4289	46.7143	12.7088	27.6849	13.4689	13.4674	13.4658	17.4934	18.5707	64.7504	64.9421	37.9625
05/19/23	23.6679	11.9639	41.6423	12.4121	46.6462	12.6889	27.6388	13.4596	13.4581	13.4565	17.4882	18.5800	64.7332	64.2249	37.9242
05/18/23	23.6677	11.9637	41.6401	12.4117	46.6448	12.6887	27.6382	13.4565	13.4550	13.4534	17.4864	18.6279	64.8255	64.6884	37.7088
05/17/23	23.6378	11.9401	41.5033	12.3673	46.4629	12.6359	27.5150	13.3787	13.3774	13.3758	17.4847	18.7164	64.2081	64.0196	37.7635
05/16/23	23.5823	11.8978	41.2659	12.2898	46.1457	12.5435	27.3002	13.2504	13.2491	13.2476	17.4830	18.7494	63.4417	62.7722	37.6718
05/15/23	23.6303	11.9344	41.4699	12.3567	46.4200	12.6236	27.4861	13.3572	13.3559	13.3544	17.4812	18.7934	63.8457	63.8109	37.9472
05/12/23	23.5954	11.9087	41.3293	12.3111	46.2338	12.5694	27.3602	13.2809	13.2796	13.2781	17.4760	18.8390	63.6485	63.0152	37.6821
05/11/23	23.6092	11.9184	41.3792	12.3277	46.3016	12.5892	27.4055	13.3023	13.3011	13.2996	17.4743	18.9267	63.7353	63.2340	37.7281
05/10/23	23.6228	11.9302	41.4516	12.3515	46.3998	12.6181	27.4731	13.3453	13.3441	13.3426	17.4725	18.8773	63.8312	63.6510	37.8998
05/09/23	23.5987	11.9142	41.3735	12.3259	46.2963	12.5881	27.4049	13.3124	13.3110	13.3095	17.4708	18.7636	63.5443	63.3500	37.9533
05/08/23	23.6204	11.9310	41.4679	12.3569	46.4230	12.6249	27.4902	13.3614	13.3601	13.3586	17.4691	18.7848	63.8320	63.4600	38.0800
05/05/23	23.6164	11.9281	41.4512	12.3519	46.4032	12.6194	27.4768	13.3481	13.3469	13.3454	17.4638	18.8824	63.8020	63.3533	38.0201
05/04/23	23.5210	11.8552	41.0418	12.2183	45.8572	12.4606	27.1082	13.1284	13.1272	13.1258	17.4621	18.9403	62.6413	61.9728	37.5526
05/03/23	23.5570	11.8827	41.1951	12.2686	46.0630	12.5206	27.2472	13.2082	13.2070	13.2056	17.4603	18.9744	63.0898	62.6068	37.6661
05/02/23	23.5625	11.8887	41.2374	12.2823	46.1197	12.5370	27.2861	13.2366	13.2353	13.2339	17.4586	18.8880	63.5325	62.5949	37.5239
05/01/23	23.6132	11.9307	41.4901	12.3649	46.4594	12.6362	27.5183	13.3844	13.3831	13.3815	17.4569	18.7097	64.2768	63.7492	37.8217
04/28/23	23.6310	11.9420	41.5410	12.3819	46.5279	12.6561	27.5628	13.3996	13.3983	13.3968	17.4552	18.8923	64.3024	63.7099	37.9281
04/27/23	23.5845	11.9100	41.3778	12.3288	46.31										

12/01/23	24.5204	12.4608	43.8906	13.1162	49.4234	13.4744	29.4173	14.4541	14.4524	14.4504	17.8963	18.6929	71.5592	71.5764	38.4578
03/16/23	23.2004	11.6402	40.0294	11.8948	44.5636	12.0909	26.2659	12.6662	12.6649	12.6634	17.3729	18.6100	60.9928	63.1967	34.9633
03/15/23	23.1155	11.5725	39.6619	11.7753	44.0763	11.9495	25.9383	12.4698	12.4686	12.4672	17.3710	18.6960	59.9311	62.1709	34.5130
03/14/23	23.1922	11.6366	40.0204	11.8921	44.5543	12.0886	26.2619	12.6686	12.6673	12.6657	17.3690	18.5252	60.3509	63.1766	35.5420
03/13/23	23.1190	11.5776	39.6972	11.7871	44.1259	11.9643	25.9735	12.4932	12.4920	12.4905	17.3671	18.6474	59.3391	62.0892	35.2532
03/10/23	23.1365	11.5962	39.8158	11.8261	44.2881	12.0120	26.0862	12.5686	12.5673	12.5658	17.3611	18.5027	59.4353	62.8310	35.6020
03/09/23	23.1970	11.6489	40.1189	11.9251	44.6952	12.1310	26.3646	12.7456	12.7441	12.7425	17.3592	18.2902	60.3154	64.8671	35.8353
03/08/23	23.2724	11.7106	40.4602	12.0366	45.1521	12.2641	26.6743	12.9319	12.9305	12.9287	17.3572	18.2200	61.4387	66.7860	35.9602
03/07/23	23.2616	11.7025	40.4176	12.0229	45.0964	12.2481	26.6371	12.9092	12.9078	12.9060	17.3553	18.2367	61.3466	66.7696	35.8593
03/06/23	23.3473	11.7706	40.7868	12.1436	45.5895	12.3914	26.9692	13.1033	13.1018	13.1001	17.3533	18.2616	62.2999	67.5438	36.4365
03/03/23	23.3505	11.7750	40.8166	12.1540	45.6338	12.4050	27.0013	13.1211	13.1196	13.1179	17.3474	18.2889	62.2547	68.4112	36.4297
03/02/23	23.2533	11.7014	40.4323	12.0285	45.1236	12.2569	26.6600	12.9295	12.9280	12.9263	17.3454	18.1510	61.2602	67.3757	35.9680
03/01/23	23.2246	11.6785	40.3076	11.9881	44.9587	12.2092	26.5492	12.8614	12.8599	12.8582	17.3435	18.2054	60.7903	67.0574	35.8888
02/28/23	23.2377	11.6875	40.3499	12.0021	45.0152	12.2255	26.5860	12.8765	12.8751	12.8734	17.3418	18.3132	61.0749	67.0764	35.7603
02/27/23	23.2542	11.7014	40.4276	12.0275	45.1192	12.2557	26.6561	12.9184	12.9170	12.9153	17.3401	18.3009	61.2552	67.0634	35.9464
02/24/23	23.2123	11.6707	40.2708	11.9766	44.9128	12.1960	26.5185	12.8401	12.8387	12.8370	17.3349	18.2678	61.0600	66.8523	35.5315
02/23/23	23.2873	11.7288	40.5791	12.0775	45.3242	12.3156	26.7947	12.9962	12.9948	12.9931	17.3332	18.3706	61.7076	67.5626	36.0756
02/22/23	23.2589	11.7080	40.4735	12.0431	45.1845	12.2751	26.7017	12.9455	12.9441	12.9424	17.3315	18.3092	61.3759	67.2404	36.0234
02/21/23	23.2675	11.7161	40.5222	12.0590	45.2497	12.2940	26.7459	12.9741	12.9727	12.9710	17.3298	18.2692	61.4713	66.9527	36.2348
02/17/23	23.3684	11.7959	40.9522	12.2004	45.8283	12.4629	27.1368	13.1949	13.1935	13.1919	17.3228	18.4325	62.7279	68.8575	36.5235
02/16/23	23.3733	11.8011	40.9860	12.2115	45.8747	12.4765	27.1691	13.2166	13.2152	13.2135	17.3211	18.3932	62.8906	69.1651	36.4957
02/15/23	23.4304	11.8458	41.2257	12.2901	46.1957	12.5700	27.3853	13.3399	13.3385	13.3369	17.3194	18.4625	63.7643	69.9996	36.5624
02/14/23	23.4212	11.8382	41.1836	12.2763	46.1386	12.5530	27.3454	13.3141	13.3127	13.3111	17.3177	18.5002	63.5717	68.9504	36.7447
02/13/23	23.4188	11.8357	41.1668	12.2709	46.1162	12.5465	27.3294	13.3007	13.2993	13.2978	17.3160	18.5665	63.5815	68.6076	36.7024
02/10/23	23.3500	11.7839	40.8954	12.1825	45.7565	12.4421	27.0883	13.1621	13.1608	13.1592	17.3108	18.5202	62.8525	67.8085	36.3856
02/09/23	23.3619	11.7926	40.9393	12.1972	45.8165	12.4597	27.1288	13.1812	13.1799	13.1783	17.3091	18.6010	62.7026	67.9793	36.6237
02/08/23	23.3944	11.8179	41.0745	12.2417	45.9987	12.5130	27.2521	13.2497	13.2484	13.2469	17.3074	18.6710	63.2515	68.9518	36.5007
02/07/23	23.4406	11.8558	41.2848	12.3105	46.2809	12.5952	27.4434	13.3646	13.3633	13.3618	17.3057	18.6361	63.9582	69.7996	36.6418
02/06/23	23.3800	11.8078	41.0241	12.2255	45.9332	12.4942	27.2088	13.2248	13.2235	13.2220	17.3040	18.6657	63.1439	69.0927	36.3636
02/03/23	23.4339	11.8505	41.2549	12.3017	46.2456	12.5856	27.4205	13.3425	13.3413	13.3398	17.2988	18.7903	63.5291	69.9542	36.7896
02/02/23	23.5046	11.9047	41.5410	12.3956	46.6293	12.6974	27.6787	13.4855	13.4843	13.4829	17.2971	18.9411	64.1910	70.8659	37.1723
02/01/23	23.4386	11.8531	41.2639	12.3051	46.2591	12.5896	27.4288	13.3394	13.3382	13.3368	17.2954	18.9280	63.2578	69.4009	37.1139
01/31/23	23.3661	11.7985	40.9794	12.2120	45.8799	12.4792	27.1741	13.1978	13.1966	13.1952	17.2935	18.7991	62.6030	68.1902	36.8039
01/30/23	23.2898	11.7399	40.6679	12.1100	45.4636	12.3580	26.8934	13.0371	13.0358	13.0344	17.2917	18.7300	61.6984	66.6023	36.6336
01/27/23	23.3499	11.7887	40.9362	12.1983	45.8251	12.4635	27.1382	13.1782	13.1770	13.1756	17.2859	18.7842	62.5031	67.6445	36.8512
01/26/23	23.3385	11.7801	40.8907	12.1835	45.7646	12.4458	27.0971	13.1536	13.1524	13.1510	17.2841	18.7937	62.3466	67.0875	36.9121
01/25/23	23.2968	11.7470	40.7113	12.1251	45.5262	12.3766	26.9364	13.0569	13.0557	13.0543	17.2822	18.8362	61.6635	66.3900	36.8717
01/24/23	23.2827	11.7370	40.6614	12.1088	45.4604	12.3575	26.8926	13.0331	13.0319	13.0305	17.2803	18.8066	61.6741	66.2775	36.6958
01/23/23	23.2773	11.7350	40.6588	12.1080	45.4586	12.3572	26.8930	13.0386	13.0373	13.0359	17.2784	18.7239	61.7172	66.6060	36.6308
01/20/23	23.2211	11.6919	40.4304	12.0339	45.1569	12.2697	26.6904	12.9181	12.9169	12.9155	17.2727	18.7669	60.9921	65.5491	36.5188
01/19/23	23.1352	11.6232	40.0561	11.9120	44.6589	12.1250	26.3545	12.7166	12.7155	12.7141	17.2709	18.5441	59.8582	64.1668	36.1722
01/18/23	23.1775	11.6567	40.2363	11.9711	44.9004	12.1955	26.5176	12.8098	12.8086	12.8073	17.2690	18.8993	60.3111	64.9470	36.3616
01/17/23	23.2219	11.6956	40.4619	12.0446	45.2024	12.2833	26.7232	12.9414	12.9402	12.9388	17.2671	18.7182	61.2654	65.8848	36.4033
01/13/23	23.2152	11.6926	40.4536	12.0424	45.1947	12.2814	26.7190	12.9383	12.9371	12.9357	17.2595	18.7406	61.3899	65.8056	36.2888
01/12/23	23.1890	11.6716	40.3378	12.0048	45.0412	12.2368	26.6152	12.8740	12.8728	12.8714	17.2576	18.8029	61.1434	65.4094	36.0676
01/11/23	23.1289	11.6271	40.1102	11.9304	44.7386	12.1488	26.4127	12.7638	12.7626	12.7612	17.2557	18.6666	60.9279	64.5760	35.5535
01/10/23	23.0574	11.5733	39.8310	11.8393	44.3685	12.0414	26.1654	12.6261	12.6249	12.6234	17.2539	18.5559	60.1532	63.5930	35.3280
01/09/23	23.0314	11.5521	39.7134	11.8012	44.2125	11.9961	26.0597	12.5600	12.5588	12.5574	17.2520	18.6338	59.7362	62.8115	35.3242
01/06/23	23.0043	11.5339	39.6266	11.7731	44.0996	11.9635	25.9853	12.5205	12.5193	12.5178	17.2463	18.5763	59.7718	62.5154	35.0441
01/05/23	22.8607	11.4252	39.0603	11.5886	43.3501	11.7463	25.4852	12.2407	12.2395	12.2379	17.2444	18.3808	58.4370	61.2283	34.2187
01/04/23	22.9224	11.4740	39.3225	11.6741	43.6986	11.8475	25.7190	12.3760	12.3747	12.3732	17.2425	18.3977	59.1156	62.0623	34.5438
01/03/23	22.8557	11.4238	39.0628	11.5894	43.3547	11.7477	25.4893	12.2479	12.2466	12.2450	17.2407	18.3031	58.6704	61.1436	34.1009
12/30/22	22.8507	11.4237	39.0754	11.5938	43.3747	11.7539	25.5049	12.2631	12.2618	12.2602	17.2352	18.2074	58.9043	61.5305	33.9422
12/29/22	22.8745	11.4430	39.1746	11.6264	43.5073	11.7924	25.5935	12.3106	12.3092	12.3077	17.2316	18.2819	59.0510	61.6545	34.1698
12/28/22	22.7722	11.3613	38.7567	11.4903	42.9538	11.6319	25.2230	12.0991	12.0978	12.0962	17.2299	18.2129	58.0309	60.1184	33.6813
12/27/22	22.8340	11.4119	39.0189	11.5759	43.3022	11.7330	25.4567	12.2332	12.2319	12.2303	17.2281	18.2486	58.7373	60.9983	33.9634
12/23/22	22.8496	11.4254	39.0902	11.5997	43.4003	11.7618	25.5229	12.2659	12.2646	12.2631	17.2208	18.3588	58.9717	61.3898	33.9379
12/22/22	22.8277	11.4070	38.9924	11.5681	43.2714	11.7246	25.4364	12.2119	12.2107	12.2092	17.2191	18.4230	58.6264	61.1795	33.8405
12/21/22	22.8965	11.4635	39.2864	11.6639	43.6616	11.8377	25.6979	12.3631	12.3618	12.3603	17.2174	18.4397	59.4866	62.0709	34.1285
12/20/22	22.8182	11.4009	38.9658	11.5597	43.2379	11.7150	25.4147	12.2007	12.1995	12.1980	17.2157	18.4059	58.6079	61.0676	33.7920
12/19/22	22.8070	11.3901	38.9039	11.5397	43.1558	11.6911	25.3584	12.1612	12.1601	12.1586	17.2139	18.5246	58.5453	60.7610	33.5960
12/16/22	22.8518	11.4269	39.0949	11.6025	43.4125	11.7660	25.5313	12.2560	12.2548	12.2535	17.2085	18.6354	59.0738	61.7387	33.6905
12/15/22	22.9092	11.4738	39.3393	11.6824	43.73										

Russell 2000 (^RUT) Raw Data						
Date	Open	High	Low	Close	Adj Close*	Volume
12/01/23	1,806.13	1,863.66	1,800.81	1,862.64	1,862.64	4,397,120,000
11/30/23	1,808.62	1,816.53	1,805.22	1,809.02	1,809.02	5,399,300,000
11/29/23	1,804.23	1,827.06	1,801.91	1,803.81	1,803.81	4,418,760,000
11/28/23	1,799.71	1,804.11	1,789.20	1,792.81	1,792.81	3,586,240,000
11/27/23	1,801.03	1,804.50	1,790.95	1,801.15	1,801.15	3,403,990,000

Gain/Loss =				61.49		
--------------------	--	--	--	--------------	--	--

Russell 2000 (^RUT) Raw Data						
Date	Open	High	Low	Close	Adj Close*	Volume
Gain/Loss =				0.00		

Volatility S&P 500 (^VIX)						
Date	Open	High	Low	Close	Adj Close*	Volume
12/01/23	12.94	12.96	12.48	12.63	12.63	-
11/30/23	13.07	13.39	12.82	12.92	12.92	-
11/29/23	12.71	13.10	12.48	12.98	12.98	-
11/28/23	12.78	14.30	12.56	12.69	12.69	-
11/27/23	13.14	13.28	12.64	12.69	12.69	-

Gain/Loss =				-0.06		
--------------------	--	--	--	--------------	--	--

Volatility S&P 500 (^VIX)						
Date	Open	High	Low	Close	Adj Close*	Volume
Gain/Loss =				0.00		

Precious Metals Raw Data							
London Fix Prices							
Date	Gold AM	Gold PM	Silver Noon	Platinum AM	Platinum PM	Palladium AM	Palladium PM
2023-12-01	2,044.55	2,045.40	25.16	937	929	1,015	1,009
2023-11-30	2,037.85	2,035.45	25.02	931	937	1,014	1,025
2023-11-29	2,037.60	2,046.95	24.97	938	932	1,047	1,024
2023-11-28	2,014.00	2,025.65	24.65	924	928	1,067	1,059
2023-11-27	2,011.70	2,013.70	24.76	936	924	1,072	1,064
Gain/Loss =		31.70	0.41		5		-55
Gold to Silver Ratio (End of Week) =				81.30			

Precious Metals Raw Data							
	Gold	Gold	Silver	Platinum	Platinum	Palladium	Palladium
Gain/Loss =		0.00	0.00		0		0
Gold to Silver Ratio (End of Week) =				#DIV/0!			